



ANIMAL HEALTH

# Midmark Mobile Dental Delivery System

# Redesigned for greater efficiency at the point-of-care

Oral health care is important for your patients—and your practice. The next generation Midmark Mobile Dental Delivery System helps improve the way you work by streamlining your dental workflow.

## WHAT'S INCLUDED

- High-Speed LED Handpiece (swivel available)
- Low-Speed Handpiece
- LED Piezo Scaler
- Three-way Air-Water Syringe
- Bur Block
- Sample Pack of Burs
- Handpiece Conditioning Spray
- Disposable Prophylaxis Angles
- Quick-Connect/Disconnect Water Bottles
- VistaTab™ Dental Waterline Cleaner Tablets (US only)
- Scaler Accessories
  - Autoclavable Storage Box
  - Scaler Tip Wear Guide
  - Tips (1S, 2, 10P)
  - Tip Wrenches



Proudly made in the USA.

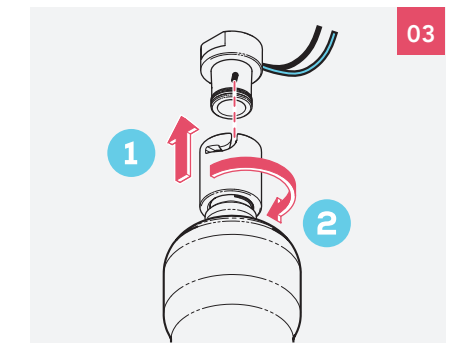
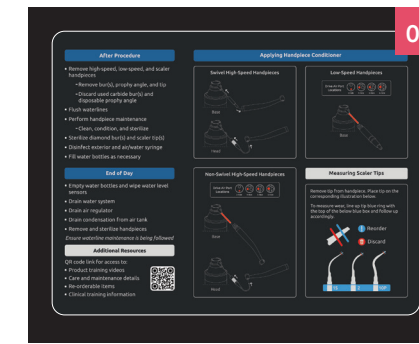


## SYSTEM HIGHLIGHTS

- Compact Design**
- Convenient Storage**
- Large Work Surface**
- Integrated Handles**
- User-friendly Controls**
- Cord Management**

- Smooth Handpiece Tubing**
- LED Water Level Indicator**
- Quick-Connect/Disconnect Water Bottle System**
- Easy Access Points for Serviceability**
- Onboard Maintenance Checklist**

- High-Speed LED Handpiece and LED Scaler Standard**
- Optional Dual High-Speed Handpieces**
- Optional Integrated Suction**



## WORKFLOW EFFICIENCY

- Control all handpieces with one integrated foot pedal. Handpieces are automatically activated when lifted from the holder.
- Illuminate hard-to-see spaces in the oral cavity with a high-speed LED handpiece and scaler.
- 01** Adjust system settings with a user-friendly control panel featuring LED water level indicator and graphics that align with handpiece positions.
- 02** Ensure staff is familiar with necessary system care by using the onboard maintenance checklist.
- 03** Access water bottles on the back of the unit and remove/replace with the quick-connect/disconnect mechanism.
- 04** Add an optional suction accessory that integrates onto the handpiece bar for better accessibility.


## FLEXIBILITY + SAFETY

- Reduce hand and wrist fatigue with swivel handpieces designed to support proper ergonomics.
- Enhance infection control with a fully-enclosed design that can be easily disinfected.
- Enjoy quieter operation. Enclosed system with oil-less compressor is quieter than other systems.
- 05** Store the unit under standard-height countertops to maximize floor space when not in use.
- 06** Reduce trip hazards with foot pedal and power cord storage and handpiece tubing lengths that avoid interference.
- 07** Integrated front and rear handles enhance push/pull maneuverability.
- 08** Keep supplies close with a large tray surface and storage drawer.
- 09** Utilize improved access points for adjustments and serviceability.





## MIDMARK MOBILE DENTAL DELIVERY SYSTEM SPECIFICATIONS

<b>Overall Dimensions</b> (D x W x H)	18.6" x 17.4" x 33.8" (47.24 cm x 44.19 cm x 85.85 cm)
<b>Compressor</b>	Oil-free 1/2 hp motor Working pressure: 70-100 psi Flow rate: 2.2 CFM at 70 psi Operational sound level: ≤12.01 sones Air reservoir: 1 gallon
<b>Water Module</b>	Two 1-liter reservoirs (toggled) Pressurized system: 30-40 psi
	
<b>Complies with IEC 60601-1</b>	

## MIDMARK ACADEMY DENTISTRY TRAINING

Our RACE-approved courses are delivered in your hospital by Boarded Veterinary Dentists and Veterinary Technician Specialists in Dentistry and will teach you how to achieve the highest level of dentistry excellence to grow your practice and improve the health of your patients.

<b>VI-CPC</b>	Cleaning, Probing and Charting Best Practices Lab (4 Hours)
<b>VI-CPC-ADD</b>	Add-on Regional Nerve Block Training (2 Hours)
<b>VI-RAD</b>	Dental Radiography Positioning Training (4 Hours)
<b>VI-RAD-ADD</b>	Add-on Regional Nerve Block Training (2 hours)
<b>VI-RADCP</b>	Level 1 Technician Dentistry Training (Full Day)

**Clinical dentistry labs for the DVM are offered in-hospital and regionally. Contact [midmark-academy@midmark.com](mailto:midmark-academy@midmark.com) for more information.**

## BEST-PRACTICE SUPPORT

- Enjoy peace of mind with a market-leading warranty: 5-year limited parts and 2-year service. (Excludes handpieces)
- Access 40+ hours of RACE-approved training to support your team and improve confidence in dentistry.
- Leverage clinical and technical support through 1.800.MIDMARK.

## MIDMARK MOBILE DENTAL DELIVERY SYSTEMS

<b>AH9000-001</b>	4-Position with High-Speed LED Handpiece, Low-Speed Handpiece, LED Piezo Scaler and 3-Way Air-Water Syringe
<b>AH9000-002</b>	4-Position with High-Speed LED Swivel Handpiece, Low-Speed Handpiece, LED Piezo Scaler and 3-Way Air-Water Syringe
<b>AH9000-003</b>	5-Position with Dual High-Speed LED Swivel Handpieces, Low-Speed Handpiece, LED Piezo Scaler and 3-Way Air-Water Syringe
<b>AH9000-005</b>	4-Position with High-Speed LED Handpiece, Low-Speed Handpiece, LED Piezo Scaler and 3-Way Air-Water Syringe, CANADA
<b>9A697001</b>	Dental Suction Accessory (In-clinic installation required)



For a complete listing of Midmark Academy Dentistry and Anesthesia courses, visit [midmarkacademy.com](http://midmarkacademy.com).



Additional dental delivery accessories are available at [midmarkserviceparts.com](http://midmarkserviceparts.com).

VistaTab and TÜVRheinland are not a trademark of Midmark Corporation and are the sole property of respective owners.

Midmark is an ISO 13485 and ISO 9001 Certified Company. Certain products are not included. See the complete list at: [midmark.com/ISO](http://midmark.com/ISO)

For more information, contact your Midmark dealer or call: 1.800.MIDMARK. Outside the USA call: 1.937.526.3662 or visit our website: [midmark.com](http://midmark.com)

© 2024 Midmark Corporation, Versailles, Ohio USA. Products subject to improvement changes without notice. Litho in USA.

007-10160-00 Rev B1 (1/24)

