



ANIMAL HEALTH

# Digital Dental Radiography



# How do you treat disease you can't see?



Since 60% of a tooth is below the gumline, problems such as retained roots, root fractures and periodontal disease only can be detected on radiographs.<sup>1</sup>

## DON'T LET PATIENTS LEAVE YOUR CLINIC WITH UNDIAGNOSED DISEASE

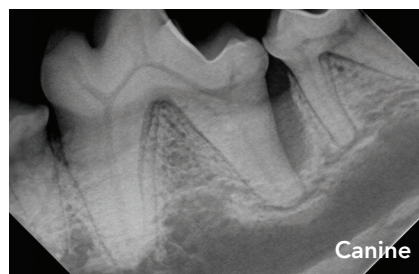
Only through the use of dental radiographs can you effectively diagnose dental disease that, left untreated, could result in pain, tooth loss and systemic diseases affecting the heart, liver and kidneys.

Without X-rays, many dental problems go undiagnosed and untreated.<sup>1</sup> Utilizing Midmark X-ray generators, digital sensors and imaging software can help support better diagnostic outcomes and improve patient care.



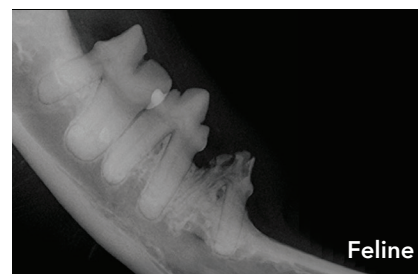
Canine

Teeth appear normal and healthy.



Canine

X-ray shows underlying pathology.



Feline

Type 3 Tooth Resorption.

## Enhance your clinic's efficiency + diagnostic capability.



## MIDMARK DC GENERATOR

The Midmark DC uses simple icons and a large, easy-to-read display for ease of use. You can select the mA, kV and time settings of your choice or choose the convenient pre-programmed technique settings. The positioning arm is constructed with high-tolerance, frictionless joints and a heavy duty dual-braking system designed for precise and stable placement. The unique tube head handle is designed to let you position the X-ray source where you want it, with just one hand.

- Intuitive, with user-friendly, veterinary-specific software and control panel.
- DC technology allows you to adjust kV (60, 65 and 70) and mA (4, 5, 6 and 7).
- The Midmark DC 0.4 mm focal spot is designed to produce visibly higher resolution.
- Flexible system with settings you can customize to suit your practice.
- Sensor holder for arm available with Midmark sensor.
- 56", 66", 76" or 82" arm lengths and versatile mobile system.
- Straightforward installation—simply connect the USB cable to your PC, use the quick calibration flash drive to prepare your sensor, and the system is ready.
- Before, during and after sale support.



Proudly made in the USA.

<sup>1</sup> See back page for source.

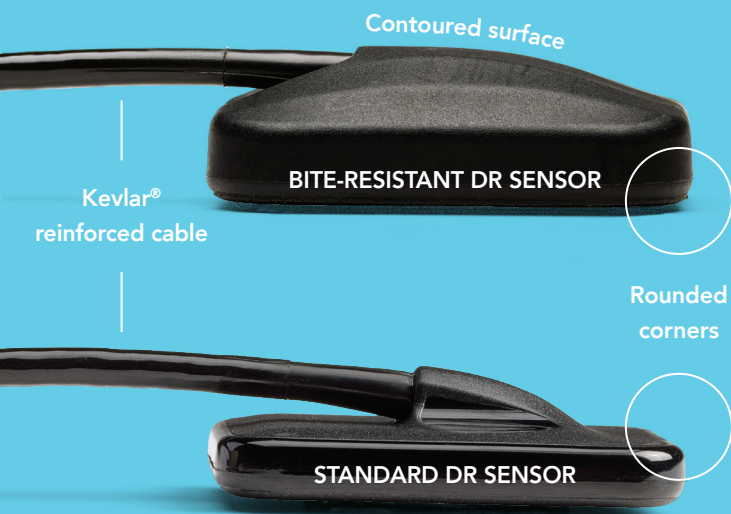


# Discover the uniquely designed veterinary specific, bite-resistant sensor.



## DENTAL RADIOGRAPHY (DR) SENSORS

The Midmark Bite-Resistant DR Sensor is designed for the unique needs of the animal health market. It combines a patent-pending geometric sensor housing design and exceptional image quality to provide clear, crisp radiographs with unmatched resistance to bite damage—**FOUR TIMES stronger** than our standard DR sensor.



## RELIABILITY + DURABILITY

- Eliminates stopping points where damage often occurs, distributing biting force and allowing the tooth to slide off the sensor.
- Imparts a protective plate between the housing and imaging components, further enhancing durability.
- Uses Kevlar®-reinforced cable for reliability and a water-tight connection to promote asepsis.

## IMAGE CLARITY

- Provides exceptional high-quality images, even when using low-dose radiation.
- Enhances signal-to-noise performance prior to post processing for improved image quality.

- Offers superior image resolution with more pixels per area (pixel size 14 μm).

## PEACE OF MIND

- Includes clinical and technical support and the Midmark five-year limited warranty, with first-time replacement at no charge.
- Includes imaging software with practice management integration capabilities.

## SENSOR RECOMMENDATION BY PATIENT SIZE:

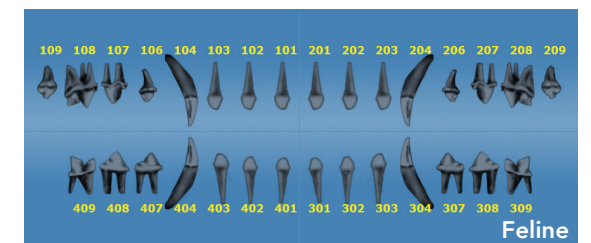
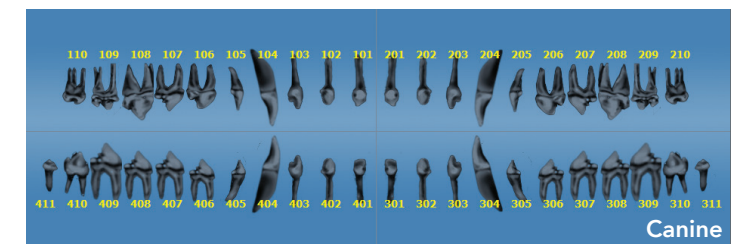
- Canine and Feline: Bite-Resistant DR Sensor
- Feline, Toy Breed and Exotics: Standard DR Sensor

## Simplify image capture with Midmark Imaging Software.



## DENTAL RADIOGRAPHY SOFTWARE

Acquire, enhance and store images with ease. The Midmark DR System imaging software is user-friendly with a familiar look and formatting. Our software is DICOM compliant, includes practice management and PACS server integration capabilities, and features canine and feline tooth templates that are organized using the triadan numbering system.



- High quality images
- Powerful, no-hassle software
- Intuitive and logical interface
- Simplified image acquisition
- Data backup and restore functions
- DICOM-formatted images
- 22 image enhancing tools
- Customizable templates
- Practice management integration capabilities
- Email option from work surface
- Store digital dental images



Produce exceptional digital images with the our integrated veterinary dental radiography digital sensor system.



### MIDMARK COMPLETE DIGITAL DENTAL RADIOGRAPHY SYSTEMS

Improve clinic efficiency with a combined Midmark DC generator and Midmark Bite-Resistant or standard DR sensor. The sensor plugs directly into the X-ray through the integrated USB and stores directly on the arm to help prevent it from being damaged or misplaced. Complete systems are available in multiple wall-mount arm lengths and a mobile configuration, including an optional laptop package.



Better care doesn't happen by chance.  
**It happens by design.**



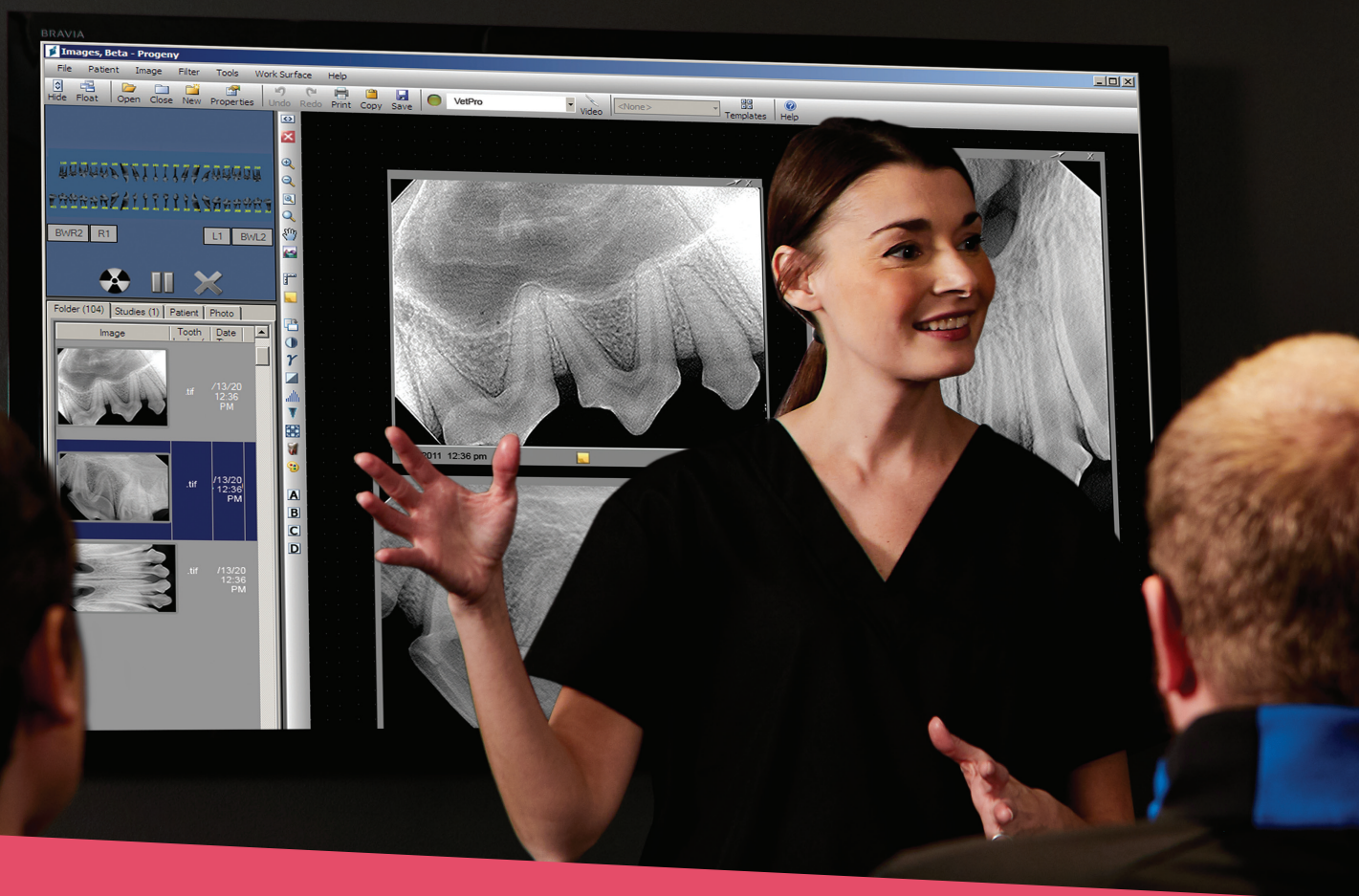
Invest in  
dental radiology  
to help ensure  
healthier patients.  
**Midmark imaging  
systems reveal  
dental disease you  
cannot see.**





# Get industry-leading training + support.

A thoroughly trained team can turn your dental suite into a highly efficient patient treatment center.



Learn how to lead your practice to lasting success and dentistry excellence through the CE training program we've developed after years of research and collaboration with industry experts.

To help ensure your success, Midmark Academy<sup>SM</sup> offers comprehensive, hands-on, half-day, digital, Dental Radiography and

Positioning Training. The program is provided in your clinic by a member of our nationwide training and education network. The AAVSB has approved Midmark courses to provide RACE<sup>®</sup> credits for both technicians and veterinarians.



Call **1.844.856.1236** or visit **midmark.com** for full course details.

## MIDMARK BR/DR SENSOR SPECIFICATIONS

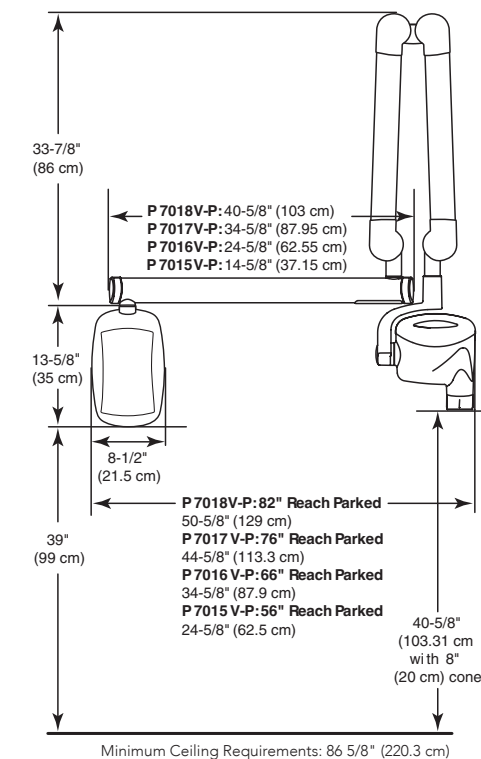
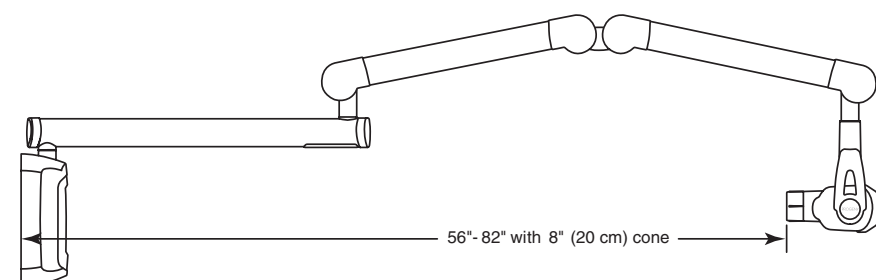
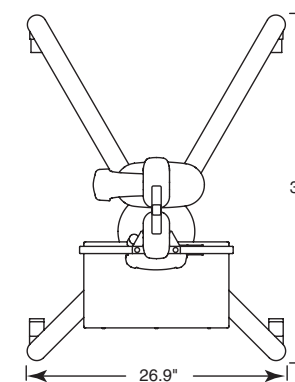
- Size:** Size 2 only
- Dimensions:**  
BR: 43.7 mm x 31.3 mm x 13.5 mm  
DR: 32 mm x 43 mm x 5.5 mm
- Active Area:** 36 mm x 26 mm
- Number of Pixels:**  
2,574 lines x 1,852 pixels
- Pixel Size:** 14 µm x 14 µm
- Theoretical Resolution:**  
35.7 lp/mm
- Levels of Grey:** 4096
- Saturation Level:** 532 µGy
- Dynamic Range:** 72 dB
- Signal-Noise Ratio:** 89 dB
- Sensor Cable Length:**  
Standalone: 3 m, Integrated: 1.1 m
- Connection Type:**  
USB 2.0, High Speed
- Transfer Speed:** 3 seconds
- Power Supply:** +5 V, per USB 2.0 specification
- Level of Protection:**  
IP68 (sensor only, per IEC 60529)
- Warranty:**  
Bite-Resistant DR Sensor:  
5 years, free first replacement  
DR Sensor (standard): 5 years, discounted first replacement

## MIDMARK DC GENERATOR SPECIFICATIONS

- Line Voltage:** 110-230 VAC +/- 10% 50-60 Hz
- Line Load:** Maximum current amps
- Tube Potential:** 60, 65 or 70 kV
- Tube Current:** 4, 5, 6 or 7 mA
- Exposure Time:** 20 ms to 2 seconds
- Cone Length:** 20 cm (8 inches)
- Minimum Inherent Filtration:**  
2 mm Al equivalent at 70 kV
- Focal Spot:** 0.4 mm (IEC 336)
- Duty Factor:** 1:15
- Remote exposure hand switch included
- Shipping Weight:**  
Wall Mount: 943 kg (95 lb)  
Mobile: 149 kg (330 lb)
- Applicable Documents Federal Regulations:** 21 CFR, UL, IEC, TGA 2002
- Warranty:** 2 years, limited
- Options:** choice of 56", 66", 76" or 82" (total reach); double stud mounting plate

## MIDMARK IMAGING SOFTWARE (VETERINARY)

- Computer Workstation Requirements**
- Operating System:**  
Microsoft<sup>®</sup> Windows<sup>®</sup> 10/11 Professional or Enterprise
- Processor:** Intel Core i3/i5 performing at a minimum
- Memory:** 16 GB RAM or greater (8 GB RAM at a minimum)
- Video:** 32 bit, 1920 x 1080 resolution capable (32 bit, 1024 x 768 minimum)
- Display:** 1920 x 1080 (1024 x 768 minimum), 32 true bit color
- Ports:** High-speed USB 3.0 (2.0 minimum)
- Communication:** 1 x Ethernet 10/100 and 1 x Wi-Fi 802.11 g/n
- Weight:** 10 lb maximum
- Safety Compliance:** UL 62368-1 and CSA C22.2 No. 62368-1
- Imaging Software System Requirements:** Please visit [midmark.com](http://midmark.com) or contact Midmark Imaging Technical Support at 1.844.856.1232 and press 3







Designing better care.®

Sources:

1 aaha.org, <https://www.aaha.org/your-pet/pet-owner-education/ask-aaha/Anesthesia-and-Dental-Cleaning/>

Authorized CE Representative Countries in the EEC should direct all questions, incidents and complaints to the Midmark Authorized CE representative listed below:

CE Partner 4U, Esdoornlaan 13, 3951 DB Maarn, Netherlands, [www.cepartner4u.eu](http://www.cepartner4u.eu)

Midmark is an ISO 13485 and ISO 9001 Certified Company. Certain products are not included. See the complete list at: [midmark.com/ISO](http://midmark.com/ISO)

AVImark, DICOM, Dual Core, Intel, Kevlar, PACS, RACE, Single Core, Triadan System, Windows, are all trademarks or registered trademarks of their respective companies.

For more information, contact your Midmark dealer or call: 1.800.MIDMARK  
Outside the USA call: 1.937.526.3662 or visit our website: [midmark.com](http://midmark.com)

© 2024 Midmark Corporation, Versailles, Ohio USA  
Products subject to improvement changes without notice. Litho in USA.

007-0899-00 Rev 11 (1/24)

