

## FLAWLESS IMAGING AND ENHANCED WORKFLOW

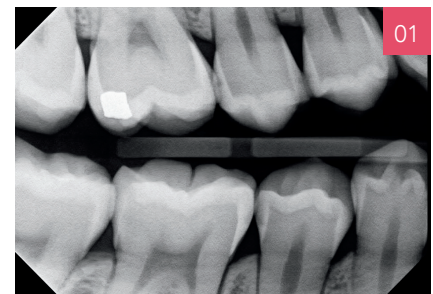
Preva packs many powerful features into one attractive, reliable system.

Detect dental caries and other problem areas with the razor-sharp images achieved through Midmark Preva Intraoral X-Ray systems. Preva systems are easy to operate and provide effortless movement for efficient workflows with one-handed, drift-free positioning. Designed to capture the images needed in just one shot, Preva units can help minimize patient stress.

Preva X-ray systems use a high-frequency direct current (DC) method of image capture in a range of models—Preva DC, Preva 2.0 and Preva Plus—and mounting options for your practice needs. The Preva 2.0 includes a high-speed USB connector for your digital sensors. The Preva Plus is integrated directly with our Midmark Intraoral Digital Sensor System and includes built-in sensor storage for convenience and sensor protection.

### Use the Preva Intraoral X-Ray System to:

- Identify cavities and visualize tooth roots
- Examine the status of developing teeth
- Monitor the overall health of the bony area surrounding the tooth



## FEATURES

- The Preva system is designed for effortless movement and fast one-handed positioning.
- Auto-calibration between every capture ensures consistent image quality.
- The proprietary dual-arm braking system helps the head stay exactly where you position it without sagging or drifting.
- Preva provides a 0.4 mm focal spot for sharp, well-defined details that allow easy identification of pathology with both film and digital sensors.
- The easy-to-use LCD control panel with large icons helps to identify target tooth, receptor type and patient size while offering pre-programmed technique settings.
- All Preva models are available in multiple mounting configurations to best suit your operatory needs: wall, cabinet or mobile.
- The Preva Plus is configured with the additional integration of the Midmark Intraoral Digital Sensor System and built-in storage to help keep sensors from being damaged or misplaced.
- Preva units are designed and packaged for fast and easy installation.

### Additional Features:

- 01** For consistently superior diagnostic images, selectable options allow you to determine the techniques you prefer to control according to clinical or procedural needs.
  - kV: 60, 65 and 70
  - mA: 4, 5, 6 and 7
  - Time: 0.02 seconds to 2 seconds
- 02** Grow with the Preva 2.0 that gives you a high-speed USB connector so you can go digital when your practice is ready.

## X-RAY SPECIFICATIONS

Line voltage	110 V to 230 V, ± 10 %, 50 Hz or 60 Hz
Tube potential	60 kV, 65 kV or 70 kV
Tube current	4 mA, 5 mA, 6 mA or 7 mA
Exposure time	0.02 s to 2 s
Cone length	8" (20 cm)
Focal spot	0.4 mm (IEC 60336)
Duty factor	1:15
Shipping weight (wall mount)	43 kg (95 lb)
Applicable documents Federal regulations:	21 CFR, UL, IEC, TGA 2002
Warranty	2-year, limited
Options	<b>Exposure Hand Switch</b> <b>Cone Length:</b> 8" (20 cm) or 12" (30 cm) <b>Rounded Cone Opening:</b> 2.3" (60 mm) <b>Rectangular Cone Opening:</b> 1.7" x 1.3" (45 mm x 35 mm), 1.5" x 1.1" (40 mm x 30 mm), or 1.1" x 0.7" (30 mm x 20 mm) <b>Total Reach:</b> 56", 66", 76", or 82" <b>Mounting Plate:</b> single stud, two stud, or metal stud
Minimum ceiling height	86.5" (220 cm)
Cabinet passthrough (alternate)	<b>Option 1:</b> 66" Arm: 26.75" (W) x 47.5" (D) (68 cm x 121 cm) <b>Option 2:</b> 76" Arm: 36.75" (W) x 47.5" (D) (93.5 cm x 121 cm)
Mobile	Base: 26.9" (W) x 36" (L) (68.3 cm x 91.4 cm) Arm reach: 56" (142 cm) Height: 76.9" (195.3 cm)

## SENSOR SPECIFICATIONS

Film size equivalent	Size 1	Size 2
Dimensions	0.9" x 1" x 0.2" (24 mm x 27 mm x 5.5 mm)	1.3" x 1.7" x 0.2" (32 mm x 43 mm x 5.5 mm)
Active area	1.2" x 0.8" (30 mm x 20 mm)	1.4" x 1" (36 mm x 26 mm)
Sensor cable	3.61 ft (1.1 m) or 9.84 ft (3 m)	3.61 ft (1.1 m) or 9.84 ft (3 m)
Computer interface	High-speed USB 2.0	
Computer requirements	Visit <a href="http://midmark.com">midmark.com</a> for operating system and hardware requirements.	

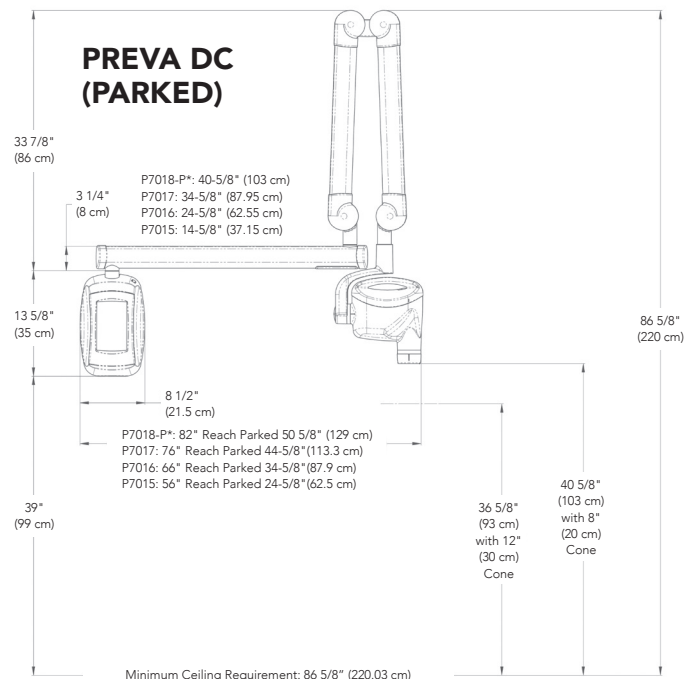
Specifications are subject to change without notice.

## SENSOR PART NUMBERS

<b>XSD5-05</b>	Midmark Intraoral Digital Sensor System, Size 1 Sensor
<b>XSD5-06</b>	Midmark Intraoral Digital Sensor System, Size 2 Sensor

## X-RAY PART NUMBERS

Reach	Preva DC	Preva 2.0	Preva Plus (with size 1 or size 2 sensor)
<b>Single Stud Mount</b>			
76"	PE7017 (white) P7017 (grey)	_____	_____
66"	PE7016 (white) P7016 (grey)	_____	_____
56"	PE7015 (white) P7015 (grey)	_____	_____
<b>Double Stud Mount</b>			
82"	PE7018-P (white) P7018-P (grey)	DCD8-W2Z/H	DCD8-W2Z/H/S1 DCD8-W2Z/H/S2
76"	PE7017-P (white) P7017-P (grey)	DCD7-W2Z/H	DCD7-W2Z/H/S1 DCD7-W2Z/H/S2
66"	PE7016-P (white) P7016-P (grey)	DCD6-W2Z/H	DCD6-W2Z/H/S1 DCD6-W2Z/H/S2
56"	PE7015-P (white) P7015-P (grey)	DCD5-W2Z/H	DCD5-W2Z/H/S1 DCD5-W2Z/H/S2
<b>Mobile</b>			
Mobile	PE7017M (white) P7017GM (grey)	DCDM-W0Z/H	DCDM-W0Z/H/S1 DCDM-W0Z/H/S2



For more information, contact your Midmark dealer or call 1.800.MIDMARK. Outside the USA, call 1.937.526.3662 or visit our website at [midmark.com](http://midmark.com)

© 2023 Midmark Corporation, Versailles, Ohio USA. Products subject to improvement changes without notice. Litho in USA.

007-10044-00 Rev D1 (12/23)

