

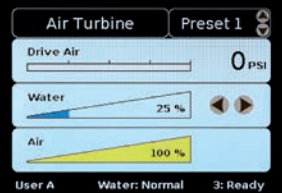
ELEVANCE®
DELIVERY
SYSTEM



TECHNOLOGY



The intuitive user interface is designed to allow you to control all instruments from one easily accessible location. The easy-to-read LED screen design presents your settings in a way that can help make it easier to adjust or return settings to a desired range.



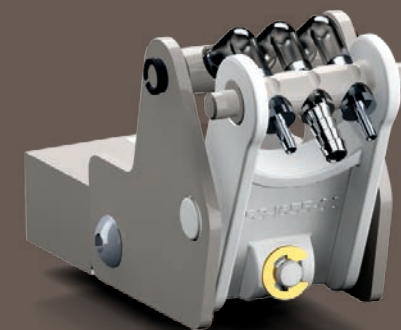
Activate the composite safe light setting or turn the water on/off with the water bypass button, all directly from the delivery or assistant's unit.



The conveniently located USB port on the Integration Control Module® is designed to allow users to install software updates and future features easily and efficiently.



The Elevance® Delivery System is designed to complement the way you work. We've combined a clinician inspired design and cutting edge technology with time tested quality to help improve clinical efficiency. The new Integration Control Module® (ICM) manages all of your components from one location, giving you maximum control that is simple to operate.



Midmark patented Kink Valve® technology is designed to provide an independent control system for each handpiece and an unprecedented level of reliability and control. Unlike traditional valve blocks that require ongoing maintenance of O-rings and diaphragms, this system requires no maintenance.

DESIGN



Our fully-integrated unit head design contains all components inside for a single point of control and smooth lines that help make cleaning easy.



Monitor mounts are designed in both console and left/right configurations, complete with handle to aid in positioning.



Our integrated handle design incorporates an easily activated flex arm that helps make positioning of the delivery unit head smoother and easier.



Blue

Smoke

The Elevance® Dental package is designed to set a new standard in efficiency, access, patient comfort and design. The ICM can help provide the efficiency and precision demanded by today's dental professionals while the sophisticated look is the perfect complement to today's dental office.

The intelligent cuspidor design features a programmable cup fill and flush sequence. The cuspidor bowl is available in three stylish colors: blue, crystal (shown above) and smoke.



Along with having the package in a left/right or console configuration, the delivery unit is available in a versatile 4-position or 6-position model to meet your specific needs. (Not available for Elevance® continental-style unit.)

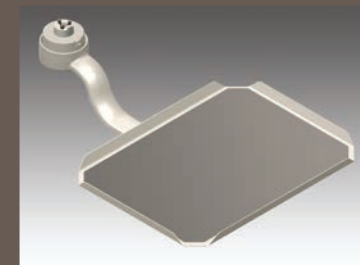
V E R S A T I L I T Y



Continental-Style

The Elevance® continental-style delivery unit has a truly unique whip arm. Designed to mimic a spine, it increases the range of motion in all directions for maximum positioning flexibility.

Designed for easy access of instruments and versatile positioning, three different tray options give users flexibility to choose a tray that best fits their needs.



PRECISE CONTROL

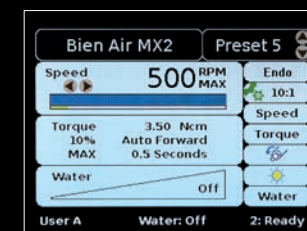


Integration Control Module®

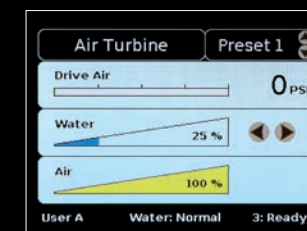
Manage all of your components in one place with digital controls for more precise air pressure and water flow. The ICM is designed to allow three different users to store up to ten presets for each handpiece, reducing setup time and increasing efficiency.



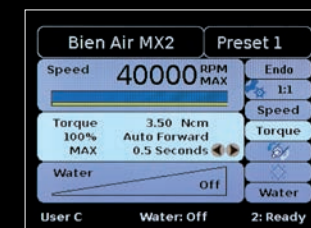
Users
Designed to easily change between three distinct users from the home screen with the push of a button. Each user can have their own presets for each handpiece, language and preferred unit of pressure.



Presets
Ten presets for each handpiece are designed to allow each user to setup their instruments and change their settings easily and efficiently during procedures.



Navigation
Designed to allow users to easily navigate any of the intuitive ICM screens with the help of navigation arrows.



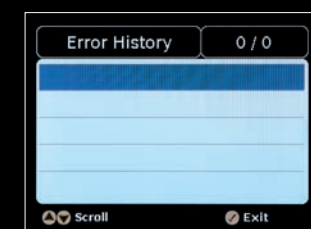
Endodontic Capabilities
Select Endo Mode to automatically shut off all water and air to the handpiece tip. All of the torque adjustments will then appear on the screen.



Automatic Flush Operations
Preset End of the Day or Between Patient flush times to automatically flush handpieces.



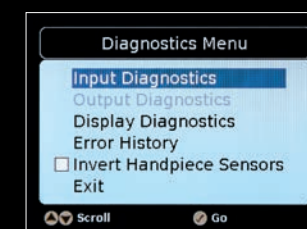
Customization
Customize settings for each user on the unit, including language and preferred pressure unit (PSI, kPa or bar).



Error Tracking
Easily identifiable errors and descriptions are designed to ensure quick and accurate troubleshooting.



Component Status Icons
These icons, designed to be easily viewable from the home screen, provide a quick check of the operating condition of the entire operatory system.



Diagnostics Screen
The delivery system is designed with built-in diagnostics to help users easily check for any issues that arise, ensuring that the operatory will be up and running with minimal downtime.

INTEGRATION



Truly Integrated Devices

Our unique Integration Control Module® is designed to allow for true integration of all devices. Controlling the delivery unit from one centrally located point, there is no longer a need for knobs and switches scattered around the delivery unit. Up to two electric micromotors, a scaler, camera and curing light can be easily built in and contained within the delivery head.



Bien Air® MX2 LED

- Brushless, autoclavable motor
- Maintenance-free
- Motor speeds of 100 to 40,000 RPM for a broad range of procedures
- Programmable high/low RPM and low RPM torque limits with auto reverse
- Ideal for endodontics
- Accepts E type attachments
- Bien-Air Dental 3-year standard warranty



SATELEC® Mini LED Curing Light

- Only 6 to 12 seconds to polymerize 3 mm of any composite
- Wide light spectrum (420-480 nm)
- 3 modes of cure (fast, pulse and ramp)
- Comes standard with light shield and autoclavable 7.5 mm light guide
- Silent operation (no fans)
- Shock resistant and easy to clean



DENTSPLY® Cavitron® Steri-Mate® 360

- Fully-rotating design permits free movement within the oral cavity
- Magnetostrictive technology
- Cable with swivel provides a second point of rotation, designed to allow users to keep their wrist in a neutral position and offer a comfortable user experience
- Water flow adjustment conveniently located on the handpiece
- 30 KHz insert included



SATELEC® Pure Newtron® Slim Ultrasonic Scaler

- New, slim handpiece design is smaller and lighter for better ergonomics
- Powerful, yet gentle for applications beyond scaling such as perio, endo and surgery
- Color coding system to ensure proper tip and power setting
- Most extensive range of tips in the market, over 80
- 3 tips included (#1, 10Z, H3) LED Version (SATELEC® Pure Newtron® Slim B.LED) is also available (shown above)



SOPROLIFE® Camera

- 3 modes designed to optimize your dental practice
- Diagnosis aid mode—designed to show the characterization of lesions at different clinical stages without losing consistency
- Treatment aid mode—images designed to show a differentiation of pre-operative healthy tissue versus diseased tissue
- DAYLIGHT mode—designed to allow dentist to use SOPROLIFE® as a white light intra-oral camera to produce high-quality images



Sopro® 717 Camera

- Highly sophisticated optical unit designed to provide unsurpassed image quality
- Large depth of field (infinite down to 1mm macro)
- New generation LED technology
- Slender distal end designed to provide improved comfort in patient's mouth



Sopro® 617 Camera

- Wide 105° angle of view (easy to see distal areas)
- Curved design follows natural shape of the mouth
- High fidelity images
- LEDs utilize condensers to focus light with minimal shadowing
- Fixed-focus and large depth of field (portrait down to a single tooth)



SOPROCARE™ Camera

- Intraoral camera function with fluorescence-based caries detection system
- Fluorescence-based plaque, calcium and gingival inflammation detection system

We have tried our very best to accurately represent product colors in this brochure. However, due to the nature of printed media, the color of actual products may differ slightly from how they appear on your particular printed piece. In order to confirm your color selection, we strongly recommend that you contact the Midmark Dental Customer Experience department at 1-800-MIDMARK to request a sample before placing your order.

Midmark is an ISO 13485 and ISO 9001 Certified Company.
For more information or a demonstration, contact your Midmark dealer or call: 1-800-MIDMARK Fax: 1-877-725-6495
Outside the U.S.A. call: 1-937-526-3662 Fax: 1-937-526-8214
or visit our website at midmark.com.

© 2013 Midmark Corporation, Dayton, OH.
Products subject to improvement changes without notice
Litho in U.S.A. 007-0946-00 Rev. E1 (7/17)

