

**MIDMARK**

**GLOVE/TOWEL DISPENSER**

DES. **R. LA BRIE**

JOB NO. **11-0989**

DATE **8/28/09**

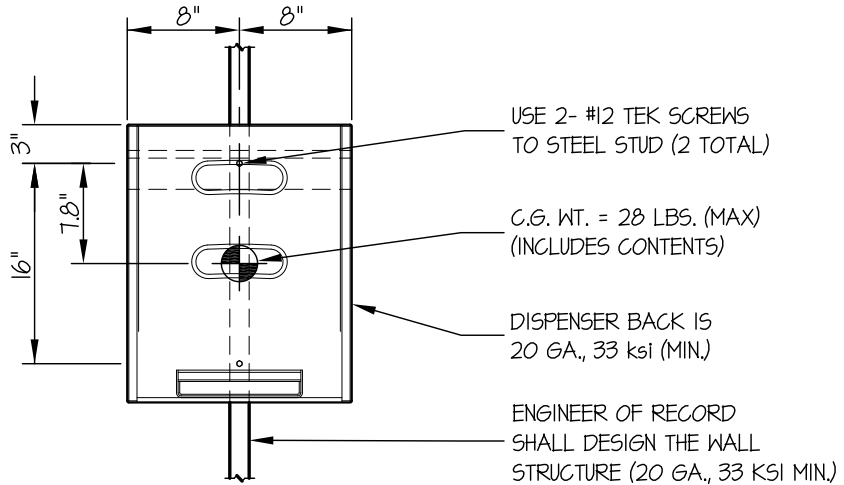
SHEET

**1**

OF **2** SHEETS

SEISMIC ANCHORAGE

WALL MOUNTED



FRONT ELEVATION

NOTES:

- FORCES ARE DETERMINED PER 2007 CALIFORNIA BUILDING CODE SECTION 1613A AND ASCE 7-05 SECTIONS 12 AND 13. ALLOWABLE STRESS DESIGN IS USED.

HORIZONTAL FORCE ( $E_h$ ) =  $0.97 W_p$  ( $S_{DS} = 1.93, a_p = 1.0, I_p = 1.5, R_p = 2.5$ )

VERTICAL FORCE ( $E_v$ ) =  $0.27 W_p$

- CENTER OF GRAVITY (C.G.) WEIGHT IS A MAXIMUM. THIS CALCULATION ENCOMPASSES ALL WEIGHTS UP TO THE MAXIMUM WEIGHT SHOWN.
- ARCHITECT OR STRUCTURAL ENGINEER OF RECORD SHALL PROVIDE SUPPORT STRUCTURE TO SUPPORT WEIGHTS AND FORCES SHOWN.

$T_{MAX} = 24$  LBS/SCREW  
 $V_{MAX} = 32$  LBS/SCREW



**MIDMARK**

**GLOVE/TOWEL DISPENSER**

DES. **R. LA BRIE**

JOB NO. **11-0989**

DATE **8/28/09**

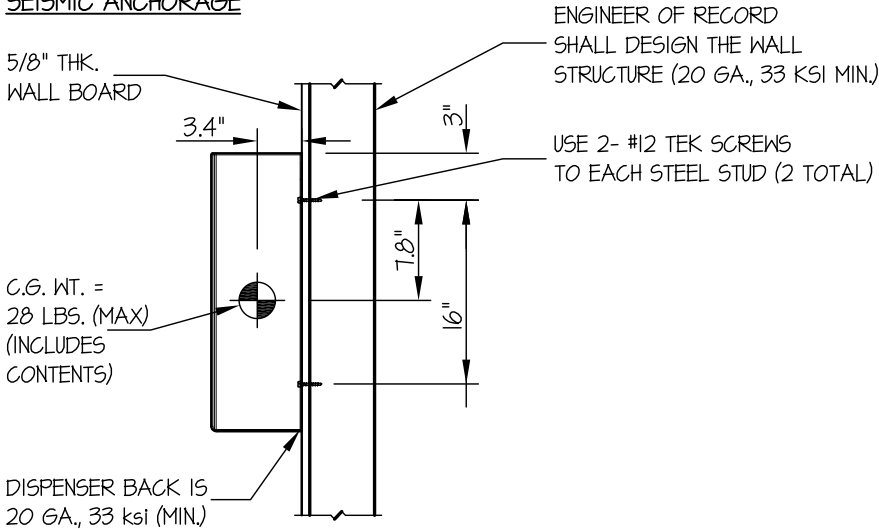
SHEET

**2**

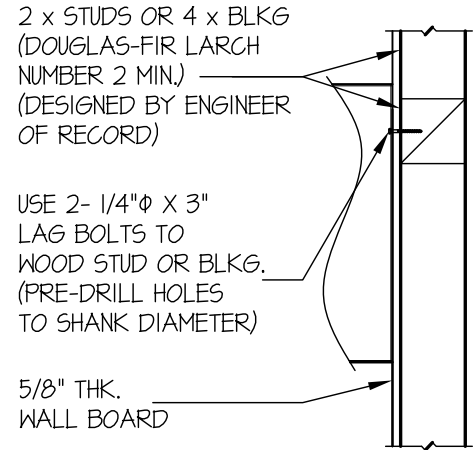
OF **2** SHEETS

SEISMIC ANCHORAGE

WALL MOUNTED



SIDE ELEVATION AT STEEL STUD WALL



SIDE ELEVATION AT WOOD STUD WALL

LOADS:

WEIGHT = 28 LBS. (MAX) (INCLUDES CONTENTS)  
HORIZONTAL FORCE ( $E_h$ ) =  $0.97W_p$  = 27 LBS.  
VERTICAL FORCE ( $E_v$ ) =  $0.27W_p$  = 8 LBS.

SCREW FORCES:

#12 TEK SCREWS TO 20 GAGE, 33 KSI

$T_{ALLOW.}$  = 95 LBS

$V_{ALLOW.}$  = 188 LBS

TENSION (T)

$$T_{VERTICAL} = \frac{(28\# + 8\#)3.4''}{1_{SCREW} (16'')} = 8 \text{ LBS}$$

$$T_{PARALLEL} = \frac{27\#(3.4'')}{2_{SCREWS}(8'')} = 6 \text{ LBS}$$

$$T_{PERP.} = \frac{27\#}{2_{SCREWS}} = 14 \text{ LBS}$$

$$T_{MAX} = 8\# + \sqrt{6^2 + 14^2} = 24 \text{ LBS/SCREW (MAX)}$$

SHEAR (V)

$$V_{MAX} = \frac{28\# + 8\# + 27\#}{2_{SCREWS}} = 32 \text{ LBS/SCREW (MAX)}$$

NOTE:

ARCHITECT OR STRUCTURAL ENGINEER OF RECORD SHALL PROVIDE SUPPORT STRUCTURE TO SUPPORT WEIGHTS AND FORCES SHOWN.