

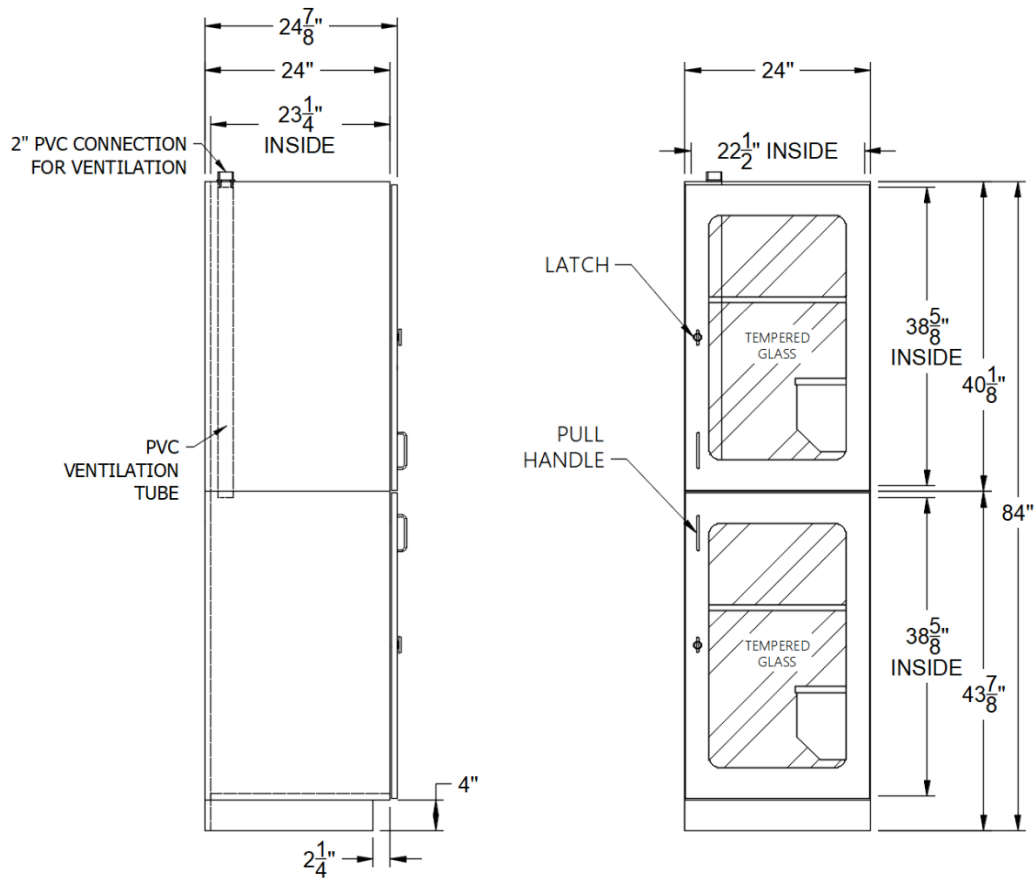
# SPECIFICATIONS

## RAINTREE CAT CONDO – DOUBLE STACK



### Options:

- All doors available with wire grid or tempered glass
- Optional rear viewing window in living area
- Standard latch or keyed locks available
- Vertical scuttles between upper and lower living units
- Ventilation Tube optional for wire grid doors and required for tempered glass doors



**NOTE:**  
All dimensions  
are  $\pm 1/8$ "