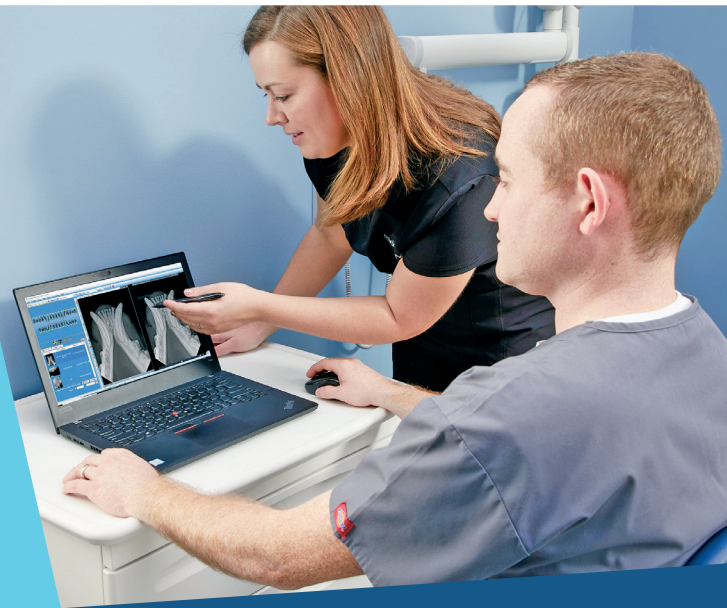


## INTERPRETATION OF DENTAL RADIOGRAPHS

ON-DEMAND WEBINAR  
UP TO 4.5 HOURS RACE<sup>®</sup> CE



Elevate your diagnostic abilities, enhance patient care and make more informed treatment decisions with our on-demand dental radiography courses. Tailored for veterinarians at any career stage, these courses focus on evaluating and interpreting both normal and abnormal canine and feline dental radiographs.

### TRAINING TOPICS INCLUDE:

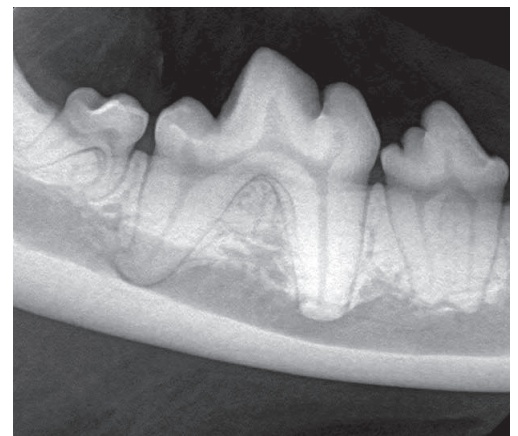
- Tooth anatomy
- Orientation of dental radiographs
- Normal anatomy dental radiographs
- Radiographic signs of disease
  - Periodontal disease
  - Tooth resorption
  - Endodontic disease
  - Osseous lesions
- Case studies

### TO PURCHASE COURSE:

**CANINE + FELINE**  
4.5 hours CE (\$250)  
[midmark.com/RADcaninefeline](https://midmark.com/RADcaninefeline)

**CANINE ONLY**  
2.5 hours CE (\$175)  
[midmark.com/RADcanine](https://midmark.com/RADcanine)

**FELINE ONLY**  
2 hours CE (\$150)  
[midmark.com/RADfeline](https://midmark.com/RADfeline)



### Canine and Feline Radiographic Interpretation Webinars

For more information:  
contact Danielle Heberle at  
[dheberle@midmark.com](mailto:dheberle@midmark.com) or  
go to [midmarkacademy.com](https://midmarkacademy.com).

RACE is a registered trademark of the American Association of Veterinary State Boards.

This program has been approved for up to 4.5 hours of continuing education credit in jurisdictions that recognize RACE approval.

Prices vary for clinics located outside the contiguous United States.

© 2025 Midmark Corporation, Versailles, Ohio USA  
007-10522-00 Rev A1 (1/25)

[midmarkacademy.com](https://midmarkacademy.com)