

Bite resistant.
Exceptional image quality.
Exclusive design.



The Midmark Bite-Resistant DR Sensor is designed for the unique needs of the veterinary market. It combines a patented geometric sensor housing design and exceptional image quality to provide clear, crisp radiographs with unmatched resistance to bite damage—FOUR TIMES stronger than our standard sensor.

RELIABILITY + DURABILITY

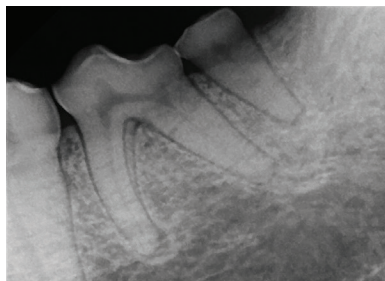
- Eliminates stopping points where damage often occurs, distributing biting force and allowing the tooth to slide off the sensor.
- Imparts a protective plate between the housing and imaging components, further enhancing durability.
- Uses Kevlar®-reinforced cable for reliability and a water-tight connection to reduce problems encountered during routine cleaning.

PEACE OF MIND

- Includes clinical and technical support and the Midmark five-year limited warranty for manufacturing defect.
- Covers accidental damage with a free first-time replacement sensor.
- Combines Midmark Imaging Software with practice management integration capabilities.

IMAGE CLARITY

- Provides exceptional high-quality images, even when using low-dose handheld X-ray generators.
- Captures clearer, more detailed X-ray images right from the start—before any image enhancement—so you get better diagnostic quality from every shot.
- Offers superior image resolution with more pixels per area (pixel size 14 µm).



ENSURE YOUR SUCCESS

Learning together and putting new knowledge into practice can give your team greater confidence and competence. Accredited specialists from Midmark Academy deliver comprehensive, RACE®-approved, hands-on training in Dental Radiography and Positioning. All of this will help you support better outcomes for your patients.



Scan to learn more or
visit midmarkacademy.com

MIDMARK® BITE-RESISTANT DR SENSOR SPECIFICATIONS

Size	Size 2 only
Active Area	36 mm x 26 mm
Number of Pixels	2,574 lines x 1,852 pixels
Pixel Size	14 µm x 14 µm
Theoretical Resolution	35.7 lp/mm
Levels of Grey	4,096
Dynamic Range	72 dB
Signal-to-Noise Ratio	89 dB
Sensor Cable Length	Standalone: 3 m (9.84 ft) Integrated: 1.1 m (3.61 ft)
Connection Type	USB 2.0, High Speed
Transfer Speed	3 seconds
Power Supply	+5 V, per USB 2.0 specification
Level of Protection	IP68 (sensor only, per IEC 60529)
Warranty	5 Year Limited Warranty, Includes free, first time replacement for accidental damage. Free software updates for the life of the product. Unlimited technical assistance through US based support team.
Laptop (Optional)	Preloaded with Midmark Imaging Software, Midmark Device Suite including TWAIN client and calibration files
Laptop Specifications (Recommended)	Operating System: Microsoft® Windows® 11 Pro or Enterprise Processor: Intel® Core i5/i7 performing at a minimum Memory: 16 GB RAM (or greater) Video/Display: 32 true bit color, 1,920 x 1,080 resolution Monitor: LED Backlit display, size 13 in to 15.8 in Ports: High Speed USB 3.0, At least two USB ports Type-A Communication: 1 × Ethernet 10/100 and 1 × Wi-Fi 802.11 g/n Weight: 10 lb maximum Safety Compliance: UL 62368-1 and CSA C22.2 No. 62368-1
Imaging Software Requirements	Review the Midmark DR Sensor User Manual at Midmark.com or contact Midmark Imaging Technical Support at 1.844.856.1232, option 3.
Imaging Software Integration	Midmark Imaging Software supports connectivity with many Practice Management and PACS systems. Contact Midmark Technical Support to explore compatibility with your specific systems at 1.844.856.1232, option 3.

ORDERING GUIDE

SENSOR SYSTEMS

Integrated: For connection through the Midmark DC Generator

XSVN-08 Bite-Resistant DR Sensor, Size 2, 1.1 M Cable

Standalone: For connection through a laptop/computer

XSVS-08 Bite-Resistant DR Sensor, Size 2, 3 M Cable

XSVS-08/L Bite-Resistant DR Sensor, Size 2, 3 M Cable with Laptop

Sensor System Includes: Midmark Bite-Resistant DR Sensor, USB drive with Midmark Imaging Software, documentation kit with user manual, sample sheath pack and starter pack of 1 each size of FlexiProp™ mouth props.

SENSOR ACCESSORIES

ASVS-00/L Laptop

500-433 Sanitary Sheaths, 500 PK, Size 2

9A000002-002 FlexiProp Mouth Prop, Small, 2 PK

9A000002-003 FlexiProp Mouth Prop, Medium, 2 PK

9A000002-004 FlexiProp Mouth Prop, Large, 2 PK



MIDMARK COMPLETE DIGITAL DENTAL RADIOGRAPHY SYSTEMS

Combine the Midmark DC Generator with the Midmark Bite-Resistant DR Sensor for a synergy of technology and efficiency.



Scan to explore our complete radiography systems



MIDMARK ACADEMY DENTAL TRAINING

002-1640-10 Dentistry Best Practices Workshop

VI-RAD Dental X-ray Positioning Training

VI-CPC Cleaning, Probing and Charting Training



For more information on available training, go to midmarkacademy.com.

Kevlar, RACE, FlexiProp, Microsoft, Intel and Windows are all trademarks or registered trademarks of their respective owners.

Midmark is an ISO 13485 and ISO 9001 Certified Company. Certain products are not included. See the complete list at: midmark.com/ISO

For more information, contact your Midmark distributor or call: 1.800.MIDMARK. Outside the USA call: 1.937.526.3662 or visit our website: midmark.com

© 2025 Midmark Corporation, Versailles, Ohio USA
Products subject to improvement changes without notice.

007-10450-00 Rev D1 (6/25)