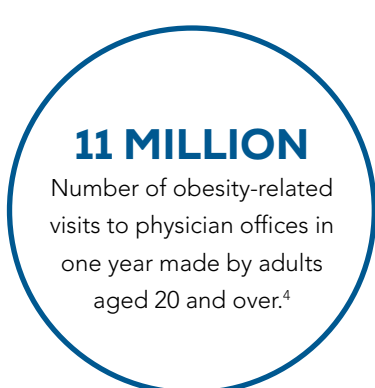
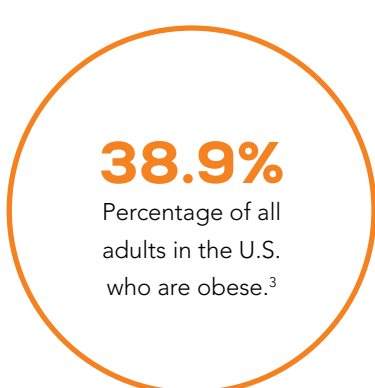
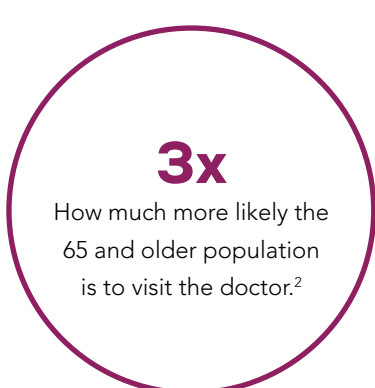
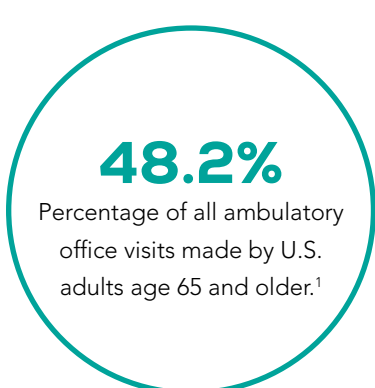




Comfort for Every Body

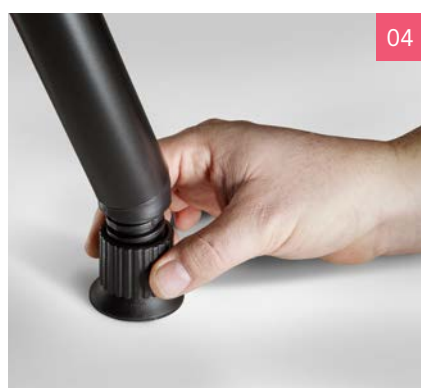
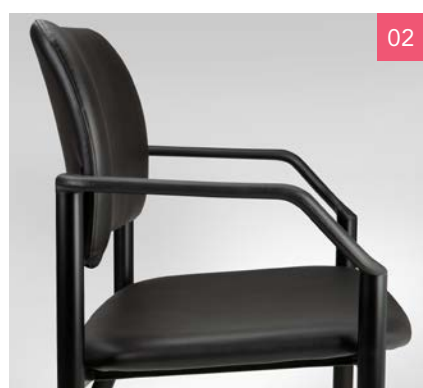
Patient needs are constantly evolving, and every day medical practices see patients with a variety of mobility challenges. One size does not fit all in healthcare. That's why it's so important to help ensure patients of all shapes and sizes feel comfortable and supported throughout the healthcare experience.



A better care experience starts with better patient comfort and confidence. Ritter® side chairs by Midmark help ensure patients and their family members are comfortable in the exam room, waiting room or front office—without sacrificing the durability and quality required of equipment in this environment.



- 01 18-inch seat height to support accessibility
- 02 Contoured seat and back sections to improve patient comfort
- 03 Wall-saver kickback leg design
- 04 Powder-coated, durable black steel tube frame with leveling feet
- 05 Optional high-impact plastic chair arms allow users to position themselves with confidence



Sturdy, stylish design of the Ritter 282 Bariatric Side Chair helps to accommodate more patients comfortably.

650-pound weight capacity

30-inch wide seat



Better care starts with better design.
Learn more at midmark.com



Sources:
 1 https://www.cdc.gov/nchs/data/ahcd/namcs_summary/2015_namcs_web_tables.pdf
 2 https://www.cdc.gov/nchs/data/ahcd/namcs_summary/2015_namcs_web_tables.pdf
 3 <https://www.cdc.gov/nchs/data/databriefs/db288.pdf>
 4 <https://www.cdc.gov/nchs/products/databriefs/db237.htm>

