



DENTAL

Mechanical Room Solutions



Designing Better Care



WE BELIEVE DESIGN IS NOT JUST ABOUT THE SPACE, BUT THE PURPOSE OF THE SPACE.

Midmark® Mechanical Room Solutions are designed for reliability and connected insights to help keep your practice up and running so you can focus on the health of your patients, not your equipment.



Choose a Dependable Life Source

Your dental vacuums and air compressors are the heart and lungs of your practice, pumping air into your handpieces and evacuating aerosols, saliva and other substances at the point of care. Help ensure the continued health of your life source with equipment designed to protect productivity and optimize performance.

06
BETTER INSIGHT
FOR BETTER CARE

10
KEEP YOUR PRACTICE
UP AND RUNNING

14
THINGS TO
CONSIDER

20
MIDMARK SMART
G-VACUUMS

26
MIDMARK POWERMAX
HIGH-PERFORMANCE
VACUUMS

08
COUNT THE COSTS
OF DOWNTIME

12
OPTIMIZE
PERFORMANCE

16
MIDMARK PRODUCTS +
SOLUTIONS

22
MIDMARK POWERVAC
DRY VACUUMS

28
ACCESSORIES +
SERVICE PARTS

18
MIDMARK SMART
AIR COMPRESSORS

24
MIDMARK CLASSIC
SERIES WET-RING
VACUUMS

30
DESIGN WITH MIDMARK



SCAN OR CLICK TO VIEW
MECHANICAL ROOM SOLUTIONS

Better Insight for Better Care

Know how your equipment is performing so you can focus on the people who matter most.

Midmark Smart View™ is a cloud-based service* designed to maximize the value of Midmark products by providing

- real-time performance insights,
- proactive maintenance tracking,
- compliance tracking and reporting,
- and software updates

through the online myMidmark portal.

With continuous enhancements and feature upgrades, Smart View can help eliminate the risks of outdated technology, while enhancing performance to support long-term efficiency and compliance.

** Some features may require an active Smart View plan*

At Midmark, we harmonize clinical space, workflow and technology to design better care experiences.

EXPERIENCE THE NEW MIDMARK DENTAL

With new connected technology and enhanced operator, instrument processing and mechanical room solutions, the new Midmark Dental is helping set a new standard and advance what's possible in dental care. **Discover how we can design better care together.**



**SCAN OR CLICK TO LEARN
HOW TO CONNECT**



SEE THE WHOLE PICTURE

Access usage trends, compliance data and equipment status for your connected Midmark solutions from one secure dashboard, whether you manage one location or many.



ENHANCE PERFORMANCE

Connect your dental chairs, delivery systems and LED lights for continuous software updates designed to enhance equipment performance and workflow.



STREAMLINE EQUIPMENT MANAGEMENT

Manage connected sterilizers across your organization to help improve workflow efficiency, simplify compliance and protect the lifespan of your equipment.



KEEP CARE MOVING

Receive routine maintenance notifications and critical alerts for your connected air compressors and dry vacuums to help minimize downtime and keep care moving.

Count the Costs of Downtime

The mechanical room is often out of sight, out of mind—yet it drives the performance of your entire dental practice. If your air compressor or vacuum goes down, your entire practice grinds to a halt. **What would that kind of downtime cost your practice?**



THE DAILY COST OF BEING DOWN

One day of downtime costs not only that day’s earnings, but also the ongoing overhead you continue to pay even though you’re not seeing patients.

~\$4,000–\$7,000+

LOST REVENUE PER DAY

Average general dental practices generate about \$4,000 to \$7,000 or more in daily revenue.¹

~\$2,000–\$4,000+

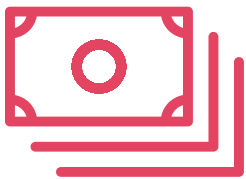
CONTINUING EXPENSES PER DAY

Even when production stops, about 85% of overhead continues, including wages, rent, utilities and leases.^{2,3}

~\$6,000–\$11,000+

TOTAL DAILY LOSS

Between lost production and continuing expenses, a single day of downtime could cost your practice more than \$10,000.



ADDITIONAL RECOVERY COSTS

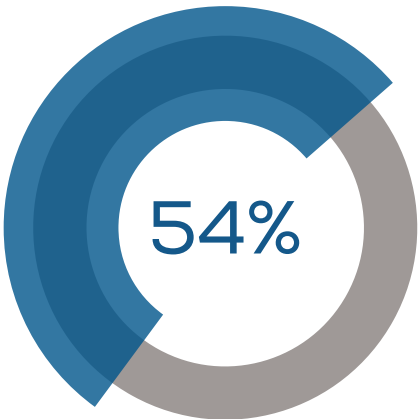
Even after the equipment comes back online, the costs don’t stop. Recovery may require repair bills, loaner units, replacement parts and rescheduling effort, not to mention the long-term impact of lost time and lost patients.

PATIENT DISSATISFACTION

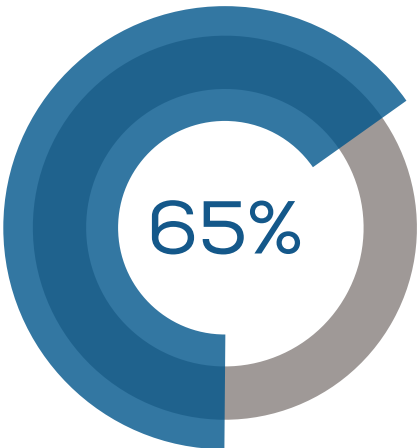
Delayed or canceled appointments can frustrate and inconvenience patients, who may choose to reschedule with a different provider.

DAMAGED REPUTATION + LOST FUTURE REVENUE

Frustrated patients may choose to express their frustration online, leaving negative reviews or poor ratings, deterring new patients and impacting future growth potential.



Of patients say they would switch providers after just one bad experience.⁴



Of new patients are more likely to trust dentists with strong online ratings and reviews.⁴

PROTECT YOUR PRACTICE

A single day of downtime costs much more than the initial service call. It can cost you revenue, time, patient loyalty and more. Protect your practice and your reputation with mechanical room solutions designed to stay online, stay efficient and stay consistent.

Keep Your Practice Up and Running

DESIGNED TO PROTECT PRODUCTIVITY



STAY AHEAD OF POTENTIAL ISSUES

Every practice relies on compressed air and suction to power the tools that keep care moving. When you can see how your air compressor and vacuum are performing, you can spot issues before they interrupt care. Connectivity can give your team real-time insight into equipment status so you can act early, stay proactive and reduce preventable downtime.

Midmark Smart View™ delivers that connectivity and visibility, sending maintenance reminders, performance notifications and alerts when a component of your connected air compressor or vacuum needs attention—from a too-hot mechanical room to a filter approaching its limits. This type of visibility gives you time to act before performance drops, helping you stay ahead of patient schedules, not behind them.

“With Midmark Smart View, I can see what’s happening with my equipment and get notified right away if something isn’t right. That visibility helps me get back up and running faster so I can focus on my patients, not the equipment.”

—Dr. Mark Oleson, Dublin Endodontics

GET STRONG SUCTION YOU CAN COUNT ON

Connectivity is one part of the performance equation, and consistency is the other. Not all dental vacuums respond the same under real-world clinical demands. Many dry vacuums use blower-based pumps that weaken when pressure rises or multiple operatories are in use, causing erratic performance, slowdowns and schedule creep.

Midmark dry vacuums use positive displacement rotary-claw technology to deliver steady, strong suction even as resistance increases. That reliability means you get:

- Consistent suction during demanding procedures
- Dependable evacuation across operatories
- Less variability that slows down care
- Stronger support for high-volume evacuation (HVE)

The consistency of positive displacement helps keep procedures moving, support infection prevention and ensure a predictable patient experience.

BRING THEM TOGETHER FOR RELIABLE PERFORMANCE

Connectivity gives you the foresight to act early, and consistent suction gives you the power to work efficiently. Together, they help protect your productivity and reduce the risk of unexpected interruptions.

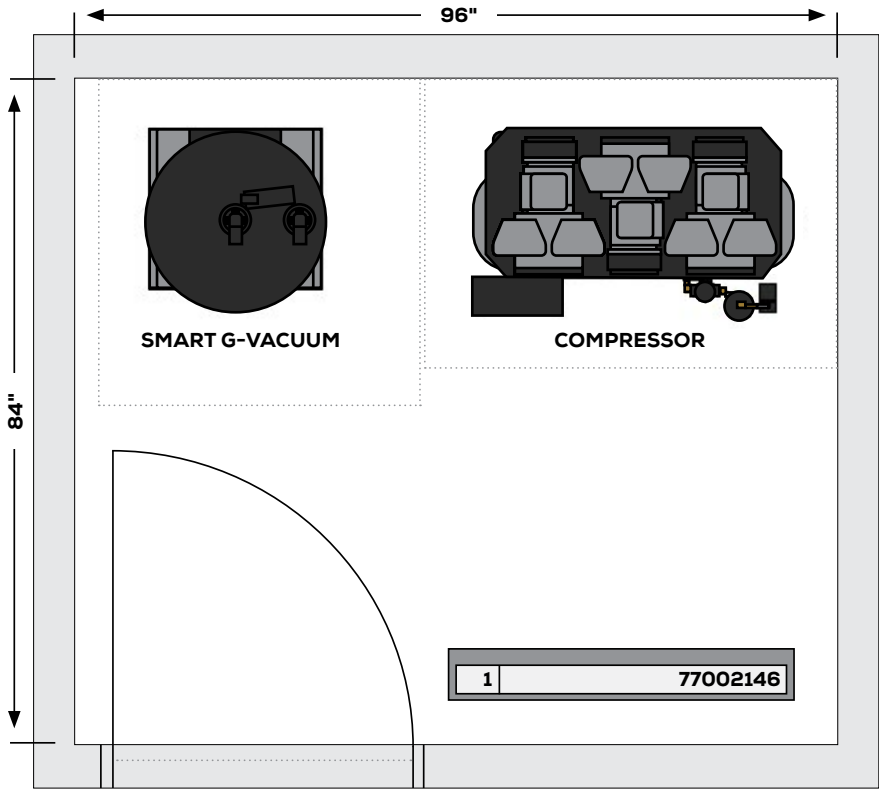
But even the most consistent performance depends on the environment that surrounds your equipment, which is why the next step is designing a mechanical room that helps it thrive.

Optimize Performance



DESIGNED FOR EVERYDAY RELIABILITY

Consistent air and suction rely on healthy equipment. And healthy equipment relies on its environment. Good design helps minimize stress on your equipment, supports consistent performance and helps prevent issues that lead to downtime. Protect your productivity by creating the right mechanical room conditions for your air compressor and vacuum equipment to perform at their peak.



Midmark design experts are ready to help you create your optimal mechanical room. From proper equipment sizing to the plumbing layout, we've got you covered.

Call **1.800.MIDMARK** to get started.

GIVE YOUR EQUIPMENT SOME BREATHING ROOM

Best practices recommend the mechanical room be large enough to position your equipment at least 12 inches apart and 12 inches from each wall.* Without that space, technicians may struggle to install and service your equipment, and your team may find it difficult to perform routine maintenance.

Tight quarters can also reduce airflow and ventilation, placing unnecessary stress on motors and internal components. Adequate space supports healthy equipment, helping protect performance and prevent downtime.

While not the most glamorous room in your practice, the mechanical room plays a critical role in keeping your operatories up and running, so be sure to give it the space your equipment needs.

**Always refer to your equipment's specific clearance requirements.*

CONTROL THE TEMPERATURE + HUMIDITY

Air compressors and vacuum systems naturally release heat during operation, and confined rooms can quickly become too warm without proper ventilation. When temperatures consistently rise above equipment specifications, it may cause premature failure of components.

Humidity adds another challenge. Excessive moisture can accumulate in air lines and place additional strain on motors and pumps. Both excessive heat and excessive humidity can reduce efficiency, cause premature wear and shorten your equipment's lifespan.

For best performance, the solution is simple: set up steady airflow, maintain temperature and humidity within your equipment's recommended ranges, and consider supplemental cooling if the space is enclosed or heavily loaded. A controlled environment supports optimal performance and helps prevent costly downtime, protecting the reliability of your entire practice.

PLAN FOR POWER + PLUMBING

Stable, dedicated power and correct voltage help protect equipment performance and reduce the chance of tripped breakers. Plan circuits according to equipment specifications and easy access for service.

You can position your plumbing and trunk lines to help support future service as well. The best designs make sure lines are direct, appropriately sized and accessible.

Set your equipment up for success with a mechanical room designed to support performance, protect reliability and keep your practice moving.



Things to Consider



ROOM SIZE + LAYOUT

Does your mechanical room layout support ventilation and simplify maintenance?

The right space not only provides room for service technicians to access your equipment for installation, maintenance and repairs, but also helps improve air flow for better ventilation—and longer life.

Consider working with an experienced dental practice designer to optimize your space. **Midmark Design Experts** can help make sure your mechanical room is designed to provide the right environment to keep your practice running smoothly.



CONNECTED ADVANTAGES

What if your equipment could let you know when it needs maintenance or isn't working properly?

Air compressors and vacuums are the heart and lungs that keep practices running. When they go down due to missed routine maintenance or critical errors, the whole practice can come to a standstill.

Consider mechanical room equipment designed to connect for greater reliability and performance. **Midmark Smart View™** connectivity enables you to receive routine maintenance notifications and critical alerts to help you stay ahead of potential issues, minimize downtime and keep care moving.



HANDPIECE LONGEVITY

Are you replacing handpieces more often than their stated service life?

Older and consumer-grade air compressors may not properly clean and dry your compressed air. Air saturated with oil and moisture can damage your handpieces.

Consider a new, clinical-grade air compressor designed for dentistry. **Midmark Smart Air Compressors** are designed to meet the National Fire Protection Association (NFPA) 99 Level 3 standards for healthcare facilities, filtering out 99.9997% of contaminants and drying air to a pressure dew point (PDP) of -25°F.



WATER SAVINGS

Does your vacuum help you conserve water and lower your water bill?

A single wet-ring vacuum can use about 60,000 gallons of water each year. Some dual-platform vacuums can use up to 240,000 gallons per year. You could fill the average backyard swimming pool 12 times a year with that much water.

Consider using a dry vacuum to reduce your water consumption and lower your bills. Positive-displacement technology in **Midmark PowerVac Dry Vacuums** and **Midmark Smart G-Vacuums** delivers strong, consistent suction without using water, helping you cut waste and control costs.



ENERGY EFFICIENCY

Is your vacuum driving up your electricity bills?

Many vacuums operate at full power regardless of demand, generating excess heat and consuming more energy than systems that adjust performance automatically as needed.

Consider a vacuum with demand-based energy management. The **Midmark Smart G-Vacuum** uses a variable frequency drive (VFD) that automatically adjusts motor speed to match suction demand. Reducing power during low-demand periods helps minimize energy consumption, while increasing power as needed maintains consistent suction.



SCALABILITY

Can your vacuum scale to meet capacity as your practice grows?

Increasing user count increases the demand on your vacuum and can limit the obtainable suction. Most dental vacuums require the purchase of a new model to meet that increased demand.

Consider a vacuum with the flexibility to grow with your practice. **Midmark PowerVac** and **Smart G-Vacuums** can support expanding practice demands with a simple upgrade kit.

Midmark[®] Products + Solutions



SCAN OR CLICK TO
VIEW PRODUCTS

Midmark® Smart Air Compressors

Available with Smart View™

DESIGNED FOR SAFE, CONFIDENT CARE

Help protect your patients, optimize handpiece performance and preserve your equipment with Midmark Smart Air Compressors. Featuring a coalescing filter that removes 99.9997% of compressed-air contaminants and a drying system that lowers the pressure dew point to below 0°F (-25°F), these compressors are purpose-built to deliver the clean, dry air your practice depends on.



01

01 OIL-LESS DESIGN

Simplify maintenance with an oil-less design that eliminates messy oil changes and helps conserve resources.

02 SOUND COVER

Create a quieter, more comfortable environment with an optional sound cover that reduces noise by 5 decibels.

03 AIR FILTRATION + DRYING

Help protect handpieces from oil, moisture and premature wear with a 0.01-micron coalescing filter and desiccant drying system that provide clean, dry air.

04 HIGH COMPRESSION RATE

Leverage one of the highest cubic-feet-per-minute (CFM) compression rates on the market for consistent, dependable airflow.

- **SMART VIEW™ CONNECTIVITY**
Connect to Smart View™ for greater visibility into compressor health and status, including routine maintenance notifications and critical alerts that can help prevent downtime and keep care moving.

- **USER CAPACITY OPTIONS**
Support your workflow with models available based on user capacity, including 1–3 users, 3–5 users, 5–7 users or 7–10 users.

- **NFPA COMPLIANCE**
Equip your practice with NFPA 99 Level 3-rated air compressors designed specifically for dentistry.

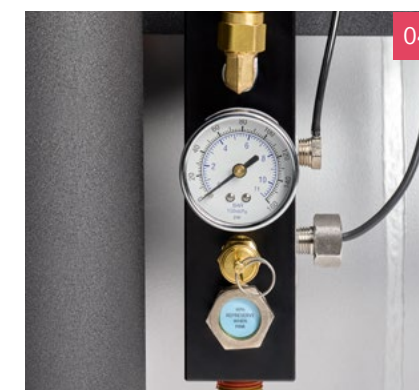
- **WARRANTY COVERAGE**
Protect your equipment with a 5-year/10,000-hour full-product limited warranty.



02



03



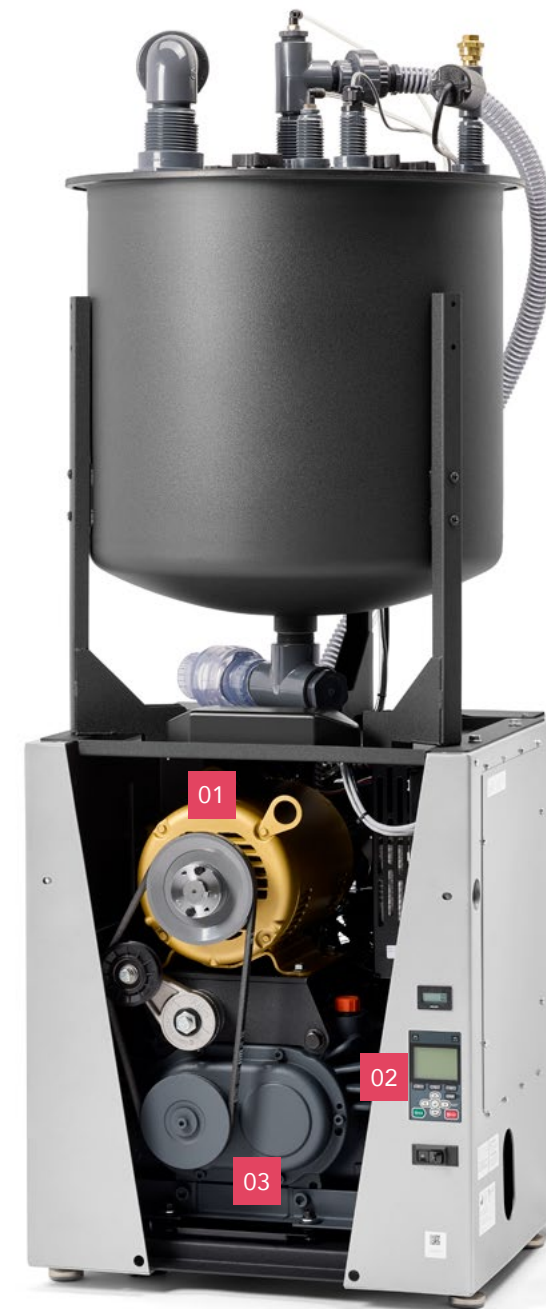
04

Midmark® Smart G-Vacuums

Available with Smart View™

DESIGNED FOR EFFICIENCY, RELIABILITY + STRENGTH

The Midmark® Smart G-Vacuum leverages the reliability of positive-displacement pump technology to deliver consistently strong suction in your operatories. The vacuum's oil-less, water-less design helps simplify maintenance and, together with demand-based energy management, helps lower your utility bills and conserve resources for a greener planet.



01 3-HORSEPOWER MOTOR

Benefit from a high-performance 3-hp motor that helps maintain strong, consistent suction across operatories.

02 VARIABLE FREQUENCY DRIVE

Get exactly the power you need, when you need it, with a variable frequency drive (VFD) that automatically adjusts motor speed to match suction demand.

03 POSITIVE DISPLACEMENT TECHNOLOGY

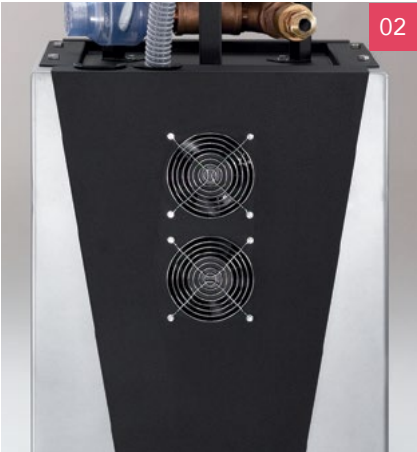
Optimize performance with positive displacement technology delivering stronger, more consistent suction than blower-based vacuums and a suction strength of up to 18" Hg—about twice the strength of other dry vacuums.

- **OIL-LESS + WATERLESS DESIGN**
Simplify maintenance and conserve resources with an oil-less, waterless design that eliminates water waste and messy oil changes.
- **SMART VIEW™ CONNECTIVITY**
Connect to Smart View™ for greater visibility into vacuum health and performance, with routine maintenance notifications and critical alerts that help prevent downtime and keep care moving.
- **USER CAPACITY OPTIONS**
Support your workflow with Smart G-Vacuum models based on user capacity, including 3–5 users, 5–7 users, 6–10 users or 7–10 users (twin vs. single), 10–14 users, or 14–20 users.
- **CAPACITY UPGRADE KIT**
Expand user-count capacity as your practice grows with a simple upgrade kit, no full-system replacement required.
- **NFPA COMPLIANCE**
Equip your practice with an NFPA 99 Level 3-rated vacuum designed specifically for dentistry.
- **WARRANTY COVERAGE**
Protect your investment with a 5-year/10,000-hour limited full-product warranty and a 10-year/20,000-hour limited pump warranty.

Midmark® PowerVac® Dry Vacuum

DESIGNED FOR POWERFUL SUCTION

Engineered for exceptional power and performance, the Midmark® PowerVac Dry Vacuum is both oil-less and waterless, helping lower your water bills and conserve resources for a greener planet.



- 01 OIL-LESS + WATERLESS DESIGN**
Simplify maintenance and conserve resources with an oil-less, waterless design that eliminates water waste and messy oil changes.
- 02 TWIN COOLING FAN**
Help reduce wear and tear on the motor and other internal components with a built-in twin 200 CFM cooling fan.
- 03 HEAVY-DUTY CASTERS**
Simplify installation and service access with exclusive, heavy-duty casters that make positioning and moving the PowerVac easier.
- 04 PLUG-AND-PLAY HOSE CONNECTIONS**
Make setup quick and easy with plug-and-play hose connections that require no tools.

- POSITIVE DISPLACEMENT TECHNOLOGY**
Optimize performance with positive displacement technology delivering stronger, more consistent suction than blower-based vacuums and a suction strength of up to 18" Hg—about twice the strength of other dry vacuums.
- ADJUSTABLE LEVELING FEET**
Keep your vacuum level, even on irregular surfaces, with adjustable leveling feet.
- USER CAPACITY OPTIONS**
Support your workflow with PowerVac models based on user capacity, including 3–5 users, 5–7 users, 6–10 users or 7–10 users (twin vs. single), 10–14 users, or 14–20 users.
- CAPACITY UPGRADE KIT**
Expand user-count capacity as your practice grows with a simple upgrade kit, no full-system replacement required.
- NFPA COMPLIANCE**
Equip your practice with an NFPA 99 Level 3-rated vacuum designed specifically for dentistry.
- WARRANTY COVERAGE**
Protect your equipment with a 5-year/10,000-hour full-product limited warranty; 10-year/20,000-hour pump limited warranty.

Midmark® Classic Series® Wet-Ring Vacuums

DESIGNED TO MAXIMIZE SPACE

Classic Series Wet-Ring Vacuums deliver dependable performance in a compact design that helps maximize space without sacrificing power. Choose a model with internal water recycling to help minimize freshwater consumption and lower utility costs.



- 01 INTAKE MANIFOLD**
Maintain smooth airflow and consistent performance with an intake manifold designed for efficient operation.
- 02 DUAL-PUMP CONTROLS**
Reserve operational control on twin-model vacuums with individual on/off switches and hour meters for each pump.
- 03 WATER RECYCLING**
Choose a model with internal water recycling to help reduce freshwater consumption and lower water-related utility costs.



- 04 RECYCLING BYPASS**
Use the recycling bypass valve to switch between recycling and freshwater operation when needed—for example, to reduce heat or mineral buildup and help protect pump performance.

- ALUMINUM-BRONZE HOUSING**
Rely on durable aluminum-bronze construction to withstand the demands of daily wet-vacuum operation and enhance equipment longevity.



- USER CAPACITY OPTIONS**
Support your workflow with models based on user capacity, including 3 users, 5–7 users, 7–10 users, 6–10 users, 10–14 users or 14–20 users.
- NFPA COMPLIANCE**
Equip your practice with an NFPA 99 Level 3-rated vacuum designed specifically for dentistry.
- WARRANTY COVERAGE**
Protect your equipment with a 5-year/10,000-hour full-product limited warranty.

Midmark® PowerMax™

High-Performance Vacuums

DESIGNED FOR THE MOST DEMANDING PROCEDURES

Designed for specialists who require the highest level of suction, Midmark PowerMax vacuums provide exceptional strength the moment it's needed. By activating only when required, the system helps conserve energy, reduce wear and support long-term reliability.



01 EASY-TO-READ HOUR METER
Monitor system usage and support timely maintenance with a clear, easy-to-read hour meter.

02 VIBRATION-ISOLATING FEET
Help reduce noise and enhance comfort with vibration-isolating feet.

03 RECOVERY ROOM PACKAGE
Enhance safety protocols with an optional recovery room package for in-operatory waste containment and visual monitoring during procedures.



04 OIL-LESS ROTARY VANE
Count on an oil-less rotary vane pump for consistent performance without messy oil changes.

- **SUCTION STRENGTH**
Get up to 21" Hg of strong, reliable suction for demanding specialty procedures.

- **NFPA COMPLIANCE**
Equip your practice with an NFPA 99 Level 3-rated vacuum designed specifically for dentistry.

- **WARRANTY COVERAGE**
Protect your equipment with a 2-year limited product warranty.



Accessories + Service Parts

DESIGNED TO PRESERVE + ENHANCE

For more information on Midmark parts and accessories, please contact Midmark Customer Experience at **1.800.MIDMARK**.

AIR COMPRESSOR ACCESSORIES + SERVICE PARTS



PowerAir® Sound Covers
Reduce compressor sound by 5 dBA



PowerAir Tandem Compressor Kit
Enables simultaneous operation of two Midmark dental air compressors connected to a common operator air supply line

AIR COMPRESSOR + VACUUM ACCESSORIES



Stack Rack
Lets you stack certain compressor and vacuum models to save space



Lifting Handles
Help you move equipment using this set of 4 heavy-gauge steel handles with foam comfort-grip handheld pads and attached lock pins



Low-Voltage Control Relays
Provide a mechanical switch to turn the unit on and off from your control panel



Voltage Buck and Boost Transformers
Decrease or increase incoming voltage by 10% when incoming line voltage is too high or too low for equipment specifications

VACUUM ACCESSORIES



Smart G-Vacuum Conversion Kit
Converts two single Smart G-Vacuum units into a twin unit



PowerVac Conversion Kit
Converts two single PowerVac units into a twin unit



Solmetex® Unit
Provides a certified (ISO 11143:2008) 99% separation rate



PowerVac and Smart G-Vacuum Mounting Kits
Mount a Solmetex® amalgam separator to the PowerVac or Smart G-Vacuum



Water Filter/Bypass Systems
Provide safe water supply shutoff from the dental operator



Control Panels
Provide customizable remote switches to control your air, vacuum and water lines



Dispos-A-Bowl
Provides a safe, smart way to dispose of used vacuum filters and waste



Precision Clense Plus
Cleans and deodorizes the entire evacuation system



Mineral Deposit Reducer Kit
Reduces mineral deposit buildup in wet-ring vacuums located in regions with mineralized ground water or "hard water"



Recovery Room Accessories
Includes a package of 5 disposable canisters, a DISS free-flow regulator, a DISS outlet station and 6 feet of conductive tubing



Wastewater Hookup Kit
Plumbs wastewater for two CV3 or CV5 vacuums to operate as a dual system (CV6 or CV10 equivalent); requires Dual Hookup Kit



Multi Vacuum Intake / Exhaust Water Valve Kits
Plumb intake and exhaust water for two CV3 or CV5 vacuums to operate as a dual system (CV6 or CV10 equivalent); requires Dual Hookup Kit



PowerMax Exhaust Kits
Vent the PowerMax Vacuum system to the outside



Air/Water Separators
Mount to the wall and separate exhaust air from exhaust water

Design with Midmark®

DESIGNED FOR YOU

Our design experts are ready to help you personalize and equip your entire clinical environment—from the layout of every room to each sterilizer, chair, door and drawer, down to the smallest detail. Let us help you design the best environment for your practice.



CONNECT VIRTUALLY FOR LIVE DESIGN

Connect with Midmark Live Design services to bring your vision to life. We help you visualize your space, understand how it flows and spot potential challenges so you can make confident decisions to support better care.



**SCAN OR CLICK
TO SCHEDULE AN
APPOINTMENT.**



JOIN US IN PERSON FOR A MIDMARK EXPERIENCE TRIP

Explore equipment, finishes and floor plan options during a hands-on Midmark Experience trip. With expert guidance and a clear picture of your options, you'll be able to make more confident, informed decisions for your practice.



**SCAN OR CLICK TO
REQUEST A VISIT**



STREAMLINE YOUR DELIVERY + INSTALLATION

Ensure a smooth, on-time setup with Midmark Delivery Services. Our team coordinates the shipping, delivery, staging and setup of your Midmark equipment to help keep your project on track.



**SCAN OR CLICK TO LEARN
MORE ABOUT MIDMARK
DELIVERY SERVICES**

SOURCES

- 1 Lost production benchmark: Henry Schein One 2024 benchmark study of 2,500+ US practices reported \$7,112/day average gross production for general-dentistry providers. Industry sources commonly show \$4,000–\$7,000/day for general practices. – Henry Schein One, “Top Providers Nearly Double Average Daily Gross Production,” 2024. <https://hsps.widen.net/s/7tpsrqw7zm/hs1-ja-benchmark---final>
- 2 Overhead benchmark (60–65%): General dental practices typically operate at 60–65% overhead (excluding doctor compensation). – Overjet, Average Dental Office Overhead: Complete Breakdown by Practice Size (2024–2025). <https://www.overjet.com/blog/average-dental-office-overhead-complete-break-down-by-practice-size>
- 3 Continuing expenses 85% calculation: Dental Economics reports that true variable costs like supplies (~6%) and lab fees (~8%) total ~14% of collections. The remainder (~86%) reflects fixed or semi-fixed expenses that continue even during downtime. Rounded for conservative communication to ~85% continuing overhead. – Dental Economics, Tracking Dental Practice Overhead and What the Results Mean (April 1, 2021). https://www.dentaleconomics.com/practice/overhead-and-profitability/article/14201431/tracking-dental-practice-overhead-and-what-the-results-mean?utm_source=chatgpt.com
- 4 Gitnux, Customer Experience in the Dental Industry Statistics (April 29, 2025). <https://gitnux.org/customer-experience-in-the-dental-industry-statistics>



Designing better care.®

Solmetex is not a trademark of Midmark Corporation and is the sole property of its respective owner.

Midmark is an ISO 13485 and ISO 9001 Certified Company. Certain products are not included. See the complete list at: midmark.com/ISO

For more information, contact your authorized Midmark distributor or call: 1.800.MIDMARK

Outside the USA, call: 1.937.526.3662 or visit our website: midmark.com

© 2026 Midmark Corporation, Versailles, Ohio USA
Products subject to improvement changes without notice.

007-10052-00 Rev F1 (3/26)

