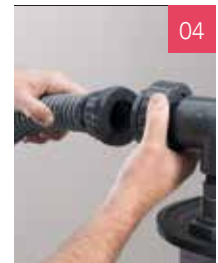


PowerVac® Dry Vacuum



THE POWERVAC IS MORE THAN PURE POWER

The Midmark PowerVac is the first dry vacuum to combine the advanced features your dental practice demands into one flexible, performance-driven system. The PowerVac creates a new standard for dental dry vacuums with exceptional power and performance.

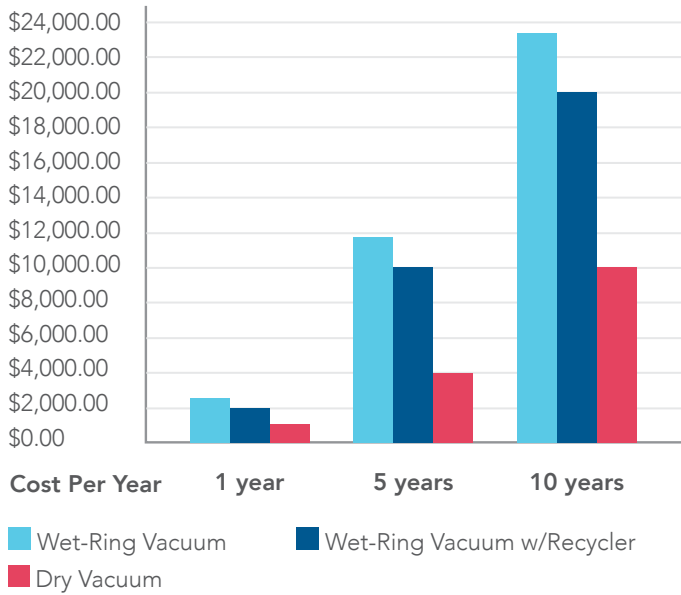
Features:

- Oil-less and water-less design
- Quiet operation
- Consistent high performance – up to 18" Hg
- Compact design uses similar floor space as conventional wet-ring vacuums
- Upgradable flexibility – can accommodate 1-20 users
- Can replace many types of existing vacuum technologies, regardless of plumbing configuration
- Unmatched product warranty – 5-year/10,000-hour full-product; 10-year/20,000-hour pump

- 01** The advanced PowerVac pump has an integrated silencer to reduce noise level, making it one of the quietest dry vacuums on the market.
- 02** Exclusive, heavy-duty casters make moving and maneuvering the PowerVac easy. The adjustable leveling feet keep it level even on irregular surfaces.
- 03** Twin 200-CFM fan keeps the PowerVac cool, reducing wear and tear on the motor and other internal components.
- 04** Plug-and-play hose connections mean there are no tools required for installation.

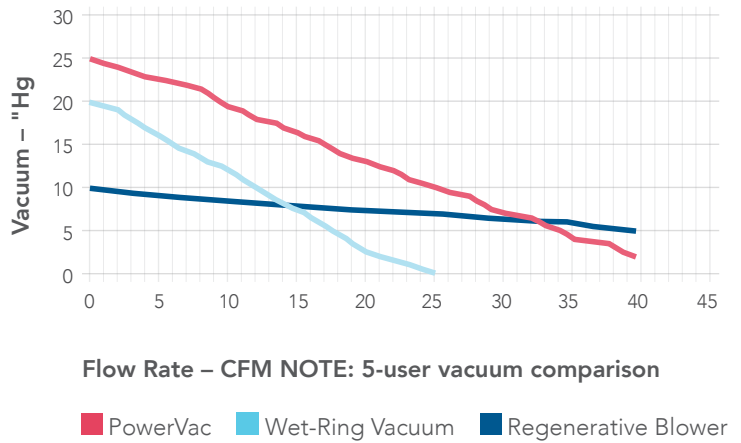
Keep your office running smoothly and safely with the versatility, durability and high performance of the PowerVac Dry Vacuum.

OPERATING COSTS OVER TIME*



*2000 hours/yr using a Twin 1-HP pump. Includes costs for water, electricity and maintenance items.

PERFORMANCE



MIDMARK POWERVAC SPECIFICATIONS

Model/Order No.	P3 (SINGLE)	P5 (SINGLE)	P6 (TWIN)	P7 (SINGLE)	P10 (TWIN)	P14 (TWIN)
No. Users	3-5	5-7	6-10	7-10	10-14	14-20
No. Vacuums	1	1	2	1	2	2
Total Horsepower	2	3	6	3	6	6
Vacuum (inches Hg)	up to 18	up to 18	up to 18	up to 18	up to 18	up to 18
Voltage	208-230 V 60 Hz	208-230 V 60 Hz	208-230 V 60 Hz	208-230 V 60 Hz	208-230 V 60 Hz	208-230 V 60 Hz
Total Amps	11.4	11.4	11.4 x 2	11.4	11.4 x 2	11.4 x 2
Circuit Breaker Amps	30	30	30 x 2	30	30 x 2	30 x 2
Dimensions Overall: H x W x D	58" x 22" x 22"	58" x 22" x 22"	58" x 56" x 22"	58" x 22" x 22"	58" x 56" x 22"	58" x 56" x 22"
Base: H x W x D Tank: H x W x D	25" x 22" x 20" 34" x 22" x 22"	25" x 22" x 20" 34" x 22" x 22"	25" x 22" x 20" 34" x 22" x 22"	25" x 22" x 20" 34" x 22" x 22"	25" x 22" x 20" 34" x 22" x 22"	25" x 22" x 20" 34" x 22" x 22"
Shipping Weight	Base - 402 lb Tank - 90 lb	Base - 402 lb Tank - 90 lb	Base - 402 lb x 2 Tank - 90 lb x 2	Base - 402 lb Tank - 90 lb	Base - 402 lb x 2 Tank - 90 lb x 2	Base - 402 lb x 2 Tank - 90 lb x 2



Accessories

- 01 Precision Clense Plus Evacuation System Cleaner** keeps your vacuum thoroughly clean, naturally disinfected and deodorized.
- 02 The Solmetex® NXT Hg5 amalgam separator** is ISO 11143:2008 certified at greater than 95% separation and meets all "EPA Dental Rule" requirements.

Solmetex® is a trademark owned by Solmetex, LLC.

007-10068-00 Rev. B1 (12/18)
© 2018 Midmark Corporation, Miamisburg, Ohio USA
All rights reserved.



Complies with NFPA 99C level 3

