



REAL-TIME LOCATING SYSTEM

On-Premises Asset Tracking + Management



Your equipment – in the right place, at the right time for patient care



Inefficient equipment workflow is a real cost to health systems today. Typical hospital assets (like IV pumps) sit idle 60-70% of the day*, yet nurses and biomedical teams struggle to find the equipment they're looking for. Searching for equipment wastes time, hinders productivity and delays patient care.

A real-time locating system (RTLS) helps you not only find equipment, but optimize inventories, increase equipment utilization and reduce overall capital expenditures with the power of accurate data... all contributing to a positive patient experience.

Be sure that your staff has the equipment they need—when they need it—with Midmark RTLS.

*Acceptable industry average; Midmark RTLS customer feedback.



Asset tracking: a solid foundation to build on

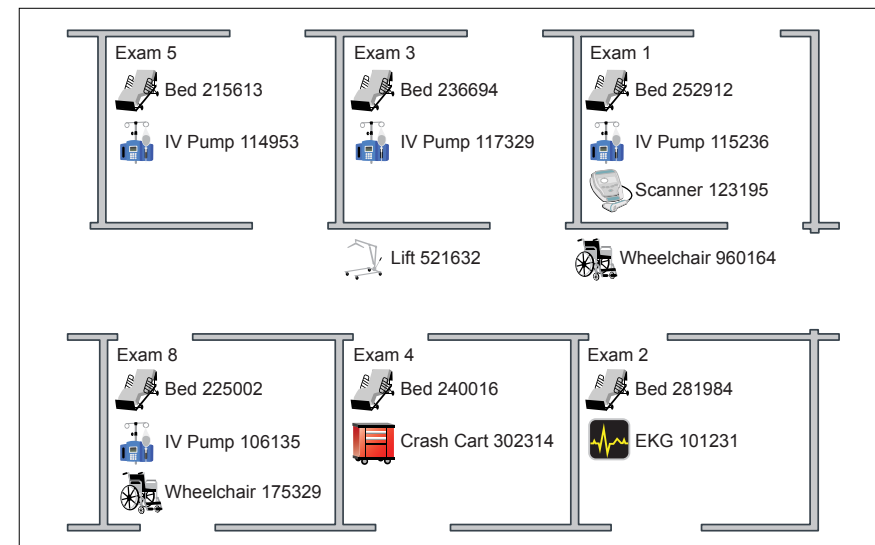
Easily locate equipment with RTLS to improve biomedical and nursing team efficiency.



Type	Tag #	Asset ID	Desc.	Location	Time Entered	Manufacturer	Model	Owner	PM Date	Batt. Chg Date
	31007	115236	IV Pump	1st Floor East Exam 1	3/22/21 9:18:14 AM	Baxter	Sigma Spectrum	Pat Trnsprt	3/10/2021	10/10/2021
	31062	117329	IV Pump	1st Floor East Exam 3	3/22/21 10:02:02 AM	Baxter	Sigma Spectrum	Pat Trnsprt	3/10/2021	10/10/2021
	31074	114953	IV Pump	1st Floor East Exam 5	3/22/21 10:15:24 AM	Baxter	Sigma Spectrum	Mat Mgmt	3/25/2021	08/15/2021
	31088	106135	IV Pump	1st Floor East Exam 8	3/22/21 9:15:57 AM	Baxter	Sigma Spectrum	Pat Trnsprt	3/25/2021	08/15/2021

QUICKLY LOCATE ASSETS.

The sortable data on the Enterprise View® List allows you to quickly find assets and view preventive maintenance (PM) dates as well as other asset details.



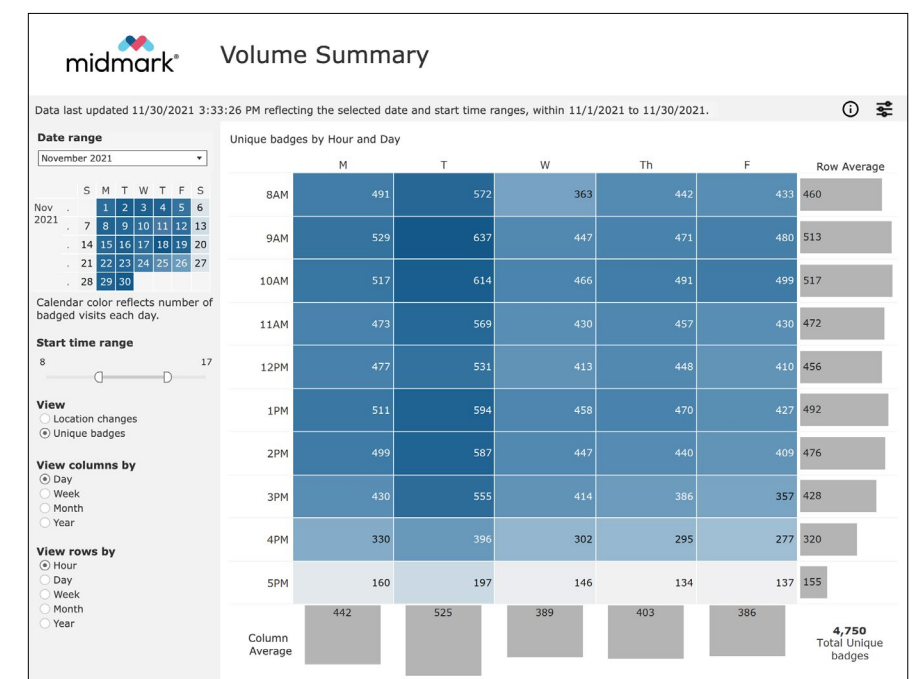
VISUALIZE ASSET LOCATIONS.

Enterprise View Floorplans graphically represent the locations of mobile medical equipment in key areas of your facility.

IMPROVE OPERATIONS WITH HISTORICAL ANALYSIS.

Take the guesswork out of asset-related decision making with a full suite of reports:

- Movement History
- Location History
- Interactions
- Volume Summary
- Time in Locations
- Inventory + Low Battery



Enhance asset tracking with optional, advanced functionality

Add rules-based automation and interfaces to proactively manage equipment.

PAR Asset Type View						
Asset Type PCU Pump						
UNIT	COUNT	ALERT	CRITICAL	PAR	HIGH	EVENTS
All Units	151	Low	130	152	172	
Pediatric Care	21	Low	18	22	24	
ICU	25		20	23	26	
Rehab	5		4	5	6	
1N	11	High	9	10	11	
IS	23	Low	21	24	27	
Oncology	26		21	24	27	
ED	16	Critical	18	20	22	
Surgery	16	Low	15	17	19	
Distribution	6		3	5	7	
Biomed	2		1	2	3	
Total	151					

OPTIMIZE INVENTORY WITH PAR LEVEL MANAGEMENT.

Visually manage assets with periodic automatic replenishment (PAR) levels to know at a glance which units are running low on key assets and which are overstocked.

Keeping tabs on equipment inventory allows hospitals to use equipment to its fullest capacity and save on unnecessary equipment expenditures, a valuable benefit as hospitals work towards financial recovery from the COVID-19 pandemic. PAR Level Management is easily configurable and scalable to fit each facility's specific goals and needs.

RECEIVE ALERTS FOR PATIENT SAFETY.

If an asset that's been designated for recall or is past its PM date is detected in a patient room, alerts are sent to designated workstations.

REDUCE INVENTORY SHRINKAGE WITH EXIT ALERTS.

Receive alerts when assets are seen near areas where they may exit the facility.

	Attention	Recalled IV Pump 116347 is present in Patient Room 2105	:27	
	Attention	Crash cart 302316 is near South Hall Exit	:15	
	Attention	IV Pump 115236 is past PM Date - present in Exam Room 1	:10	
	Attention	IV Pump inventory is below threshold in Clean Utility 4S	:01	

Type	Tag #	Asset ID	Desc.	Location	Time Entered	Manufacturer	Model	Owner	PM Date	Batt. Chg Date	Recall
	31007	115236	IV Pump	1st Floor East Exam 1	3/22/21 9:18:14 AM	Baxter	Sigma Spectrum	Pat Trnsprt	3/10/2021	10/10/2021	
	31062	117329	IV Pump	1st Floor East Exam 3	3/22/21 10:02:02 AM	Baxter	Sigma Spectrum	Pat Trnsprt	3/10/2021	10/10/2021	
	31074	114953	IV Pump	1st Floor East Exam 5	3/22/21 10:15:24 AM	Baxter	Sigma Spectrum	Mat Mgmt	3/25/2021	08/15/2021	
	31088	106135	IV Pump	1st Floor East Exam 8	3/22/21 9:15:57 AM	Baxter	Sigma Spectrum	Pat Trnsprt	3/25/2021	08/15/2021	
	31090	119954	IV Pump	1st Floor East Exam 7	3/22/21 8:32:01 AM	Compression Th	Vasopress DVP	Mat Mgmt	4/12/2021	09/12/2021	
	31133	960164	Wheelchair	1st Floor East North Hall	3/22/21 8:18:14 AM	Invacare	Invacare 3000	Pat Trnsprt	5/18/2021	09/18/2021	
	31150	131612	Media Cart	1st Floor East Exam 12	3/22/21 10:40:24 AM	Samsung	DVD with monitor	Pat Trnsprt	5/18/2021	09/18/2021	
	32010	101753	Peds Infusi	1st Floor East Exam 10	3/22/21 10:05:36 AM	Smiths Medical	Medfusion 4000	Mat Mgmt	6/18/2021	09/18/2021	
	32050	123126	Syringe	1st Floor East Exam 9	3/22/21 9:52:14 AM	Smiths Medical	Medfusion 2500	Mat Mgmt	7/10/2021	08/10/2021	
	32075	103319	Syringe	1st Floor East Exam 11	3/22/21 10:24:51 AM	Smiths Medical	Medfusion 3500	Mat Mgmt	8/10/2021	09/10/2021	

VISUALLY MANAGE PM ACTIVITY.

When PM dates are entered into the system, the Enterprise View List highlights any asset nearing or past its PM date.

ADD LOCATION INTELLIGENCE TO YOUR CMMS.

Reduce the need for multiple applications by displaying information in your computerized maintenance management system (may require services from CMMS vendor).

EFFORTLESSLY COMMUNICATE RECALLS.

Marking an asset as recalled visually communicates on all Midmark RTLS views that the equipment should not be used in patient care until the recall status is corrected.

INTEGRATE TEMPERATURE MONITORING.

Add your temperature/environmental monitoring dashboard to the Midmark RTLS Enterprise View®.

SIMPLIFY ACCESS WITH ACTIVE DIRECTORY.

Interface Midmark RTLS Authentication Manager with your facility's Active Directory database to easily manage access to RTLS applications.

“With RTLS, staff no longer spend time searching for equipment—instead, they use that time to provide direct patient care, to efficiently maintain assets for safer patient care, or to perform other value added tasks.”



Information Systems Analyst
Billings Clinic

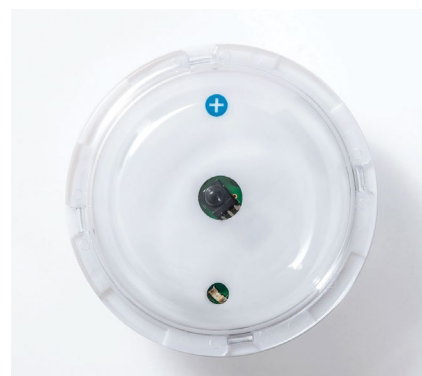
Wired and wireless network options to achieve your goals

What level of locating precision do you need? Midmark RTLS provides both precise and general locating designed to suit your specific goals.

BEGIN WITH WI-FI, REFINE WITH INFRARED.

Maximize your existing IT investment by leveraging a Cisco® infrastructure to identify the general location of tagged assets throughout your hospitals.

In areas where the precise location of equipment is necessary (e.g., patient rooms or supply closets for PAR level alerting), install infrared (IR) sensors, available in both wired or battery-powered options.



WIRED SENSORY NETWORK

High precision. Discreet IR and radio frequency (RF) sensors. Once installed, little to no maintenance is required.

- Sensor size: 2.75"W x 1"D
- Low cost sensor that offers highest location precision
- Our most widely deployed high frequency sensor (in its fifth generation)
- Easily achieves room-, bed- and chair-level accuracy

WIRELESS SENSORY NETWORK

Easy to install, battery-powered IR sensory network. No wiring necessary.

- Sensor size: 6"W x 2.625"D x 5"H
- Transmits location data without burdening your Wi-Fi network
- Battery-operated sensors (uses three standard D Cell batteries; up to 3 years typical battery life)
- Easy sensor installation with no wiring required
- Easily achieves room-, bed- and chair-level accuracy

WI-FI LOCATING

Combine wired or wireless sensors with your Cisco® Wi-Fi network for economic, scalable and effective real-time locating.

- Wi-Fi Asset Tag emits both Cisco CCX and infrared locating signals
- Compatible with later versions of Cisco MSE, CMX and DNA Spaces
- Cisco environment must be licensed and calibrated for Locating Services
- Achieves general location accuracy (zone-level)

A simple and powerful design for reliable locating

Finding equipment for patient care has never been easier than with our line of Asset Tags, all powered by RTLS.



LEVERAGE WI-FI FOR ENTERPRISE VISIBILITY WITH OUR WI-FI ASSET TAG.

The Wi-Fi Asset Tag combines IR and Wi-Fi RTLS for hospital-wide visibility, plus precision where you need it.

- Size: 1.6"W x 0.7"D x 1.4"H
- Weight: 1.0 oz with battery
- Ingress Protection: IP67 dust and moisture resistance
- Battery: Murata CR2477X lithium coin cell
- CCX Frequency: 802.11 (2.4 GHz)
- Battery Life: Up to 18 months



PRECISE LOCATING IN TWO DISTINCT SIZES.

The Asset Tag and Mini Asset Tag offer reliable IR RTLS technology for room-level (or better) accuracy.



ASSET TAG

- Size: 2.41"W x 0.563"D x 1.375"H
- Weight: 0.9 oz with battery
- Ingress Protection: IP53 water/dust sealed
- RF Frequency: 433 MHz; IR Wavelength: 875 nm, 455 kHz
- Battery: Murata CR2477X lithium coin cell
- Battery Life: Up to 2 years depending on time in motion



MINI ASSET TAG

- Size: 1.75"W x 0.725"D x 1.25"H
- Weight: 0.8 oz with battery
- Ingress Protection: IPX6 moisture resistance
- RF Frequency: 433 MHz; IR Wavelength: 875 nm, 455 kHz
- Battery: Murata CR2477X lithium coin cell
- Battery Life: Up to 2 years depending on time in motion



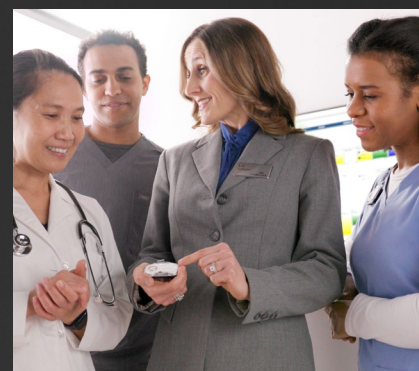
What you get with Midmark

SUCCESS COACHING + EXPERT PROJECT MANAGEMENT



Our Success Coaches are with you every step of the way, pre-sale to post-go live, helping you with decision making, change management and process improvement using RTLS data. They'll work together with our highly knowledgeable, PMP-certified implementation team, using a proven methodology for successfully deploying Midmark RTLS in the clinical environment.

COMPREHENSIVE EDUCATION, IN-PERSON + VIRTUAL



An experienced nurse educator from our Clinical Solutions Consulting team will conduct onsite training for super users on best practices for tagging assets, using software and running reports. We also provide a three-day System Analyst Training class at our Education Center in Michigan that will enable your team to support your Midmark RTLS through go-live and beyond. In addition, on-demand virtual tutorials are available through our online knowledge base.

EXTENSIVE, TIME-TESTED WORKFLOW EXPERTISE



Our Asset Tracking + Management solution has helped countless hospitals around the US proactively manage asset inventories and improve equipment utilization. Midmark RTLS provides the proven expertise that your hospital needs to effect positive change using accurate, reliable technology.



Additional products to consider

HEALTHCARE SYSTEMS INTERFACES

Create a seamless healthcare ecosystem by interfacing Midmark RTLS with your computerized maintenance management system (CMMS) and other healthcare systems, such as temperature monitoring, nurse call and patient engagement.

midmark.com/interfaces

SUCCESS COACHING

Using data, insight, experience and technology, the Midmark Success Coaching team helps you rethink and refine your asset inventory replenishment models to improve equipment utilization. Our Success Coaches can help you leverage data collected via the Midmark RTLS to make valuable process improvements.

midmark.com/consulting

SCALABLE SOLUTIONS

In the hospital setting, Midmark RTLS can do much more than locate equipment. Protect and empower nursing and other staff with Staff Assist (mobile panic button) and optimize workflow in the ED, OR and throughout the hospital. Each of these solutions is a perfect complement to Asset Tracking + Management.

midmark.com/safety-solutions
midmark.com/acute-workflow-solutions



Designing better care.®

Midmark RTLS is an ISO 9001 Certified Company.

For more information or a demonstration, contact 1.800.MIDMARK, or call Midmark RTLS directly at 1.877.983.7787. Visit our website at midmark.com.

Midmark RTLS products and solutions are provided by Midmark RTLS Solutions, Inc., a wholly-owned subsidiary of Midmark Corporation.

Cisco is a registered trademark of Cisco Systems, Inc.

© 2022 Midmark RTLS Solutions, Inc., Traverse City, Michigan USA
Products subject to improvement changes without notice.
Litho in USA.

007-10177-00 Rev. C1 (6/22)

