



Anesthesia Vision Block Screen [9A78]

Special Tools:
none

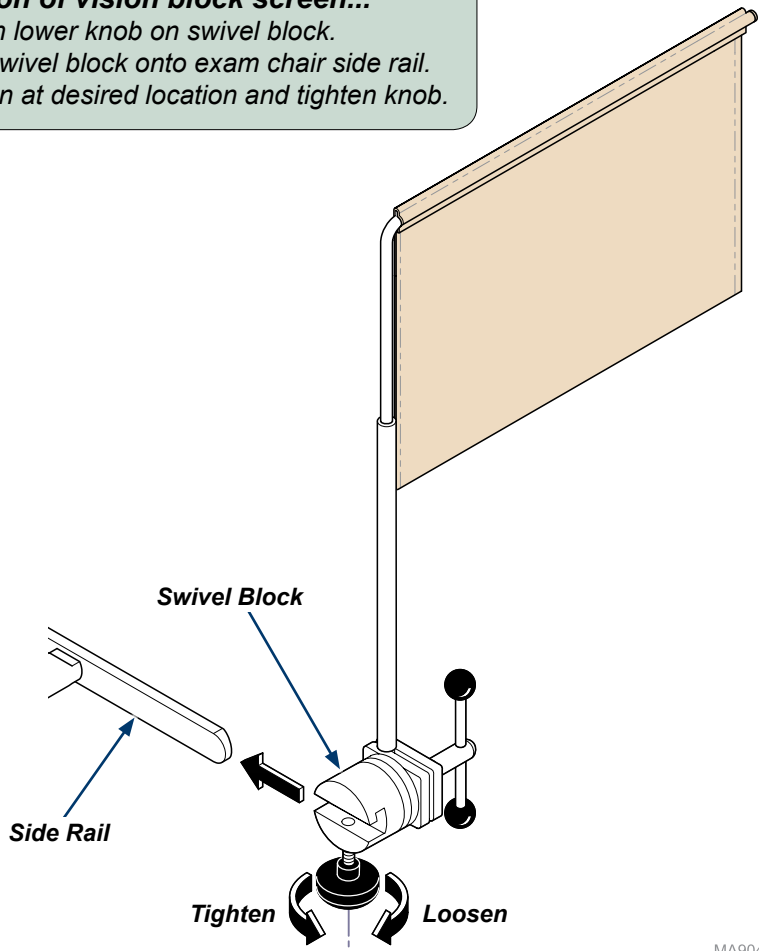
Language of origin: English

Intended Use:
To obscure patient's vision of a general procedure / examination.

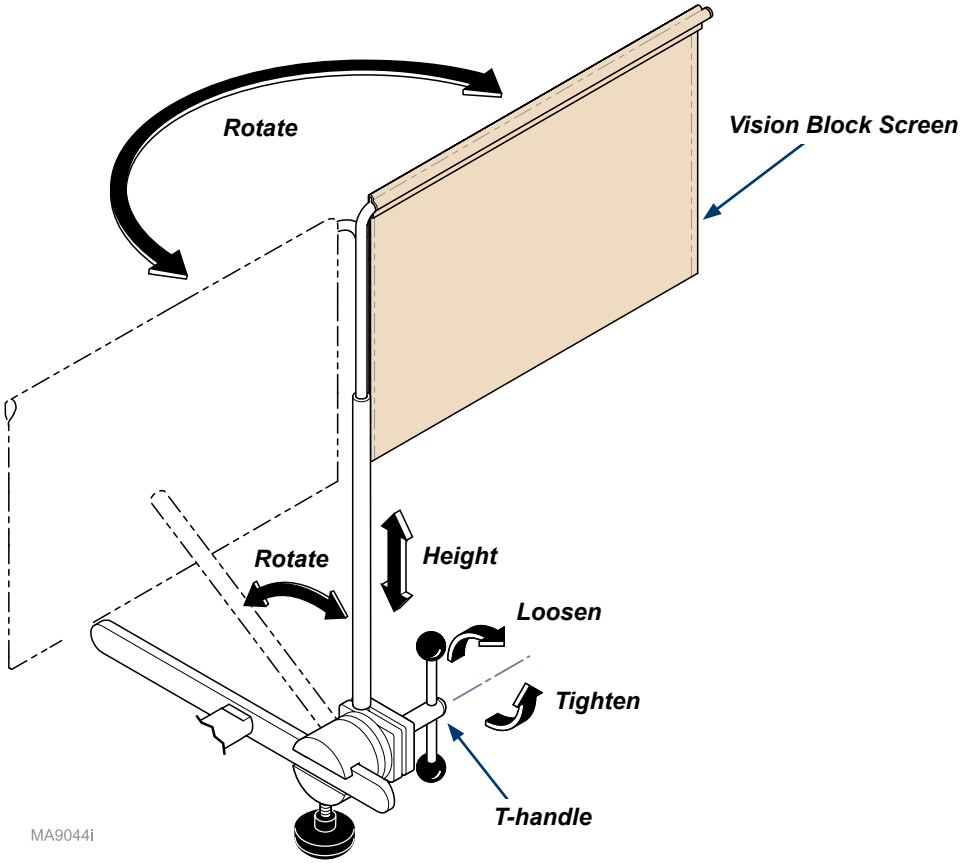
Caution
Assure chair is clear of any obstacles that may interfere with the operation of the vision block screen.

Note
The vision block screen works with both Midmark® accessory rail and surgical rail.

Installation of vision block screen...
A) Loosen lower knob on swivel block.
B) Slide swivel block onto exam chair side rail.
C) Position at desired location and tighten knob.



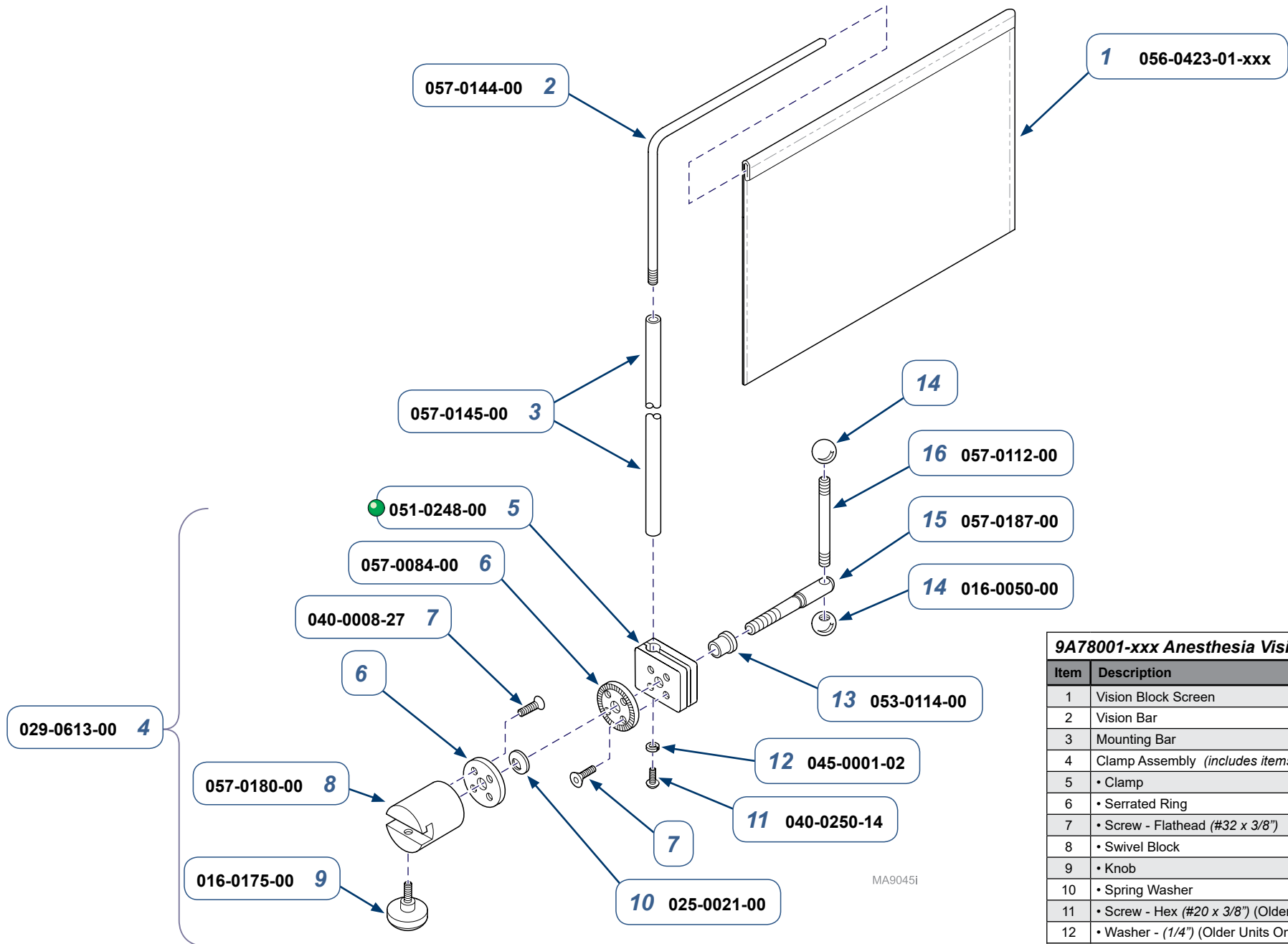
MA9043i



MA9044i

Operation of vision block screen...
A) Support vision block screen and loosen T-handle.
B) Position screen to desired height and angle.
C) Tighten T-handle.

TP200 Rev. A



9A78001-xxx Anesthesia Vision Block Screen

Item	Description	Qty.
1	Vision Block Screen	1
2	Vision Bar	1
3	Mounting Bar	1
4	Clamp Assembly (includes items 5 thru 16)	1
5	• Clamp	1
6	• Serrated Ring	2
7	• Screw - Flathead (#32 x 3/8")	8
8	• Swivel Block	1
9	• Knob	1
10	• Spring Washer	6
11	• Screw - Hex (#20 x 3/8") (Older Units Only)	1
12	• Washer - (1/4") (Older Units Only)	1
13	• Nylon Bearing	1
14	• Knob	2
15	• Handle Mount	1
16	• Handle	1

Serial Numbers / Dates: all