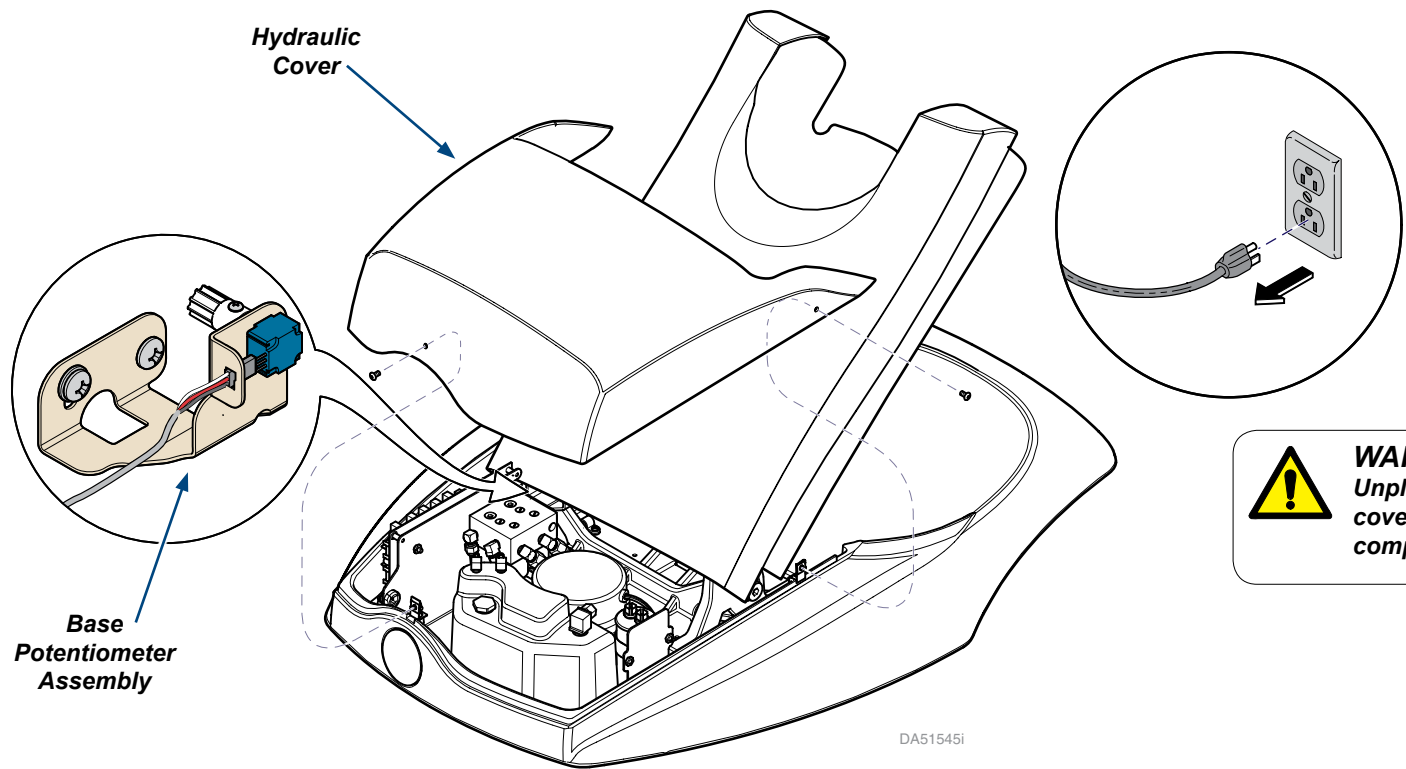


Base Potentiometer Assembly Installation (002-10317-00)

Components:	
Potentiometer Assembly.....	1
Installation Instructions.....	1
Special Tools:	
none	



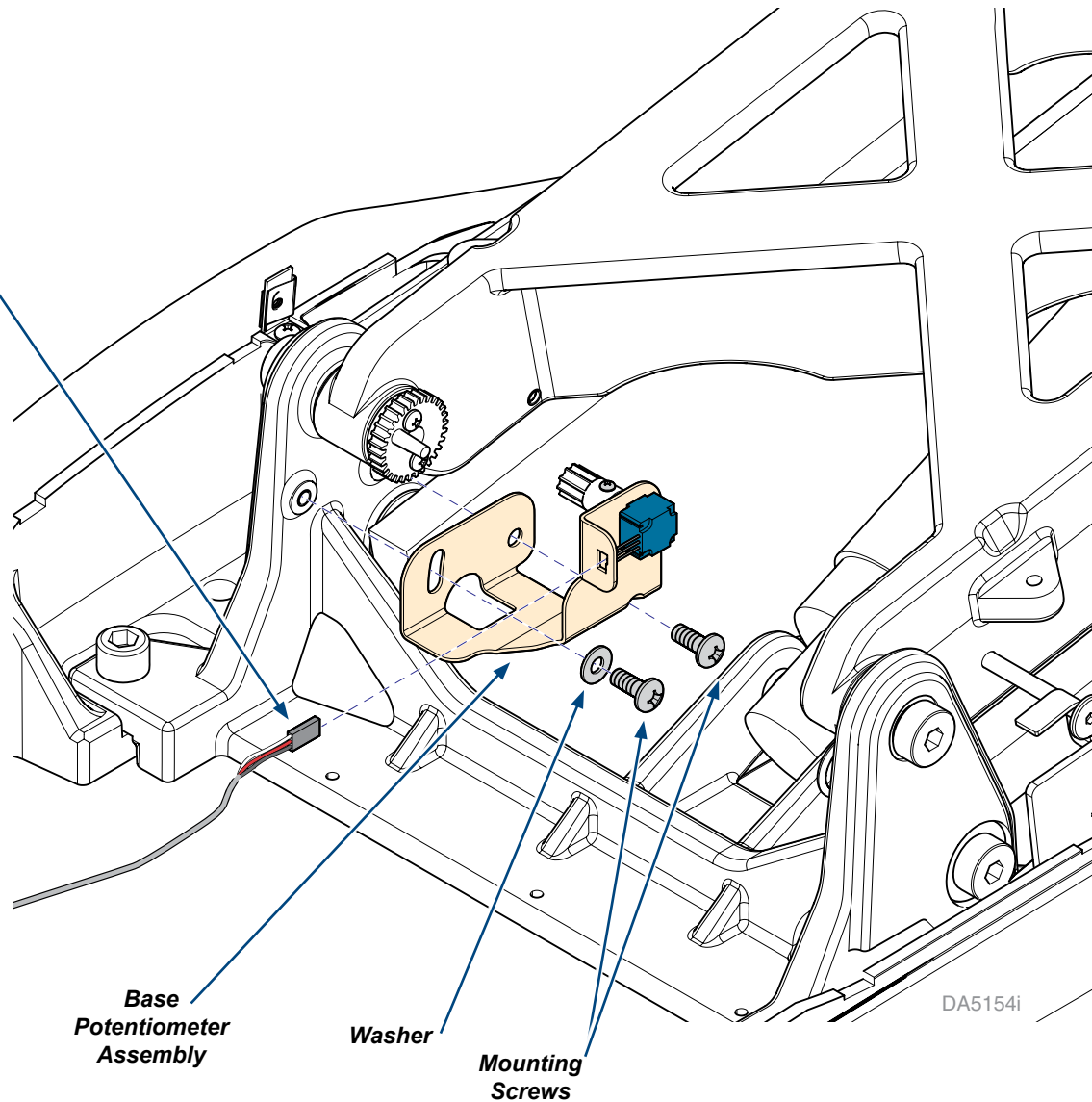
WARNING
 Unplug chair power cord before removing covers or working on chair. Failure to comply could result in personal injury.

Step 1: Position Chair and Remove Hydraulic Cover.

- A) Position chair to desired height.
- B) Unplug chair from outlet.
- C) Remove Hydraulic Cover by removing three screws.
- D) Locate Base Potentiometer Assembly.

Note
 Pressing and holding Program Button on touch pad or foot switch while pressing a chair positioning arrow allows the chair to be positioned without a working potentiometer or on a uncalibrated chair.

Wire Harness Connector



Base
Potentiometer
Assembly

Washer

Mounting
Screws

DA5154i

Step 2: Base Potentiometer Assembly Removal and Installation.

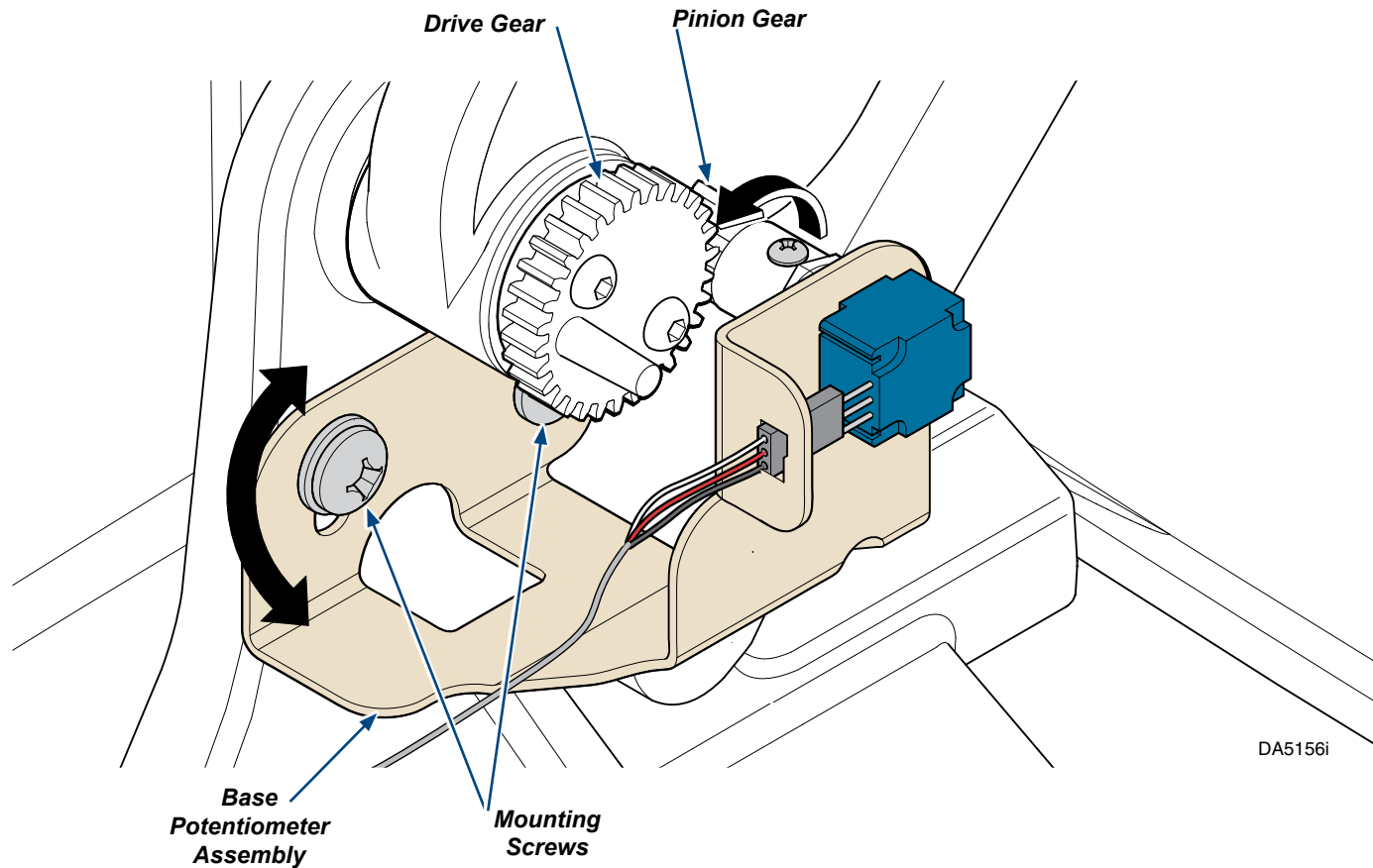
- A) Disconnect Wire Harness Connector from Base Potentiometer Assembly.
- B) Remove Base Potentiometer Assembly by removing two Mounting Screws and one Washer.
- C) Position New Base Potentiometer Assembly onto chair and secure loosely with two Mounting Screws and one Washer.
- D) Connect Wire Harness Connector to Base Potentiometer Assembly.

**WARNING**

Use caution to prevent electrical shock with chair plugged into outlet. Electrical components and connections are exposed.

**Equipment Alert**

Place chair base at its lowest position before performing adjustment procedures.



DA5156i

Step 3: Adjust New Base Potentiometer Assembly.

- A) Plug in chair and move chair base to its lowest position before performing adjustment procedures.
- B) Loosen Mounting Screws on Base Potentiometer Assembly and rotate assembly so Pinion Gear is disengaged from Drive Gear.
- C) Rotate Pinion Gear on potentiometer shaft counter-clockwise (viewed from back of potentiometer) until it stops. Align teeth on Pinion and Drive Gears.
- D) Turn the Pinion Gear back, (clockwise) two teeth and align with Drive Gear.
- E) Rotate Base Potentiometer Assembly so Pinion Gear is engaged with Drive Gear, tighten Mounting Screws.

Step 4: Calibrate chair.

- A) Unplug chair from outlet.
- B) Locate SW1 switch and record settings.
- C) Set both switches on SW1 to ON position.
- D) Plug in chair, then press the Calibration Button SW2.
- E) After calibration is complete unplug chair and place SW1 switches back to original positions. Plug in chair and check for proper chair operation using directional buttons on foot control or membrane switch.
- E) Install hydraulic cover.

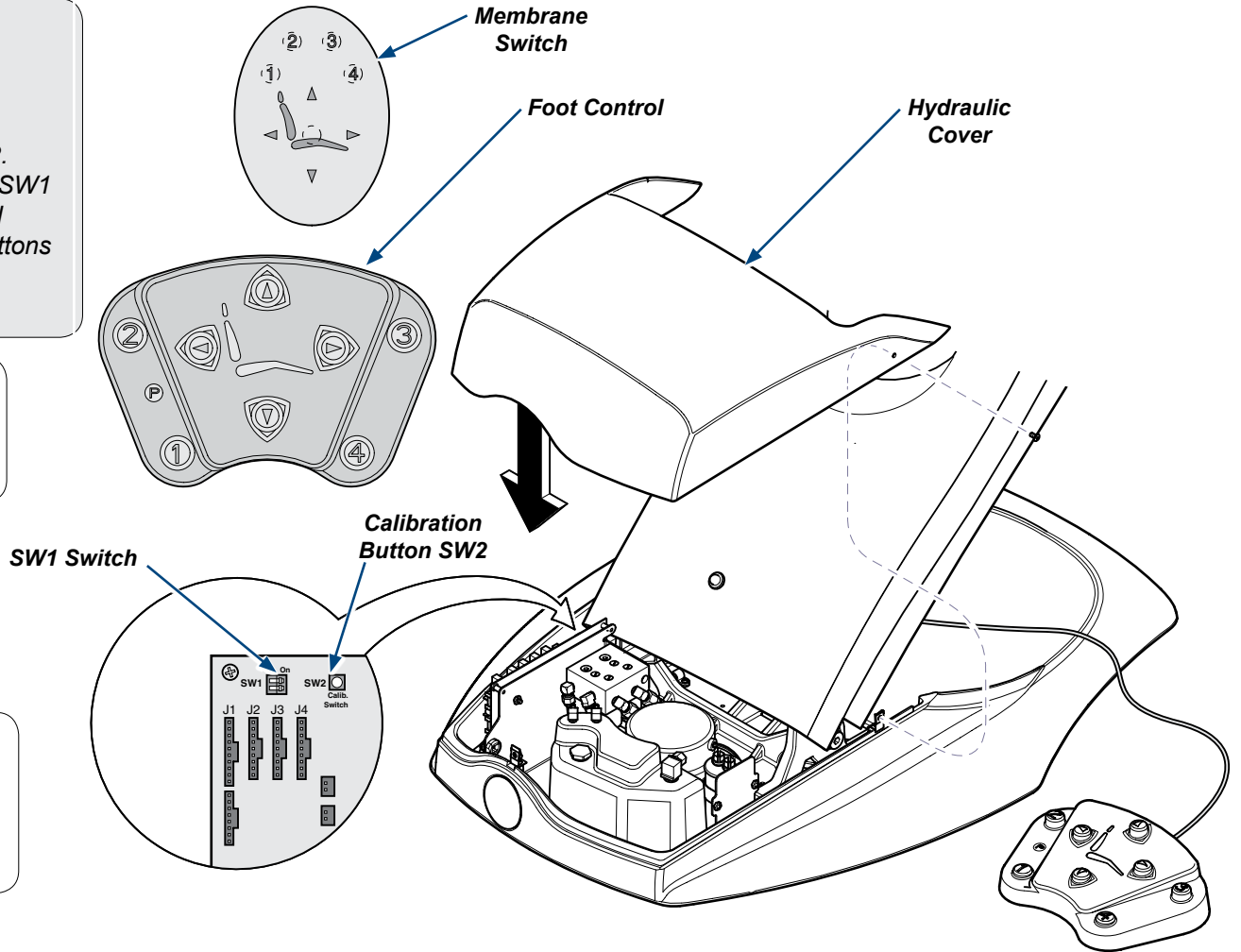


WARNING

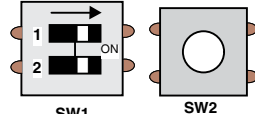
Use caution to prevent electrical shock with chair plugged into outlet. Electrical components and connections are exposed.

Note

Chair automatically completes two cycles during Calibration. **First Cycle** finds extreme end of travel of sensor settings. **Second Cycle** checks to assure settings have been stored and can be recalled by software.

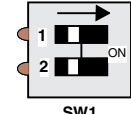


(Switch 1 & 2 ON)



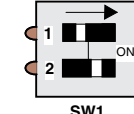
SW1 SW2
Calibration Mode

(Switch 1 & 2 OFF)



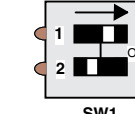
SW1
Normal Mode

(Switch 1 OFF, 2 ON)



SW1
Cuspidor Position Return Mode

(Switch 1 ON, 2 OFF)



SW1
Last Position Return Mode

DA5158i