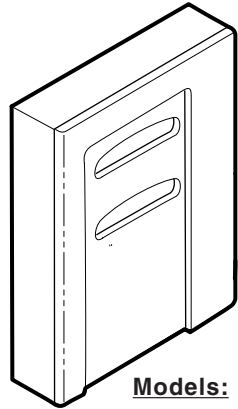


Dispenser Assembly Installation

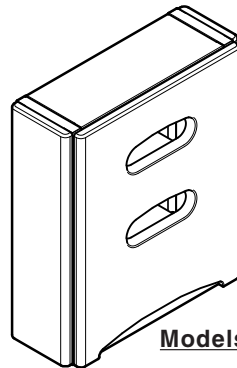


Special Tools

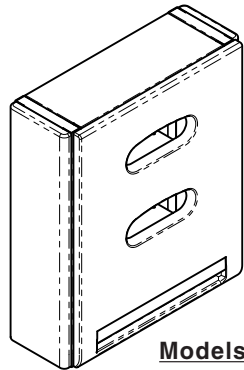
Level
Stud Finder



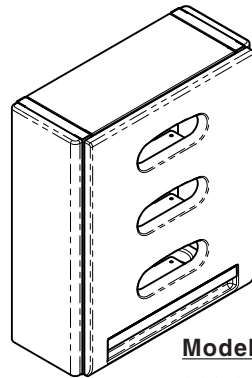
Models:
CS-ADS001



Models:
DM-ODC019-00x
CS-ADS001-xxx
OUC019D



Models:
662-001-XXX
662-002-XXX



Models:
662-003-XXX
662-004-XXX

DA172401i

Attention!

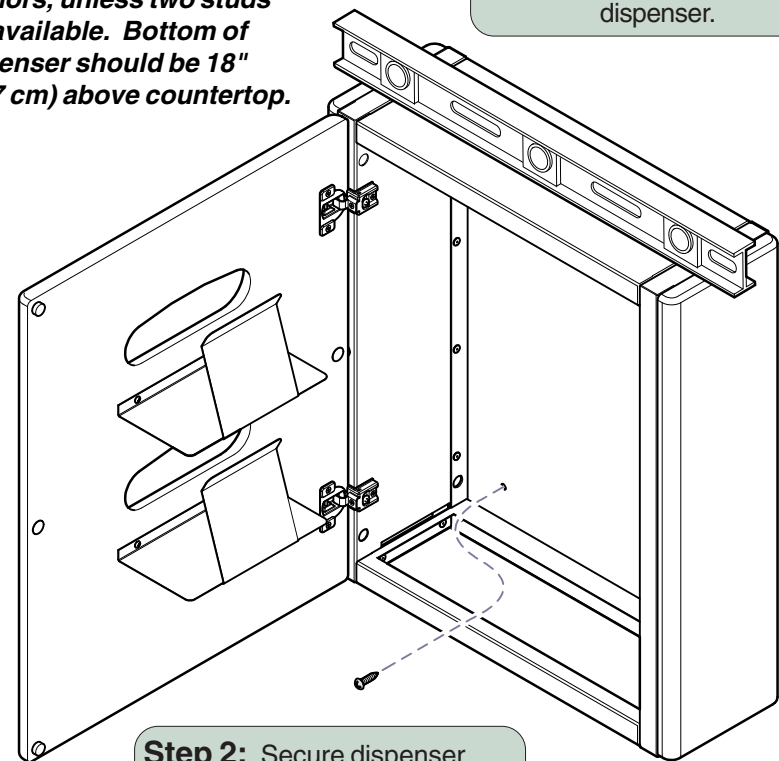
For **OSHPD** Regulated Installations, please go to www.midmark.com to download the appropriate OSHPD Pre-Approval and Installation documents.

POSITIONING & LEVELING

NOTE:

Midmark recommends centering dispenser above sink using appropriate wall anchors, unless two studs are available. Bottom of dispenser should be 18" (45.7 cm) above countertop.

Step 1: Position and level dispenser.



Step 2: Secure dispenser cabinet to wall with appropriate fasteners.

DA143000i

DOOR ADJUSTMENTS

Depth Adjustment

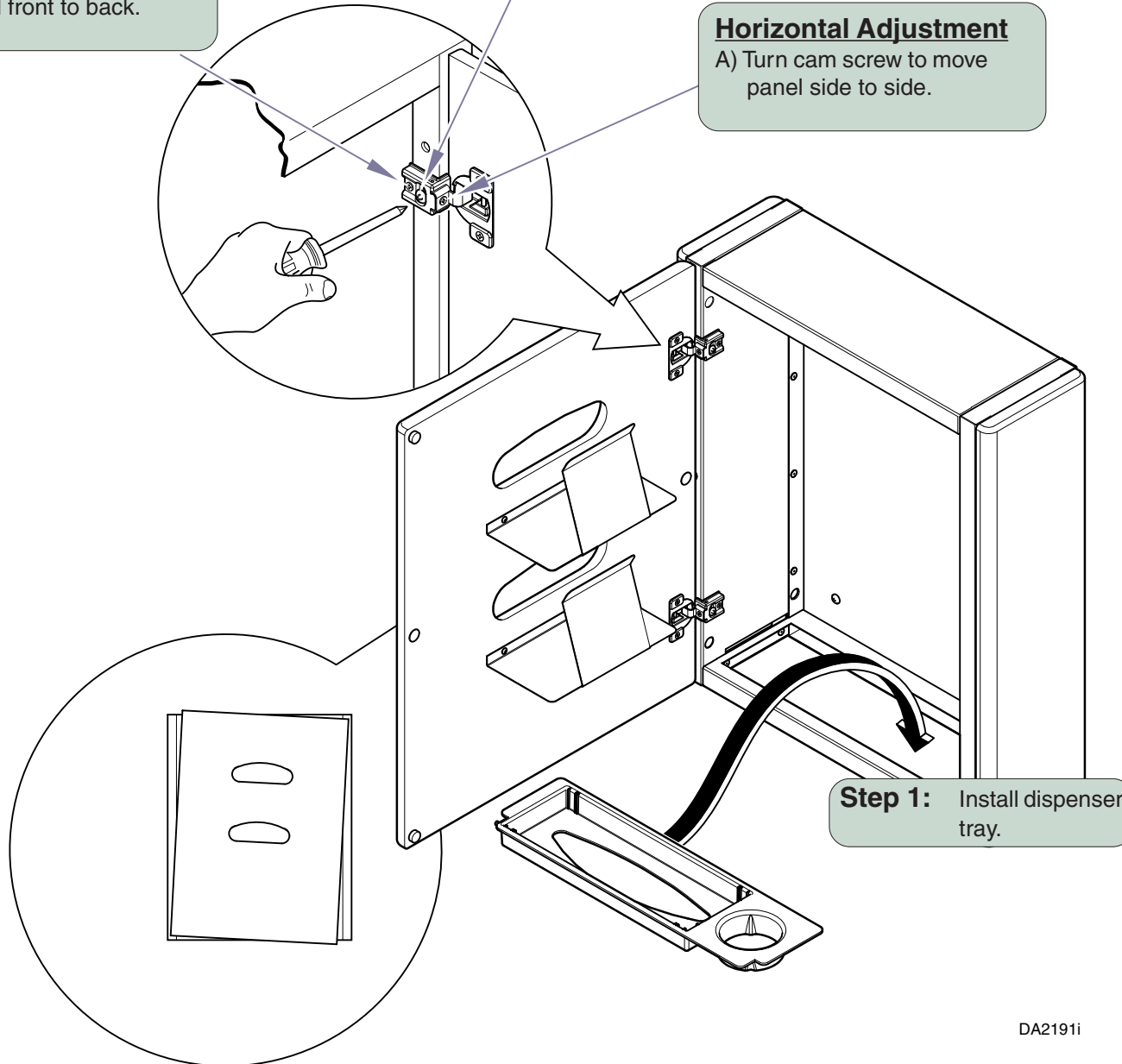
- A) Turn cam screw to move panel front to back.

Vertical Adjustment

- A) Loosen both screws.
- B) Move up or down.
- C) Retighten screws.

Horizontal Adjustment

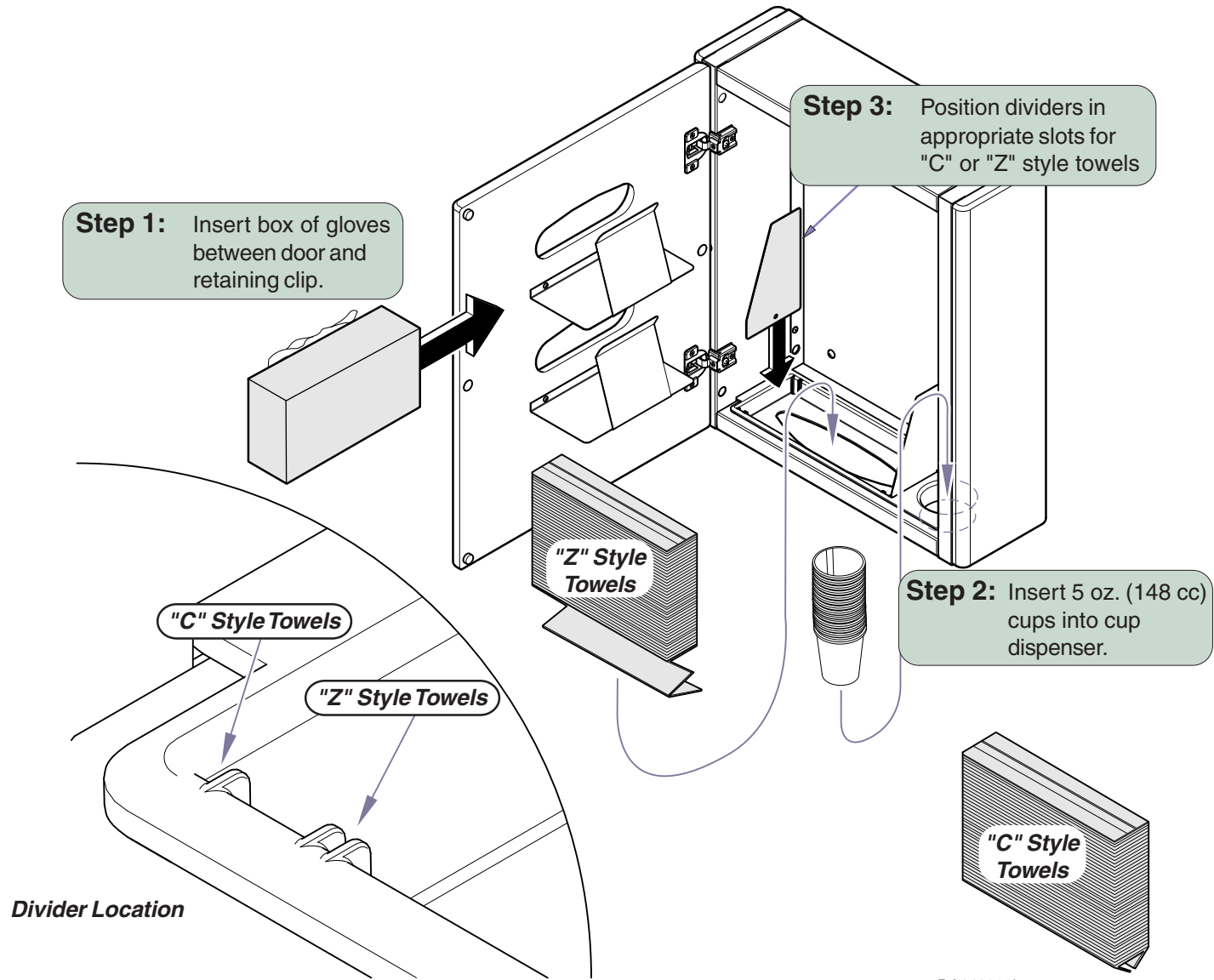
- A) Turn cam screw to move panel side to side.



Step 1: Install dispenser tray.

DA2191i

FILLING DISPENSER



DA143200i