

Caster Base [9A330]

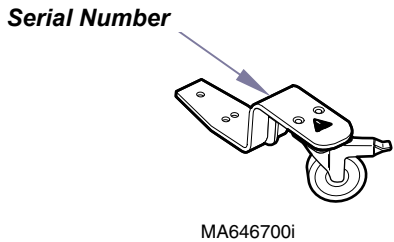
Contents:
Installation 1
Exploded View 3

Special Tools:
4" x 4" x 24" support

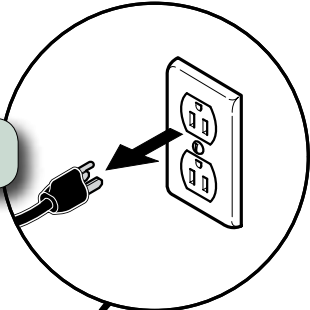
Intended Use:
To make exam chair mobile.

Restrictions:
Do not install casters on chairs with rotational base.
Do not use in conjunction with:
Knee Crutches (9A144 / 9A208 / 9A410 / 9A411)
24" Wide Foot Pad (9A337 / 9A341 / 9A344 / 9A345 / 9A421)

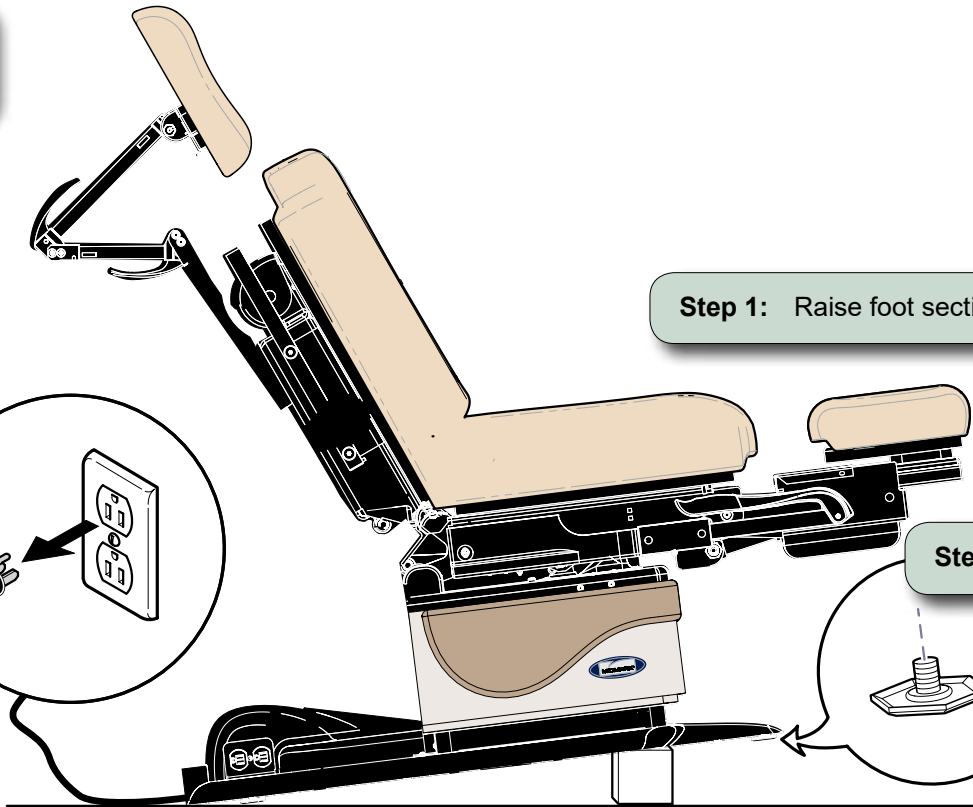
 **Caution**
To prevent injury, always lock casters before performing any procedure.



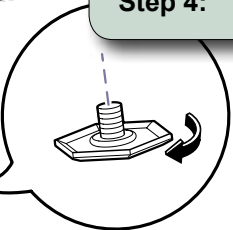
Step 2: Unplug power cord.




Step 1: Raise foot section.



Step 4: Remove leveling screws.

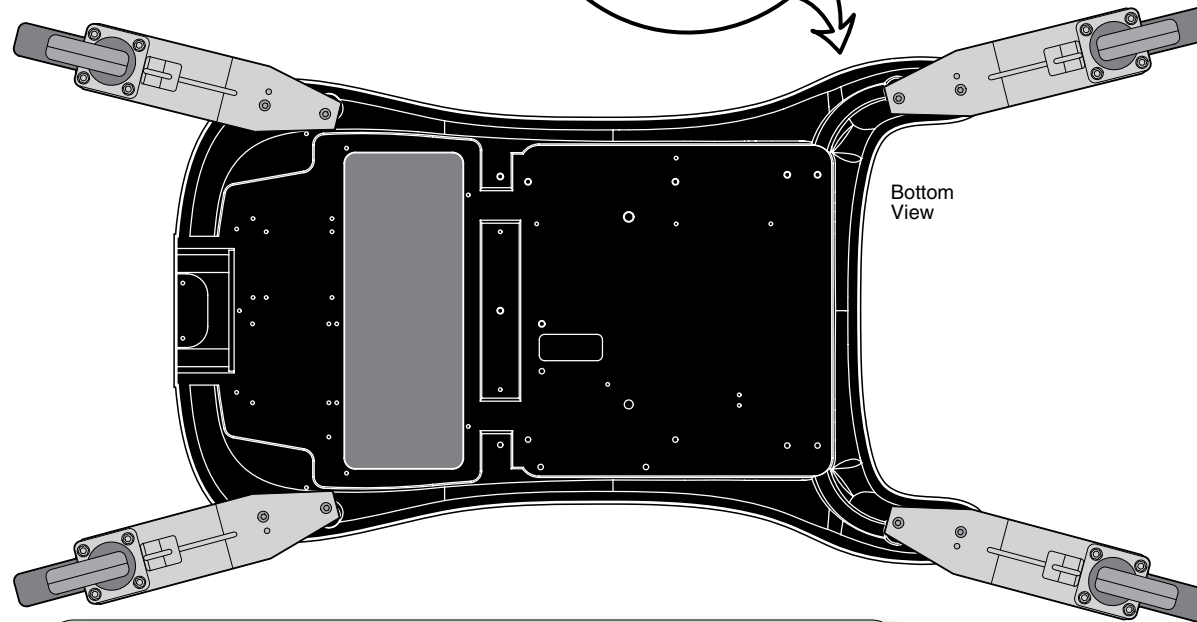
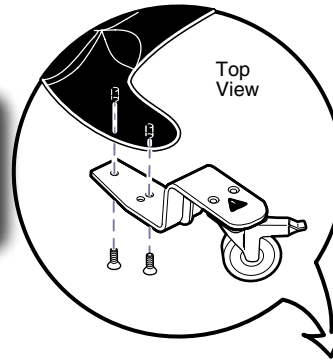


 **Caution**
To prevent injury, use an assistant when performing this step.

Step 3: Lift foot end of chair and position support under base.

Step 5: Position foot end casters and secure with two screws per caster.

Note: Casters must be angled outward as shown.

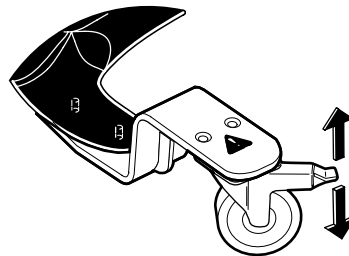


Caution

To prevent injury, lock foot end casters before performing Step 6.

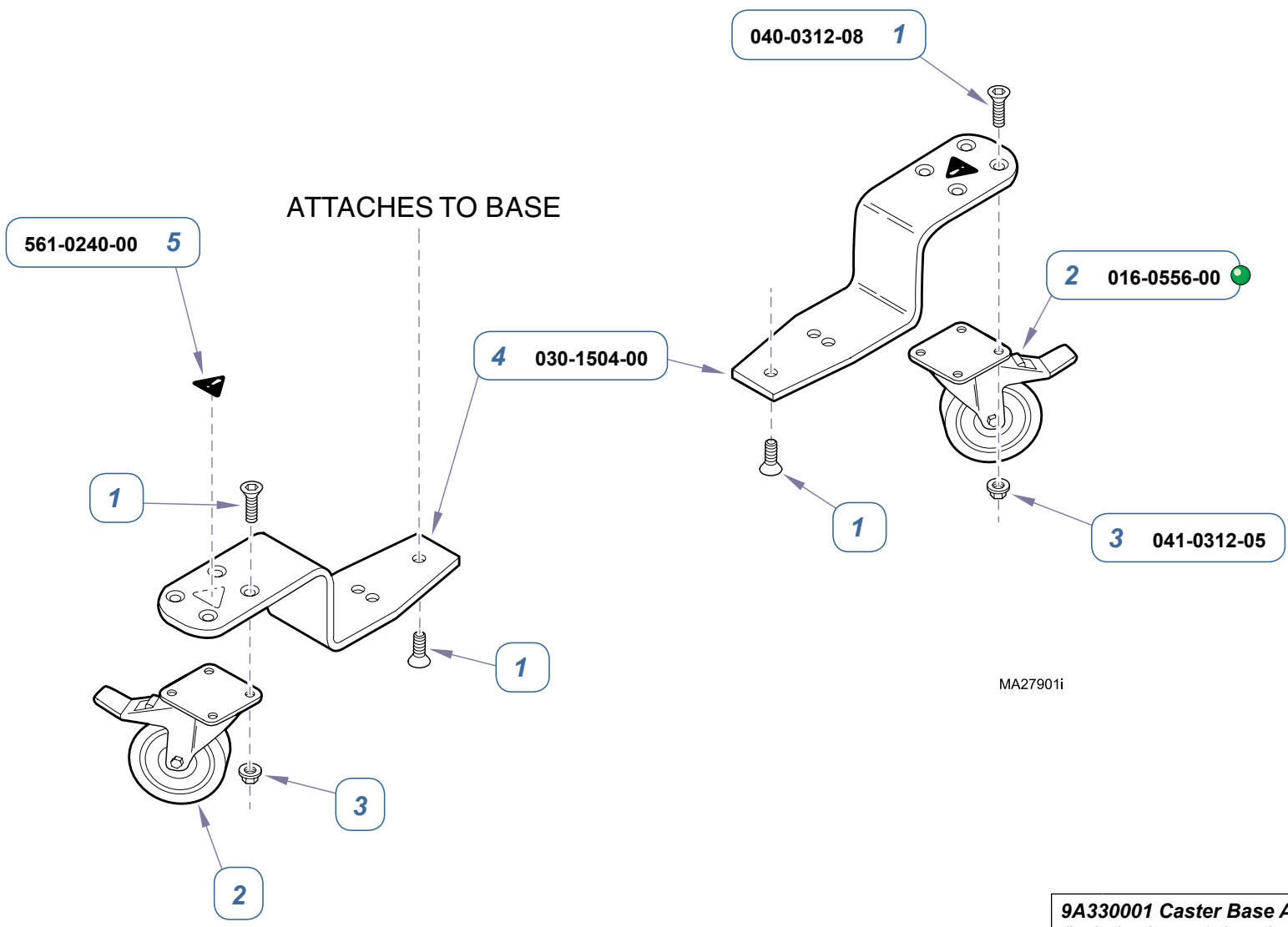
Step 6: Position support under head end of base. Install head end casters (same procedure)

MA645701i



To UNLOCK caster(s)...
Lift up on brake pedal.

To LOCK caster(s)...
Press down on brake pedal.



9A330001 Caster Base Assembly
(includes items 1 thru 7)

Item	Description	Qty.
1	• Screw	24
2	• Locking Caster	4
3	• Nut	16
4	• Bracket Weldment	4
5	• Safety Alert Decal	4
6	• Installation Instructions (<i>not shown</i>)	1
7	• Allen Wrench - 3/16" (<i>not shown</i>)	1

Serial Numbers / Dates: all