

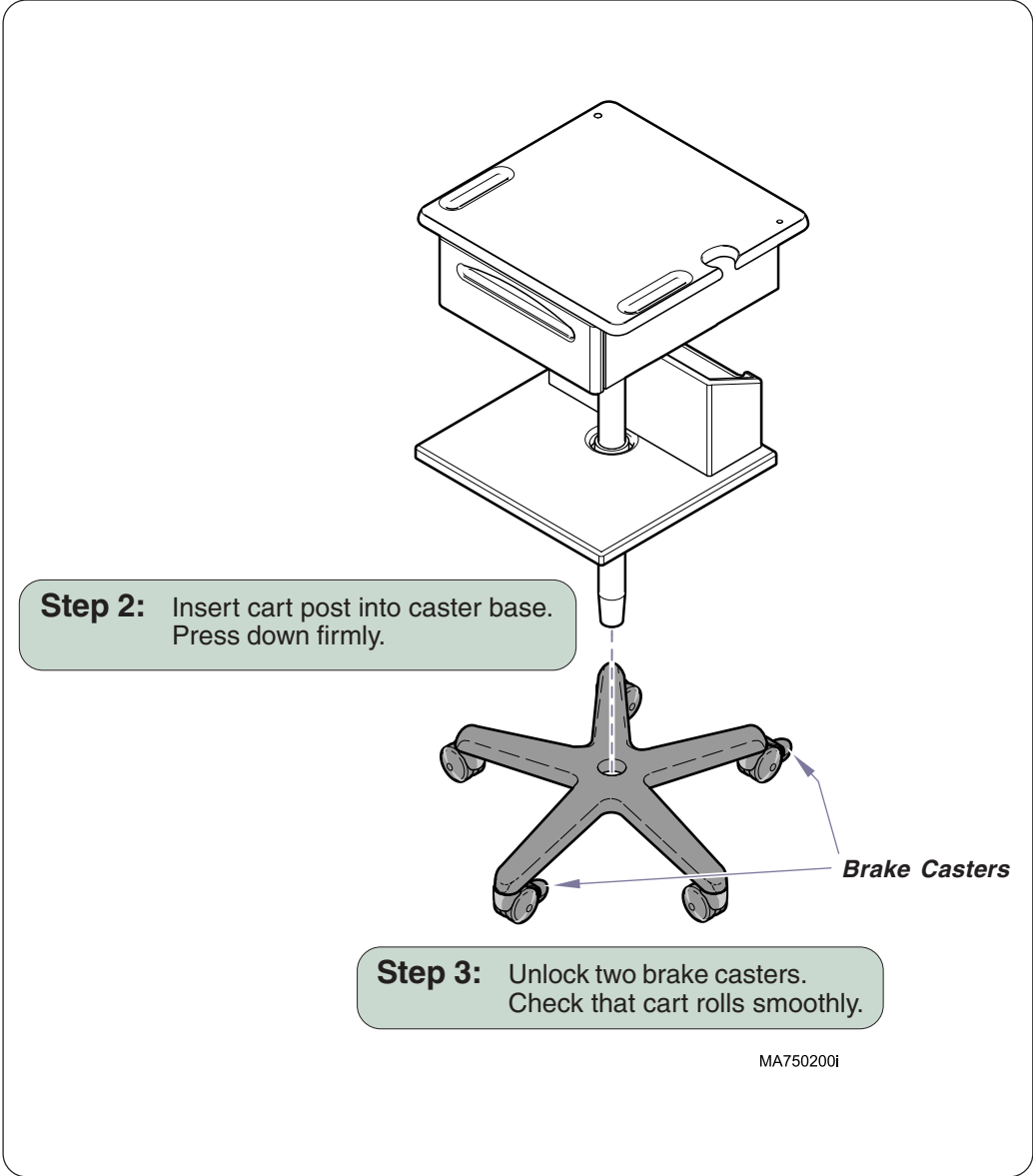
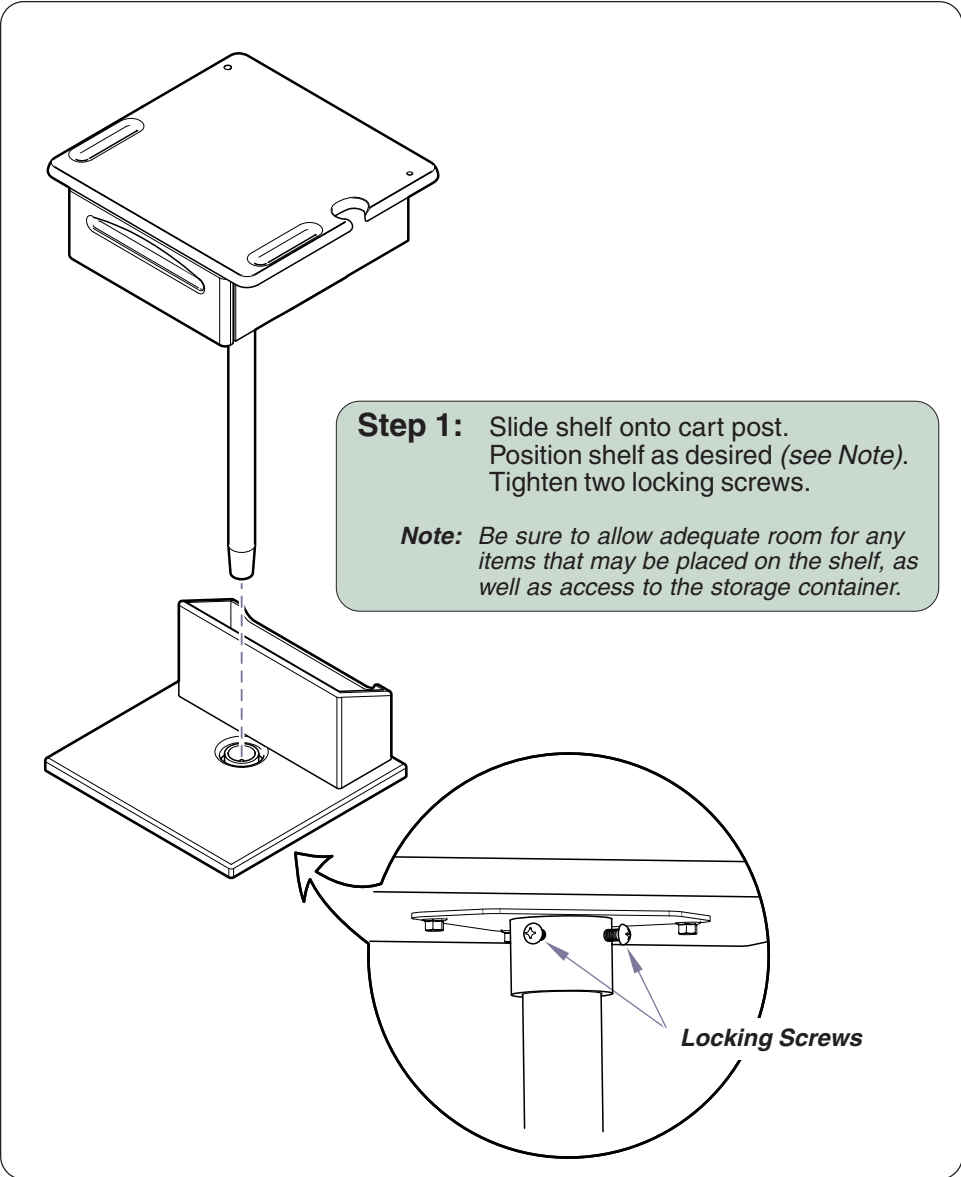


Diagnostic Cart Installation

Applies to Models:
667 (all)

Special Tools:
none

Attention:
Maximum weight capacity of the drawer is 80 lbs (36.2 kg).
Maximum weight capacity of the top (centered) is 40 lbs (18.1 kg).



Step 4: Place the acquisition holder in position. Secure with washer & bolt.

Note: The acquisition holder can be mounted on the left or right rear corner. If necessary, remove the hole plug and place it in the unused hole.

Plungers



Equipment Alert

Be sure the ECG module engages the two spring-loaded plungers in the acquisition holder. The plungers provide friction to hold the module in place.

Step 5: Insert IQmark™ ECG module into acquisition holder as shown.

Hole Plug

Velcro



Equipment Alert

Adhesive backed velcro is supplied to secure printer to shelf. Failure to secure the printer may result in equipment damage.

MA750300i