

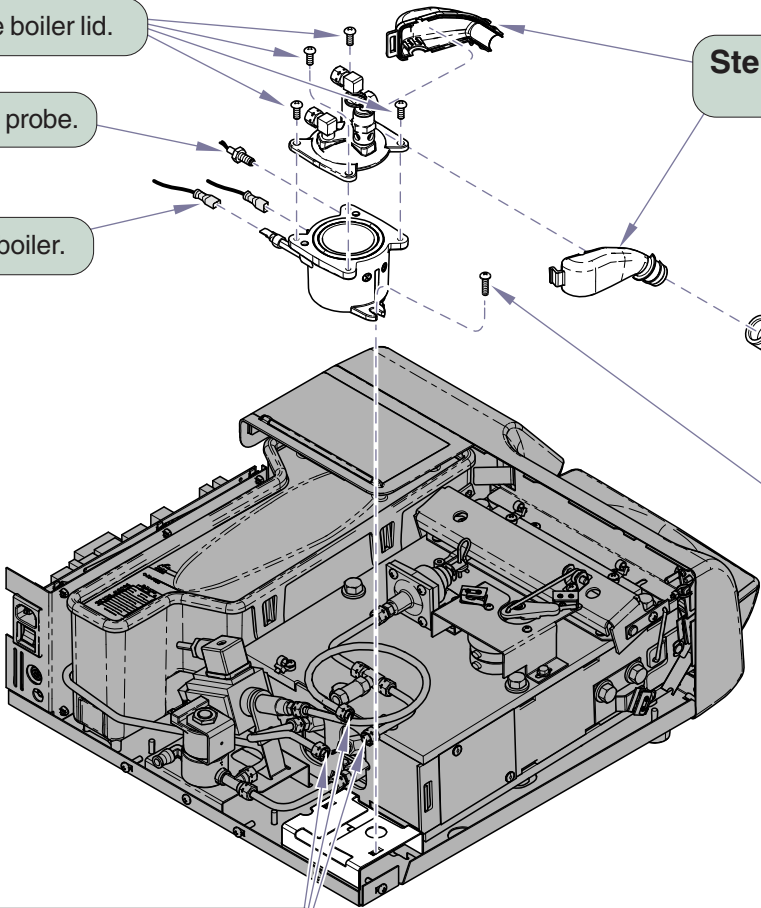
# Boiler Installation Sheet [002-1052-0x]

**Components:**  
Boiler assembly .. 1

**Special Tools:**  
none



**Caution:**  
Always disconnect power to sterilizer before removing cover. Allow sterilizer to cool then drain reservoir.



**Step 5:** Remove boiler lid.

**Step 6:** Remove temperature probe.

**Step 3:** Remove wiring from boiler.

**Step 4:** Remove Pressure Relief Valve Enclosure.

**Equipment Alert**  
Pull ring on relief valve to release any pressure in chamber.

**Step 1:** Remove pressure relief hose.

**Step 7:** Remove two screws. Then remove boiler from bracket.

**Step 2:** Disconnect copper tubes and neoprene tube from boiler.

**Installation:** Reverse steps for installation.