

# Boiler Assembly Installation Sheet [002-1081-0x]

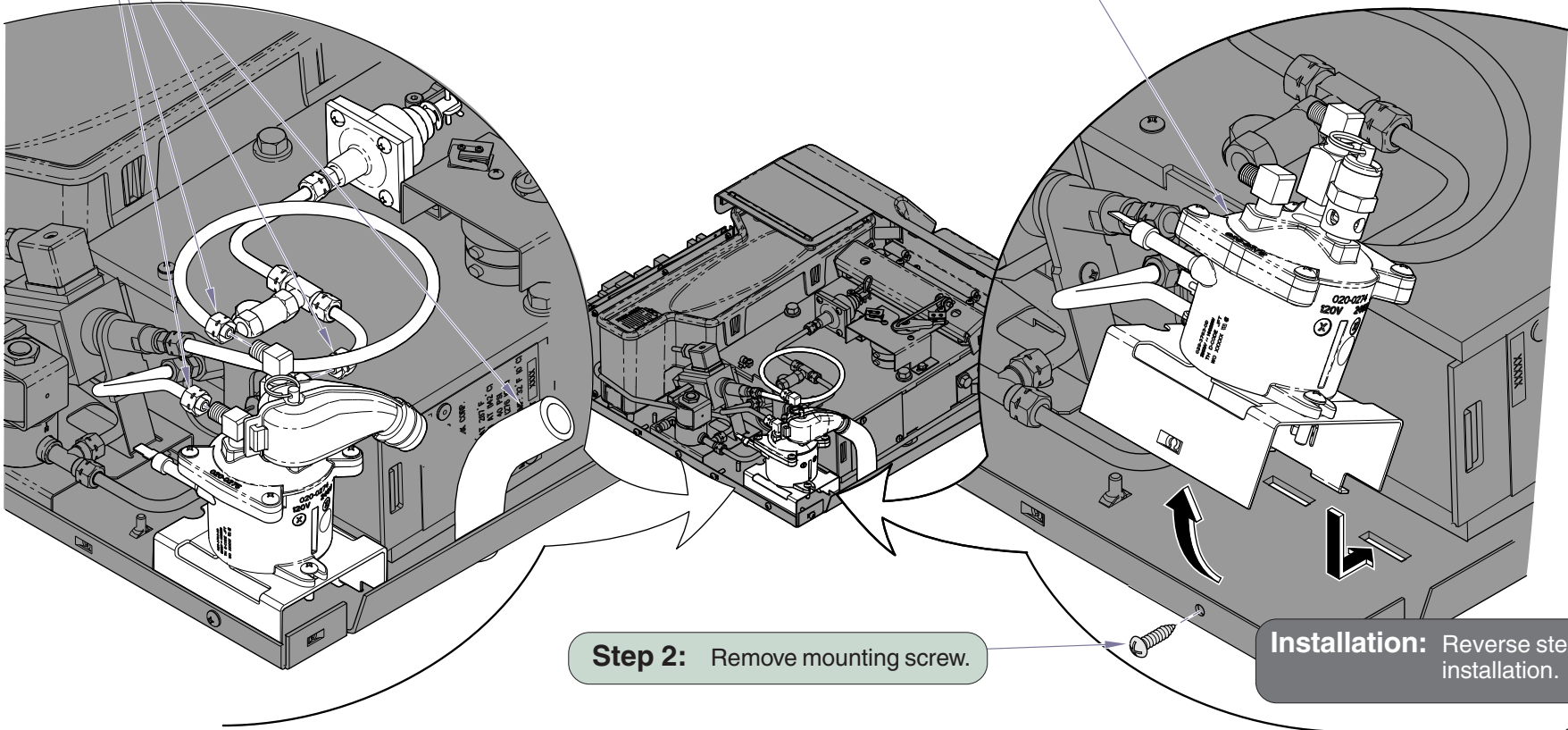
**Components:**  
Boiler

**Special Tools:**  
none

**Caution:**  
Always disconnect power to sterilizer before removing cover. Allow sterilizer to cool then drain reservoir.

**Step 1:** Disconnect all tubes, wires and hoses from boiler.

**Step 3:** Angle boiler assembly and remove from base.



**Step 2:** Remove mounting screw.

**Installation:** Reverse steps for installation.