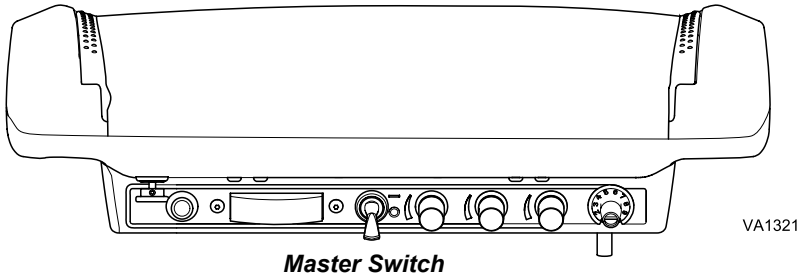




Coolant Water Flush Valve [002-1188-00]

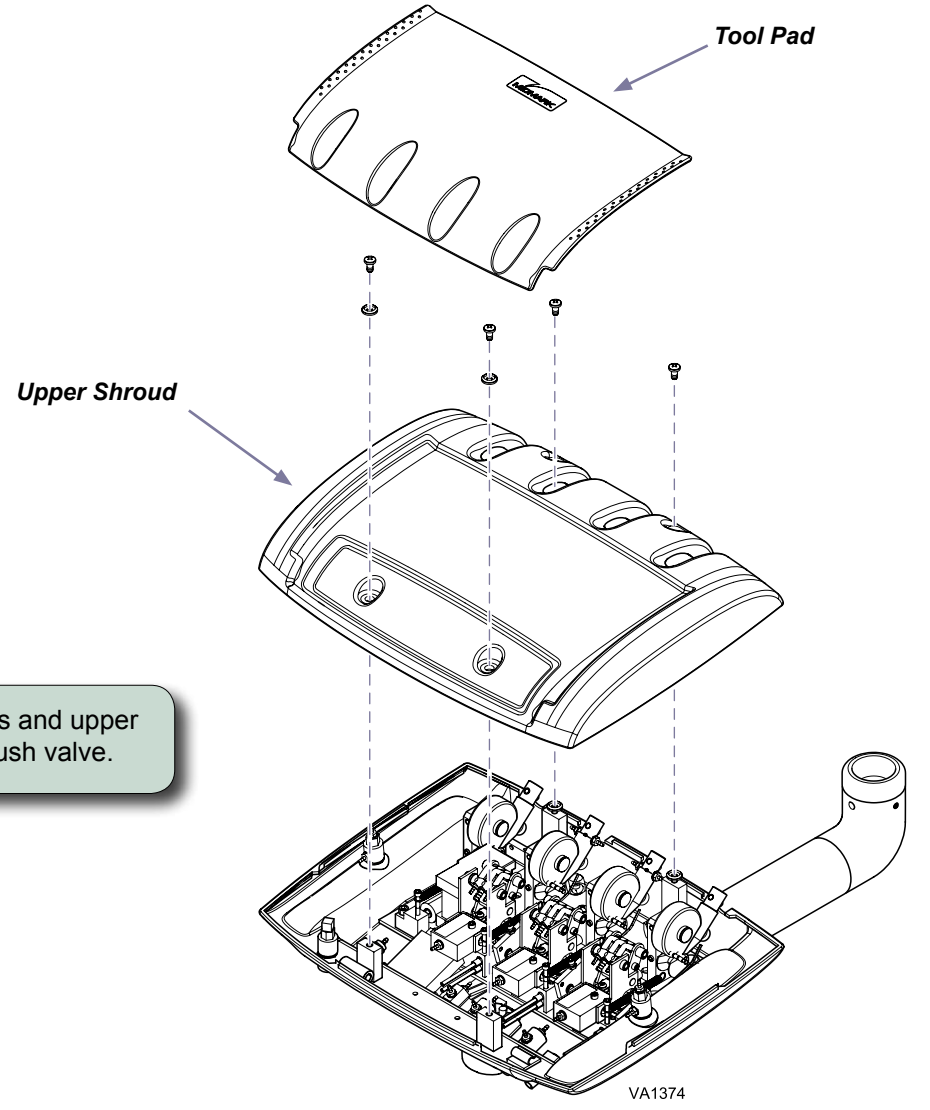
Components:
Control Valve 1

Special Tools:
none



Step 1: Turn unit master switch OFF and remove tool pad.

Step 2: Remove four screws and upper shroud to access flush valve.



Step 3: Tag and disconnect tubing from flush valve.

Step 4: Loosen set screw and remove adjustment knob.

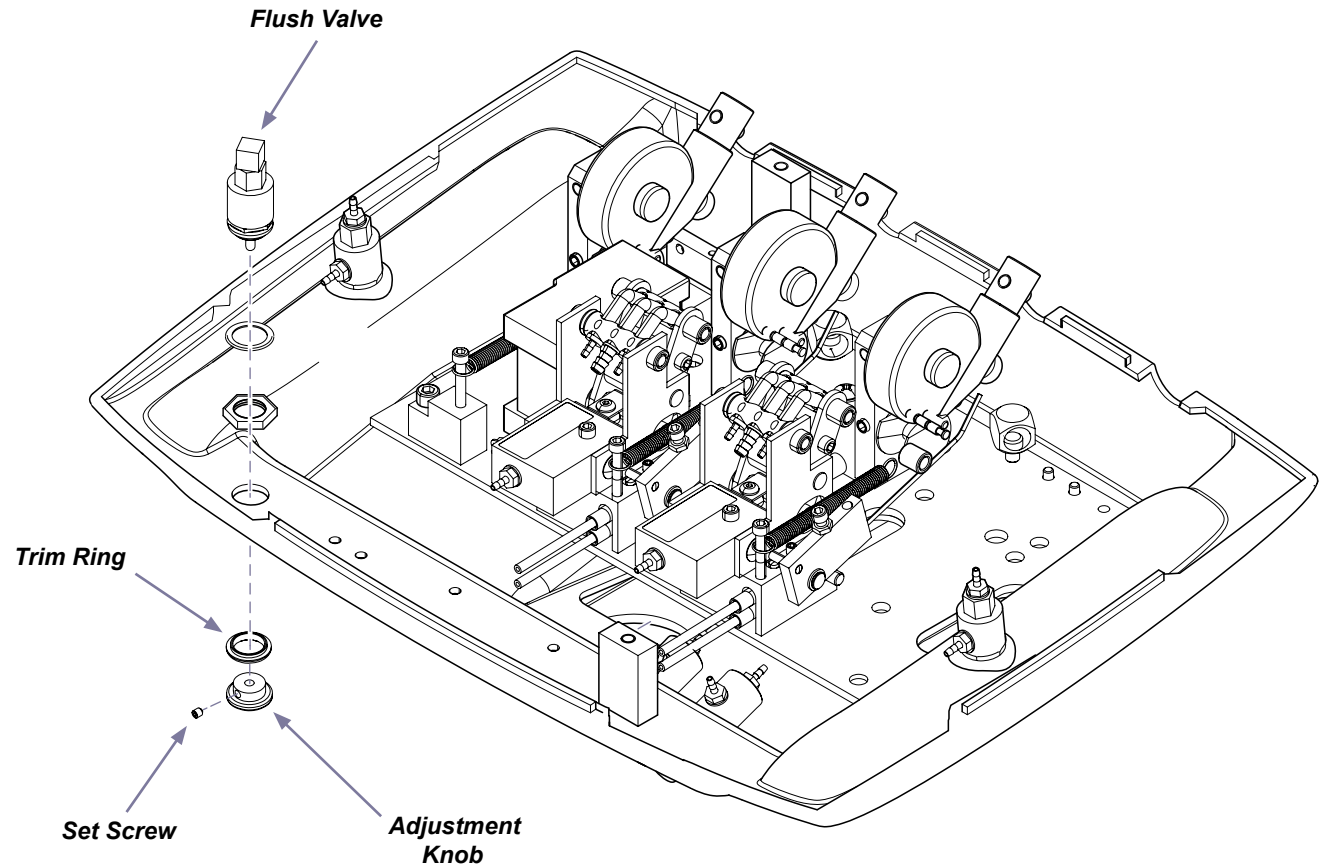
Step 5: Unscrew flush valve; remove valve, nut, washer, and trim ring.

Step 6: Insert flush valve thru washer and nut, then insert valve thru hole in housing and secure with trim ring.

Step 7: Install adjustment knob and tighten set screw.

Step 8: Reconnect tubing and reinstall upper shroud and tool pad.

Step 9: Turn unit master switch ON and check for proper operation.



VA1432