

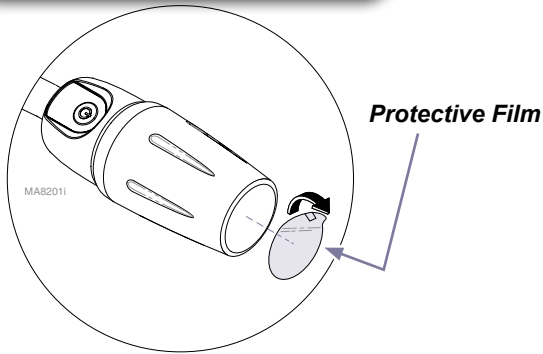


Caster Base [9A458, 9A628]

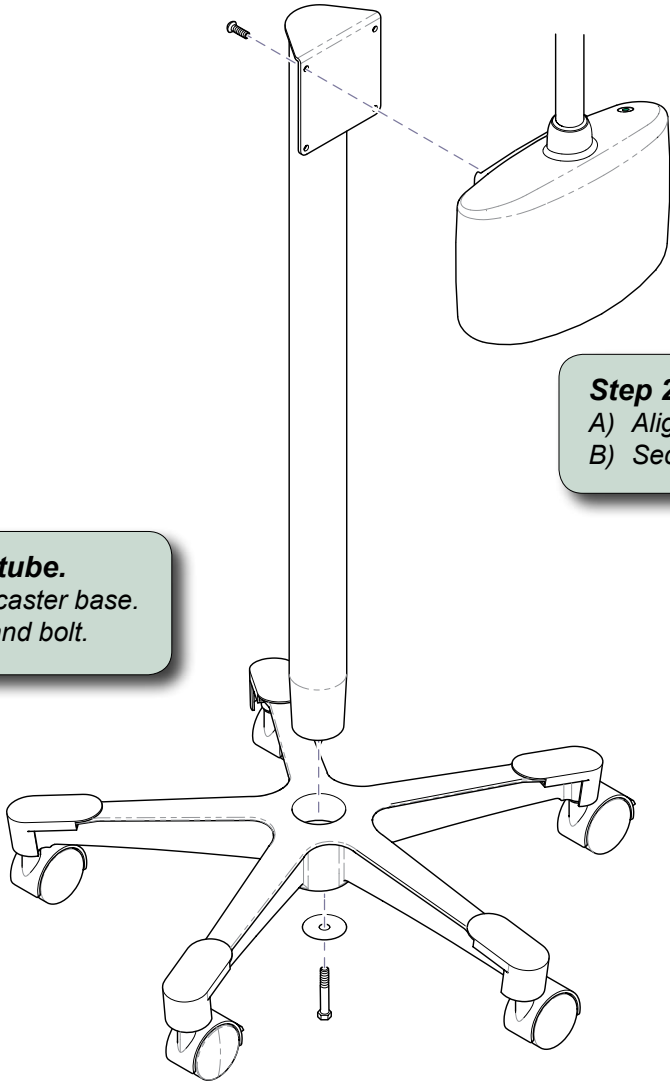
Compatible with:
Ritter 253 Exam Light

Intended Use:
To provide mobility for Ritter 253 exam light.

Before using light:
Remove protective film from lens.



Step 1: Install extension tube.
A) Press extension tube into caster base.
B) Secure tube with washer and bolt.



Step 2: Install light.
A) Align light with holes in mounting plate.
B) Secure light with four screws.

MA81931