

# Lighthouse Replacement Kit [002-1400-00, 002-10210-00]

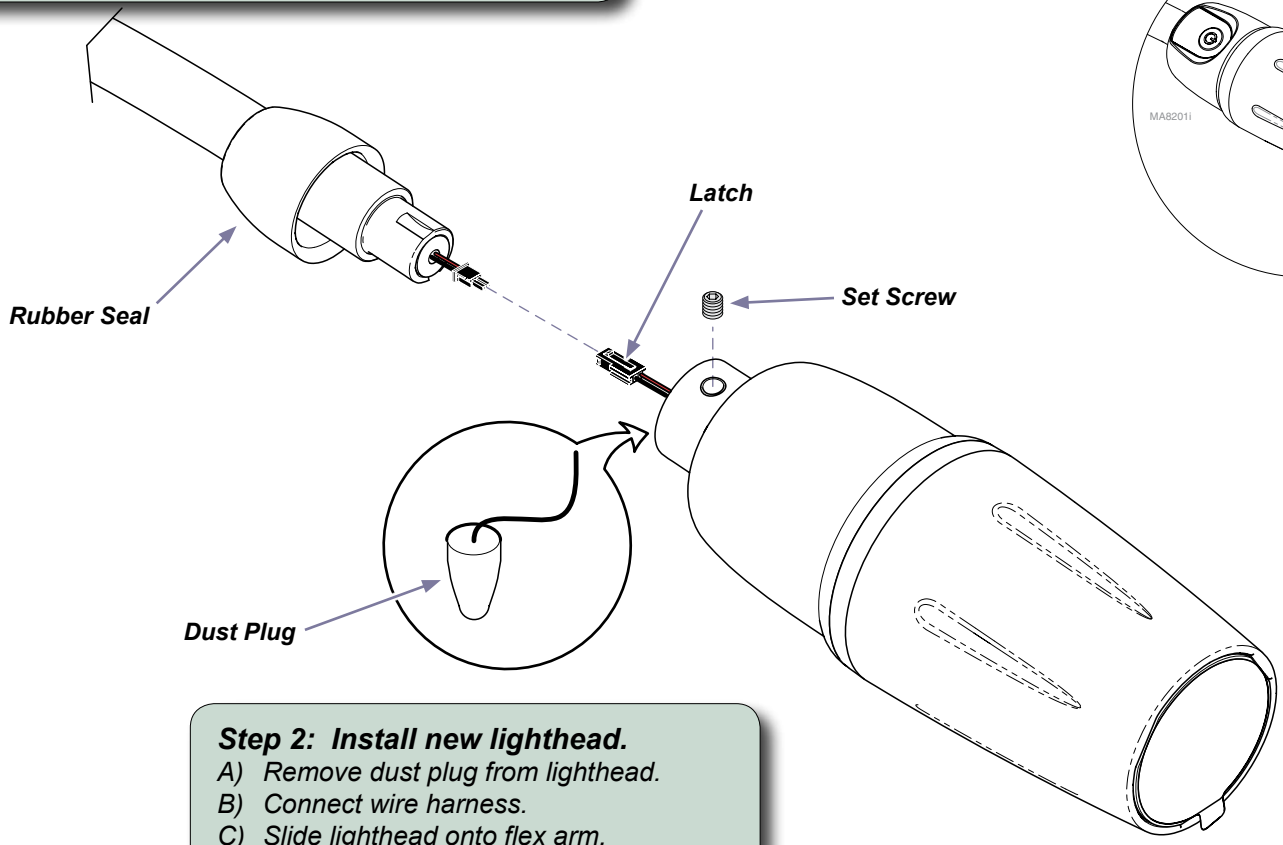
**Components:**

Lighthouse.....	1
Allen wrench.....	1

**Step 1: Disconnect power / remove lighthouse.**

- Disconnect power to light.
- Slide rubber seal up to expose the set screw.
- Remove set screw.
- Release latch on connector, then disconnect wire harness.

**Before using light:**  
Remove protective film from lens.



**Step 2: Install new lighthouse.**

- Remove dust plug from lighthouse.
- Connect wire harness.
- Slide lighthouse onto flex arm.
- Install / tighten set screw.
- Slide rubber seal down over set screw.

MA8213i