

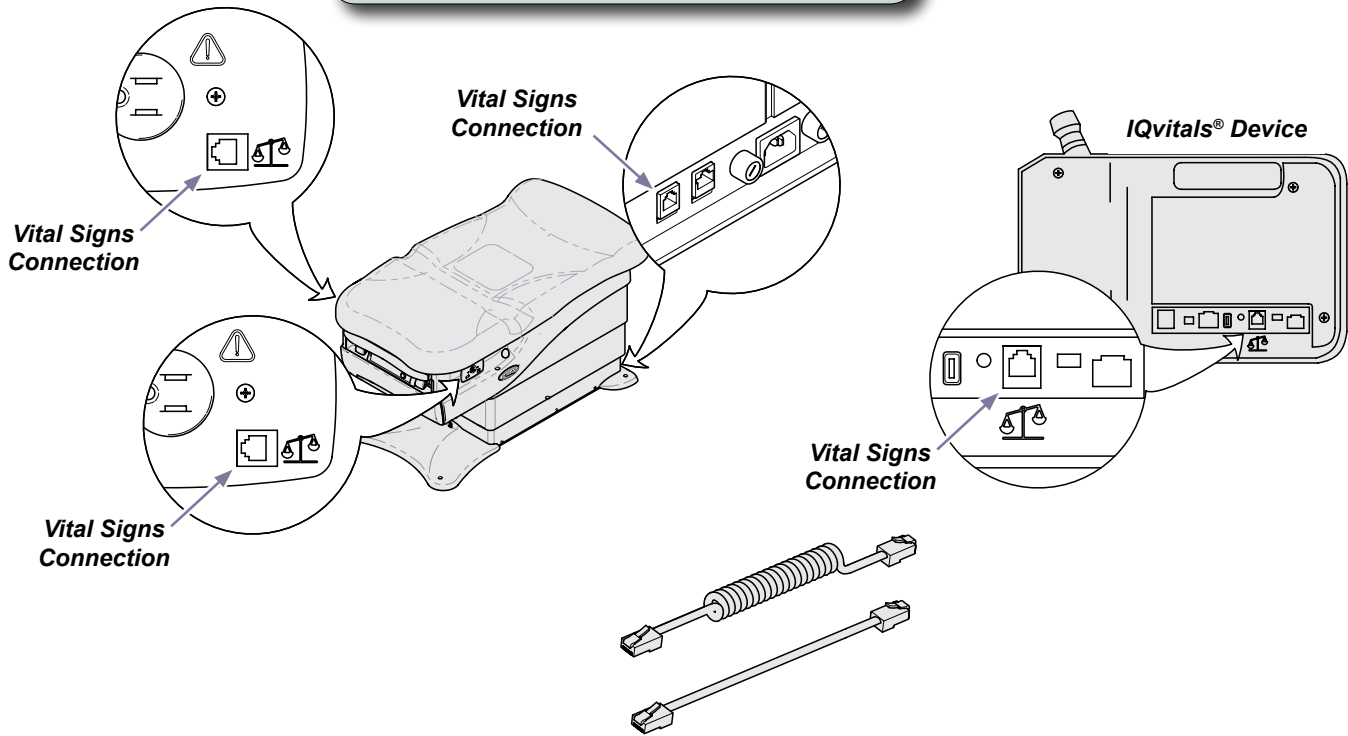


# IQvitals® Serial Cable Installation [9A478]

**Applies to Models:**  
625 (-004)  
626 (-003, -004)  
**Special Tools:**  
none

**WARNING**  
IEC 60950 approved Information Technology Equipment must be placed outside the "patient environment." Refer to safety instructions in the exam table user's guide.

**Step 1:** Connect serial cable to the exam table and the IQvitals® device.

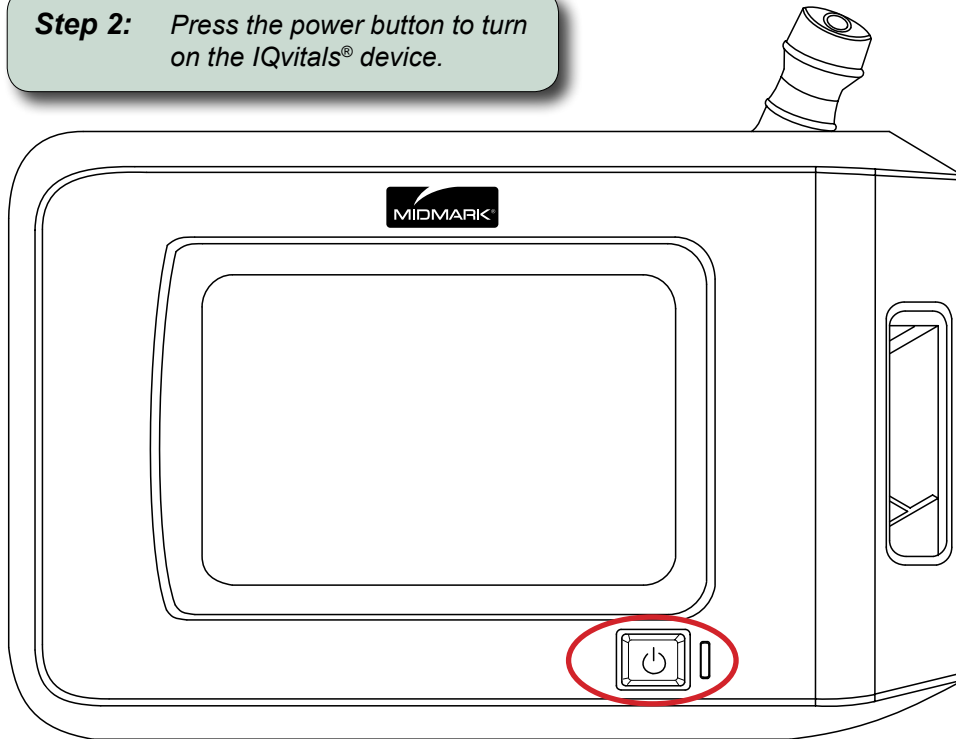


**Note**  
The IQvitals® device may be connected to any of the three connection points on the exam table. However, only one IQvitals® device may be connected at a time.

MA8532i

TP201 Rev. A

**Step 2:** Press the power button to turn on the IQvitals® device.

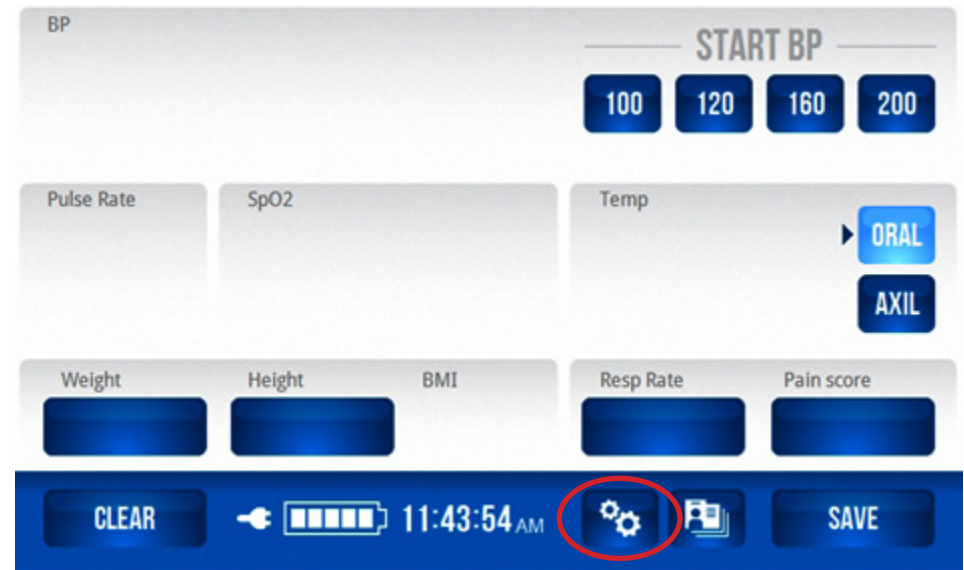


MA8553I

**Note**

Refer to the IQvitals® operation manual for complete details regarding device set-up and usage.

**Step 3:** On the IQvitals® Home screen, press the Tool icon to display the Password screen.



**IQvitals® Home Screen**

**Note**

If the screen on your IQvitals® device does not look like the one shown in step 3, contact Midmark Support Services at 1-800-624-8950, option 2, to order an upgrade kit for your IQvitals® device.

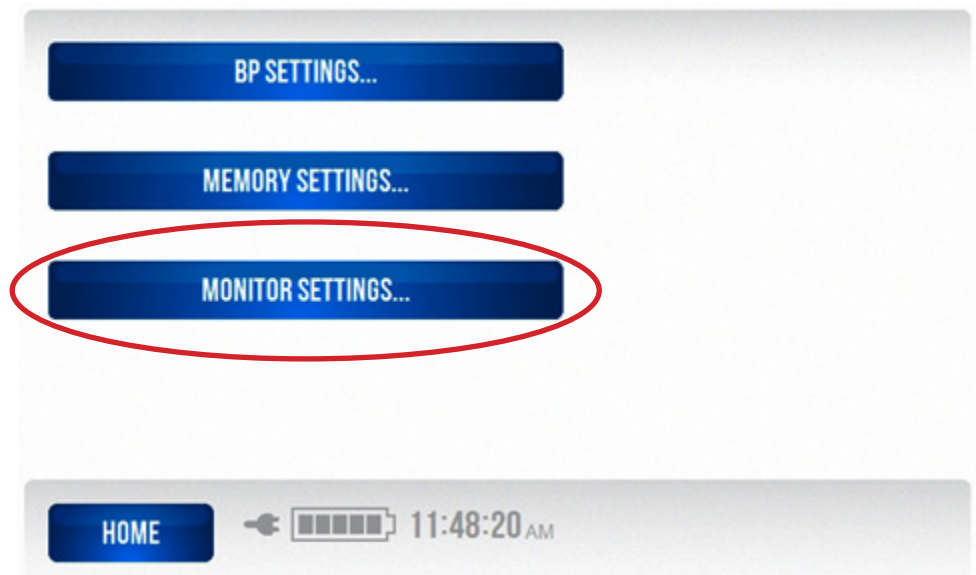
Without this upgrade, the table controls shown in step 10 will not be available. However, sharing of patient weight between the exam table and the IQvitals® device will work properly without any further setup required.

**Step 4:** On the Password screen, enter your password (986 Default). Next, press OK to display the Settings screen.



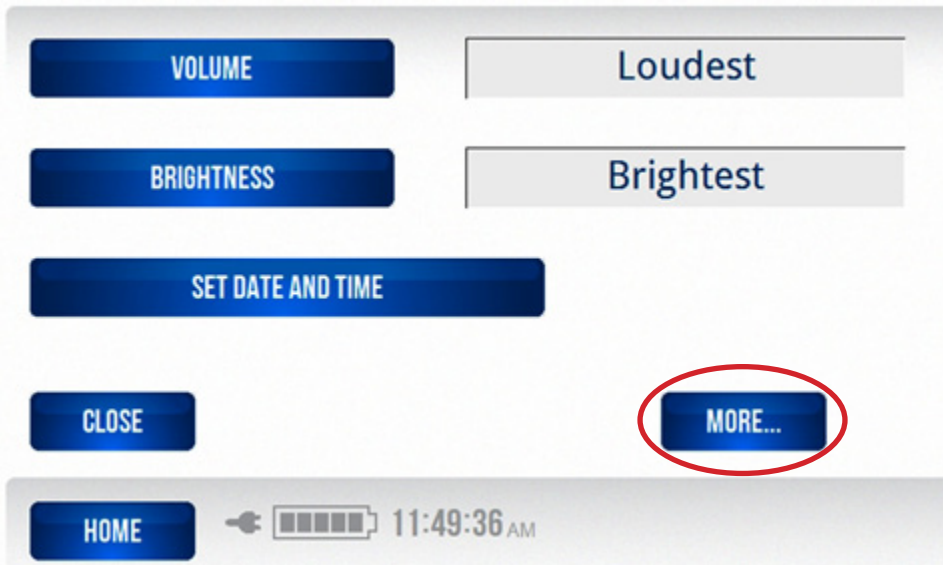
*Password Screen*

**Step 5:** On the Settings screen, press MONITOR SETTINGS.



*Settings Screen*

**Step 6:** Once you have selected your monitor settings, press the MORE button to display the Units of Measure screen.



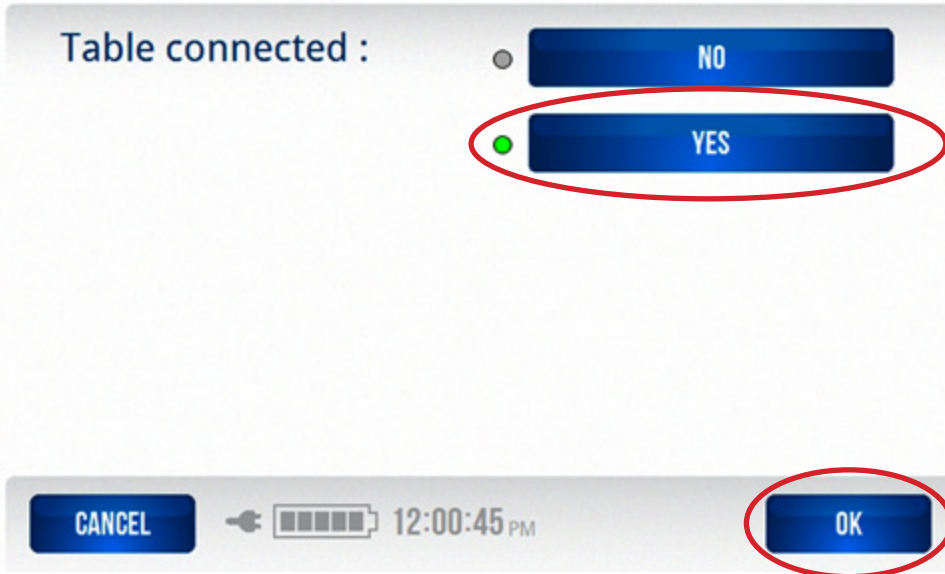
*Monitor Settings Screen*

**Step 7:** Once you have made your units of measure selections, press the TABLE button to display the Table Connection screen.



*Units of Measure Screen*

**Step 8:** On the Table Connection screen, select YES, then press OK to return to the Units of Measure screen.



*Table Connection Screen*

**Step 9:** On the Units of Measure screen, press the HOME button to display the IQvitals® Home screen.



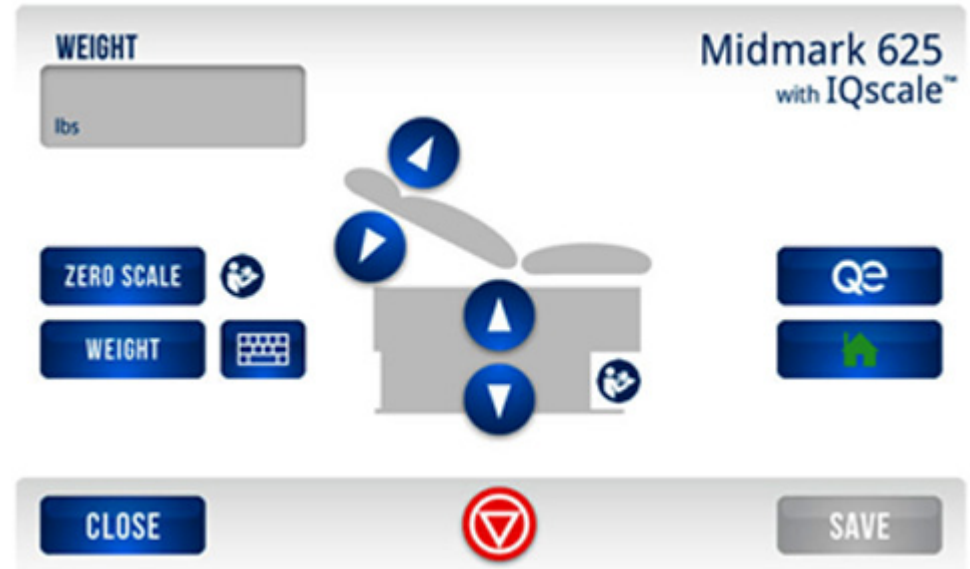
*Units of Measure Screen*

**Step 10:** On the IQvitals® Home screen, press the Table icon.



*IQvitals® Home Screen*

When the Table icon is pressed on the IQvitals® Home screen, the IQscale® screen will be displayed.



*IQscale® Screen*



Because we care.