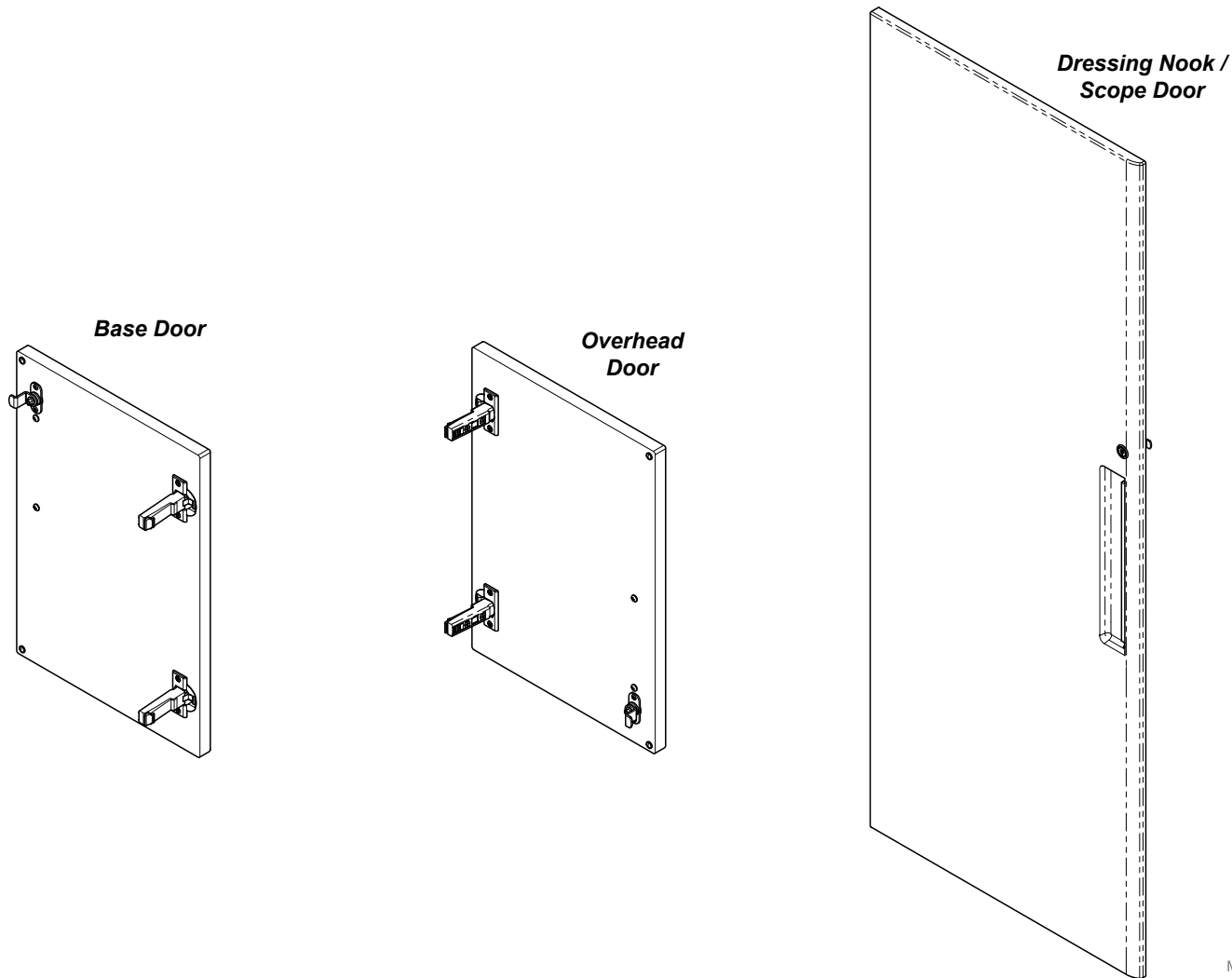


[002-1918-00] Base, [002-1920-00] Overhead, & [002-1927-00] Dressing Nook / Scope Single Door Keyed Lock Installation

Contents:
 Installation 1-3
 Exploded View 4

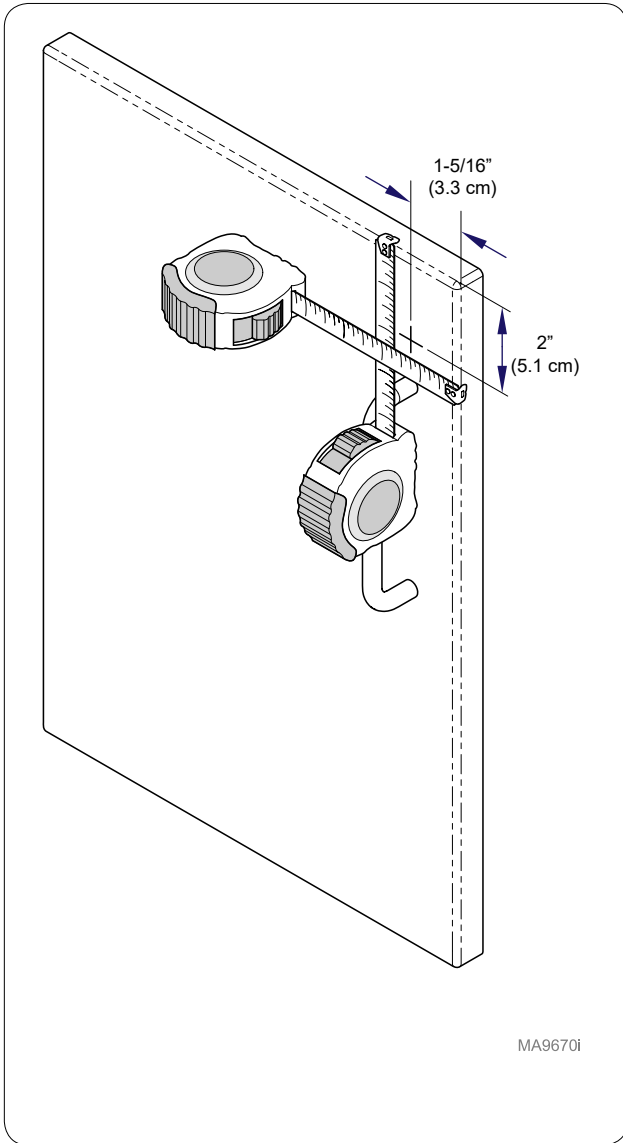
Special Tools:
 none

Language of origin: English



MA9669i

TP200 Rev. A

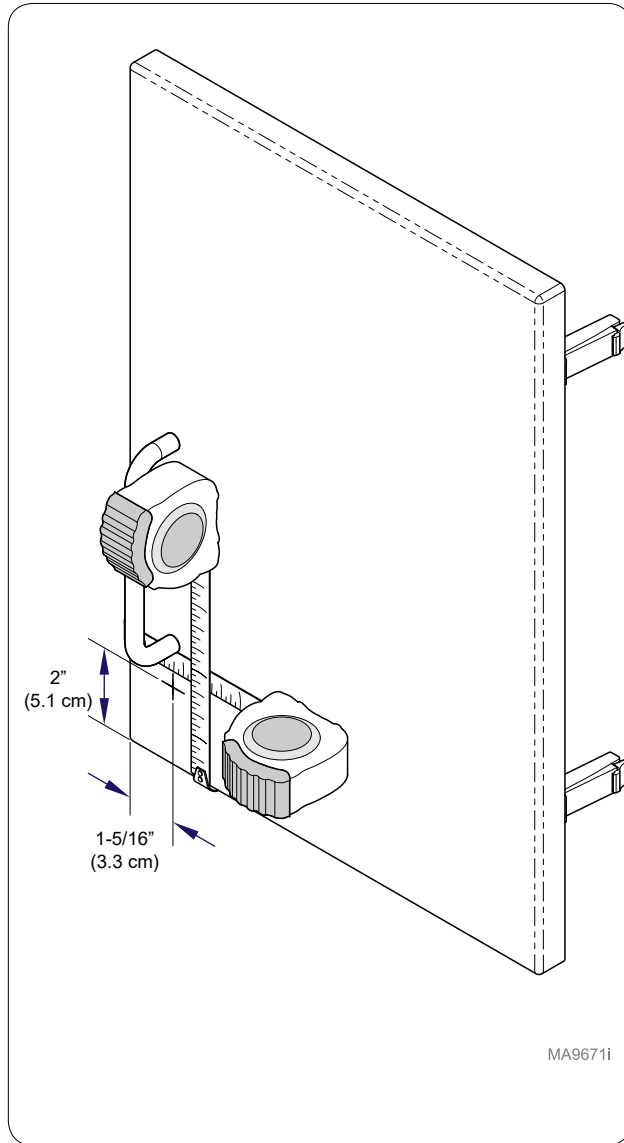


MA9670i

Step 1: Base Cabinet

Measure down from top of door 2" (5.1 cm) and mark door. Measure from edge of door 1-5/16" (3.3 cm) and mark door.

Note: May need to remove handle to make measurements.

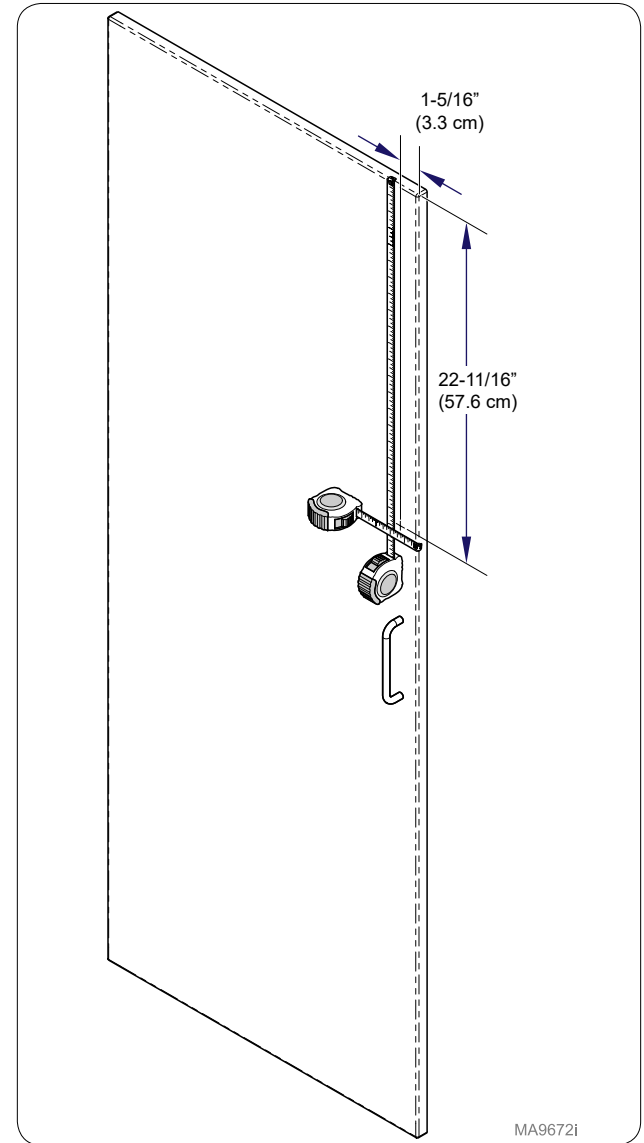


MA9671i

Step 1: Overhead

Measure up from bottom of door 2" (5.1 cm) and mark door. Measure from edge of door 1-5/16" (3.3 cm) and mark door.

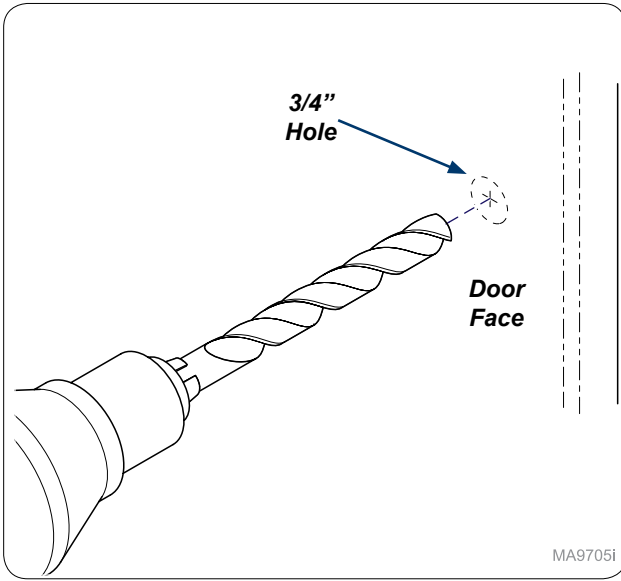
Note: May need to remove handle to make measurements.



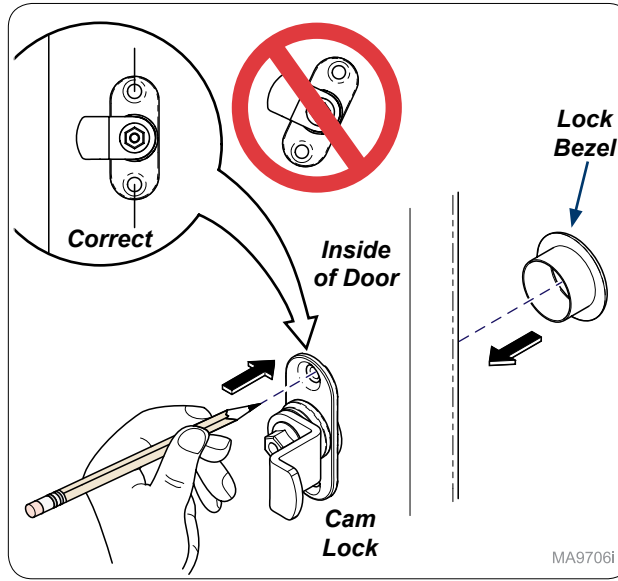
MA9672i

Step 1: Dressing Nook

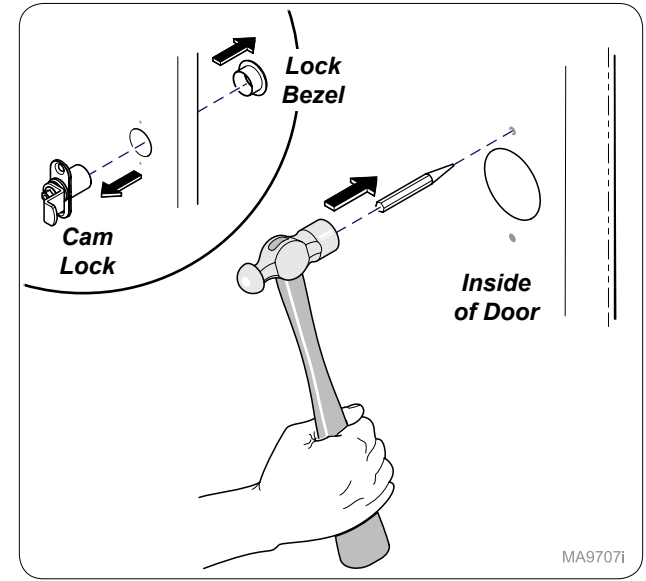
Measure down from top of door 22-11/16" (57.6 cm) and mark door. Measure from edge of door 1-5/16" (3.3 cm) and mark door.



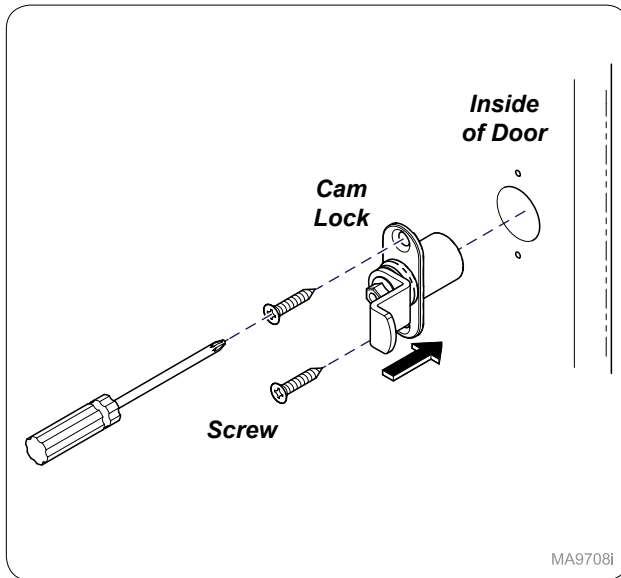
Step 2:
Drill 3/4" hole through door face.



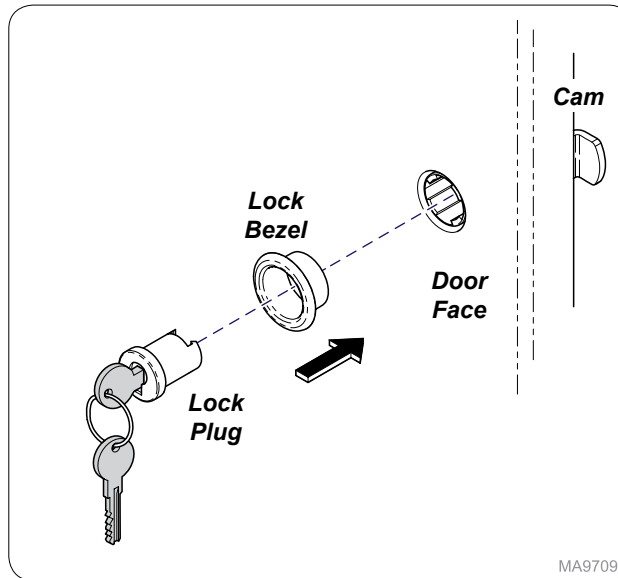
Step 3:
Insert cam lock and lock bezel into drilled hole and mark mounting holes as shown.
Note: Make sure cam lock is parallel with edge of door.



Step 4:
Remove cam lock and lock bezel and use hole punch and hammer to start mounting holes.

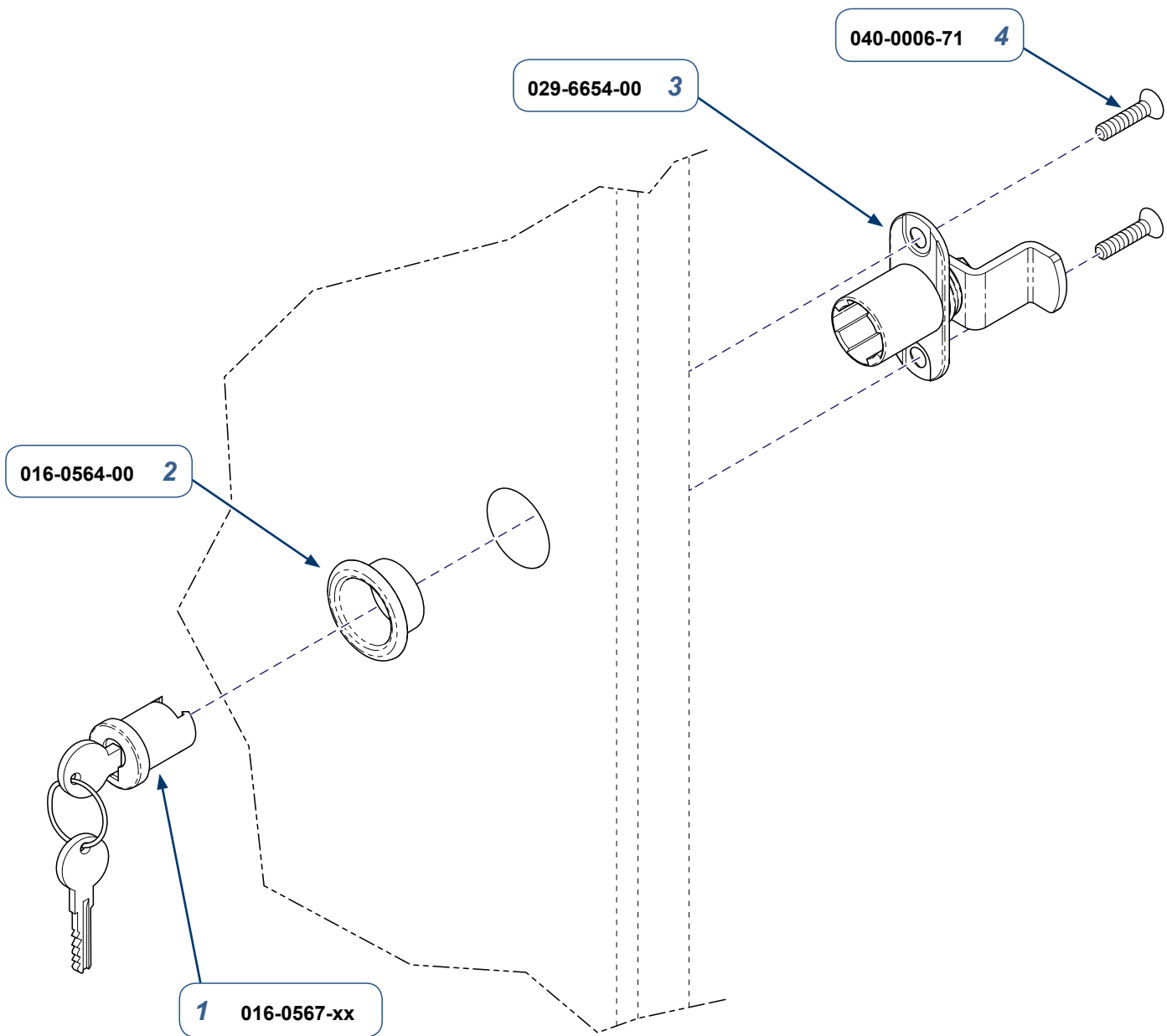


Step 5: (Base shown)
Install cam lock into inside of door and secure with screws (x2).



Step 6:
Install lock bezel and lock plug into door face with cam in locked position as shown.

TP200 Rev. A



Lock Plug	Key Number
016-0567-00	100T
016-0567-01	101T
016-0567-02	102T
016-0567-03	103T
016-0567-04	104T
016-0567-05	105T
016-0567-08	106T
016-0567-09	107T
016-0567-10	108T
016-0567-11	109T
016-0567-12	110T
016-0567-13	111T
016-0567-14	112T
016-0567-15	113T

002-1918-00 Base Single Door 002-1920-00 Overhead Single Door 002-1927-00 Nook / Scope Single Door Keyed Lock Kit <i>(includes items 1 thru 4)</i>		
Item	Description	Qty.
1	• Lock Plug (See Chart)	1
2	• Lock Bezel	1
3	• Cam Lock	1
4	• Screw (#6 x 5/8")	2

MA9710I

Serial Numbers / Dates: all