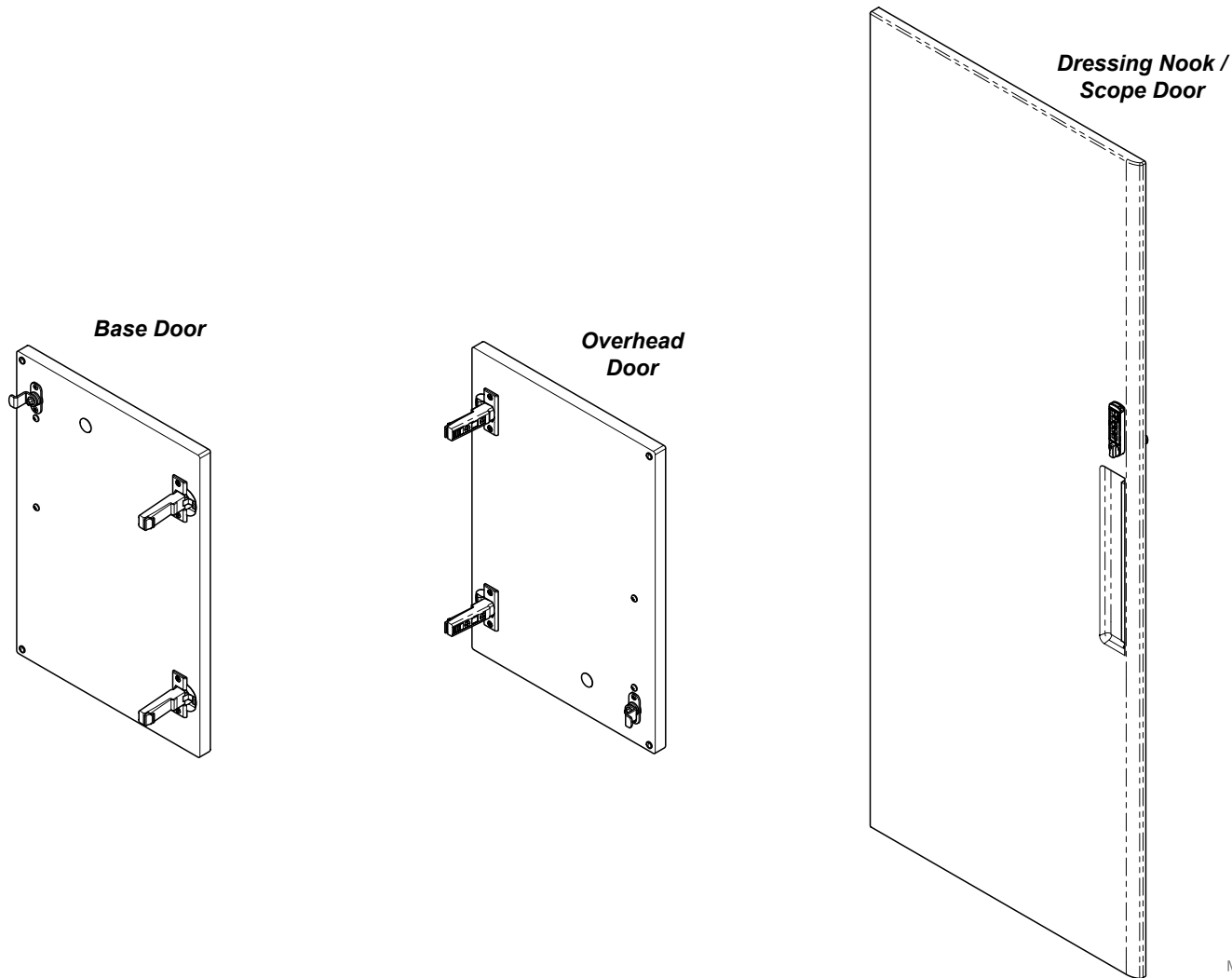


[002-1975-xx] Base, [002-1977-xx] Overhead, & [002-1982-00] Dressing Nook / Scope Single Door Keyless Lock Installation

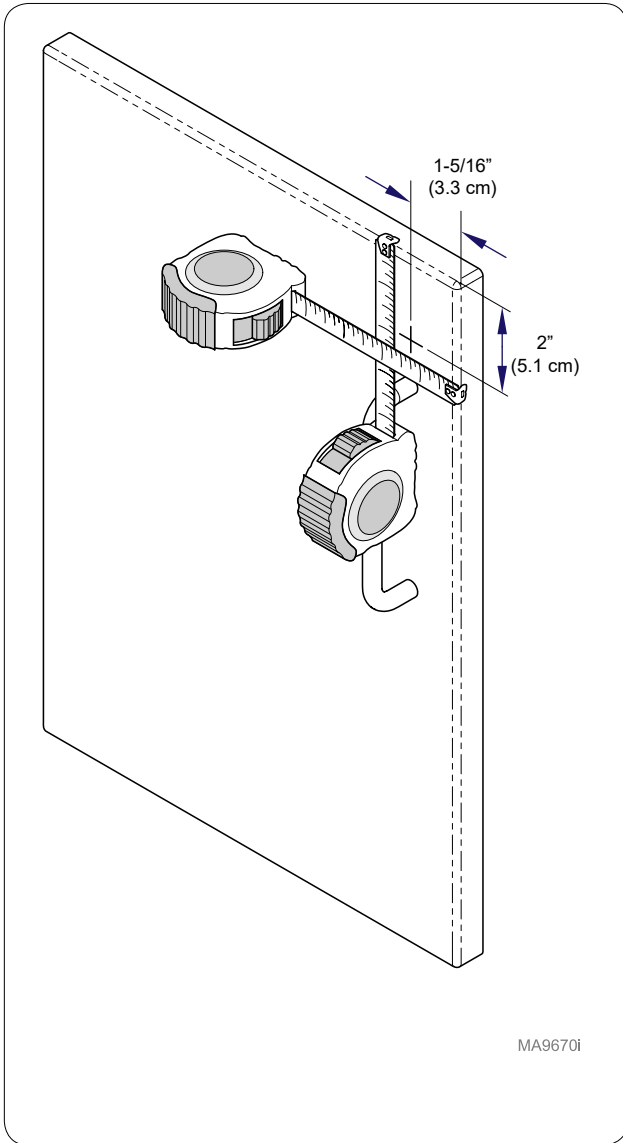
Contents:
Installation 1-3
Exploded View 4

Special Tools:
none

Language of origin: English



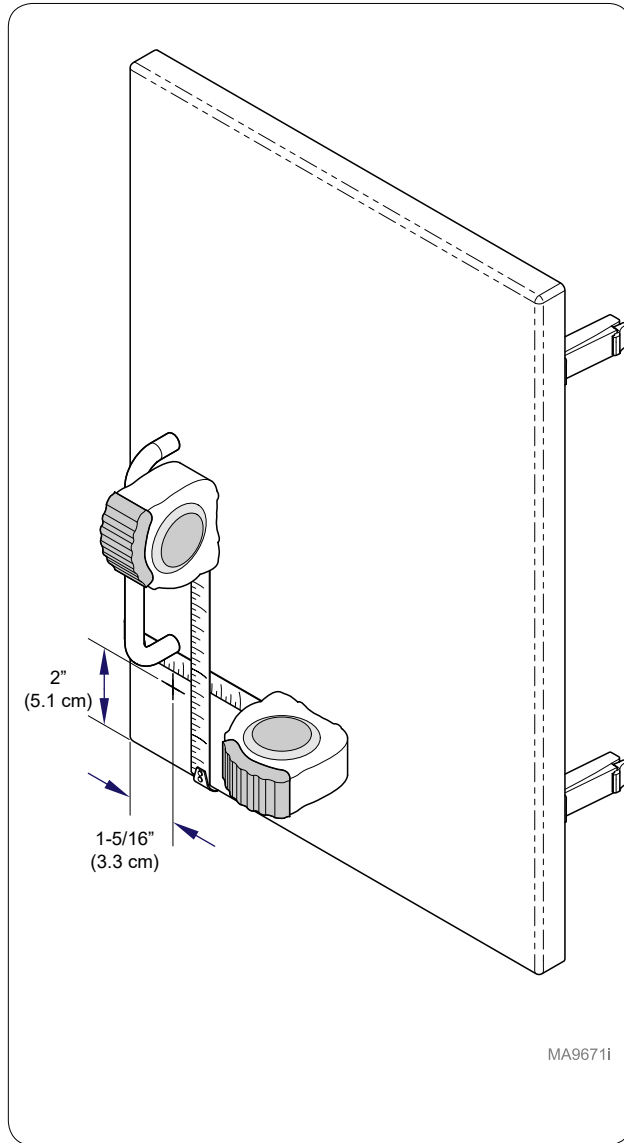
MA9854i



Step 1: Base Cabinet

Measure down from top of door 2" (5.1 cm) and mark door. Measure from edge of door 1-5/16" (3.3 cm) and mark door.

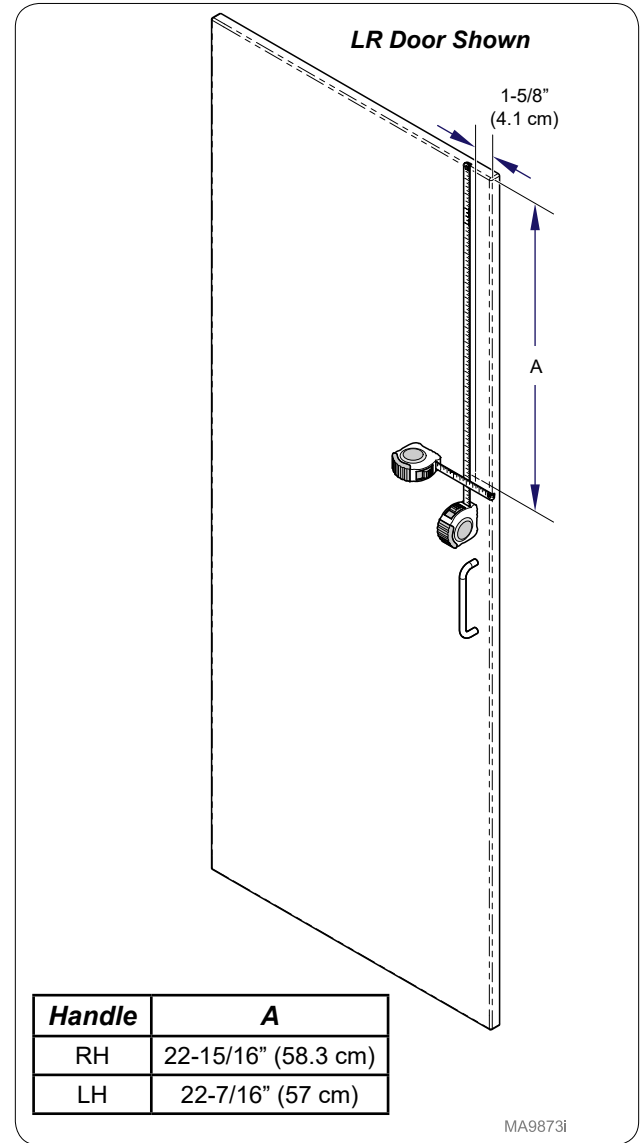
Note: May need to remove handle to make measurements.



Step 1: Overhead

Measure up from bottom of door 2" (5.1 cm) and mark door. Measure from edge of door 1-5/16" (3.3 cm) and mark door.

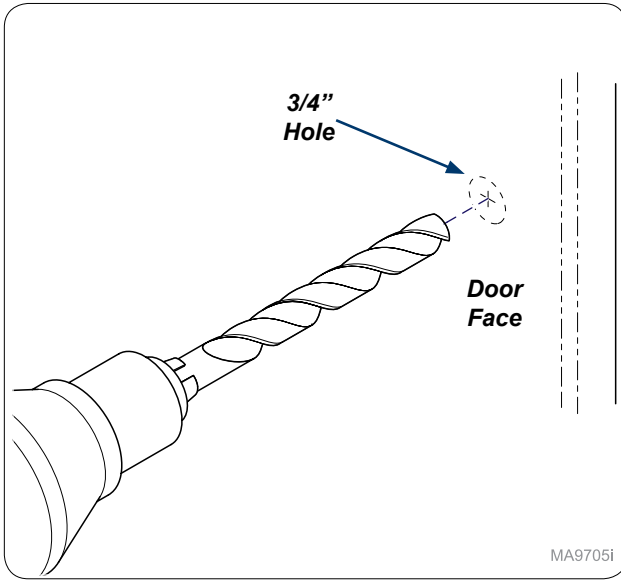
Note: May need to remove handle to make measurements.



Handle	A
RH	22-15/16" (58.3 cm)
LH	22-7/16" (57 cm)

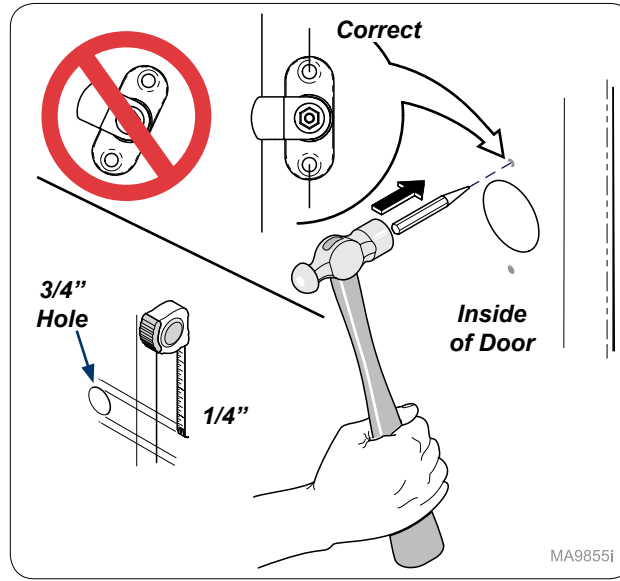
Step 1: Dressing Nook

Measure down from top of door 22-11/16" (5.1 cm) and mark door. Measure from edge of door 1-5/16" (3.3 cm) and mark door.



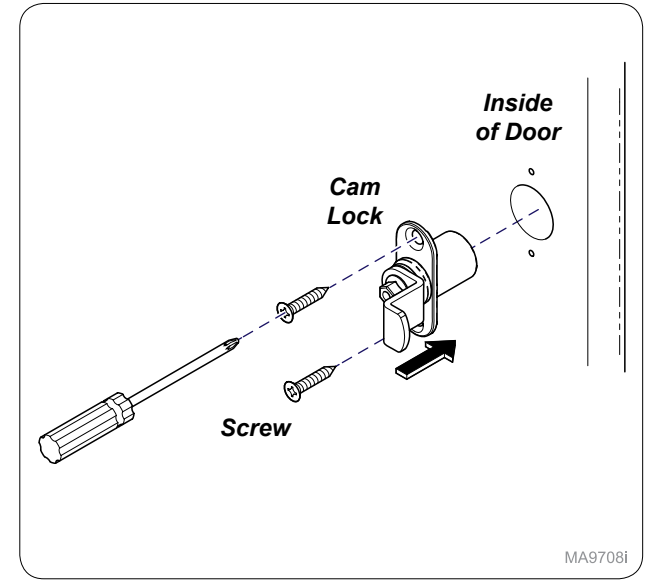
MA9705i

Step 2:
Drill 3/4" hole through door face.



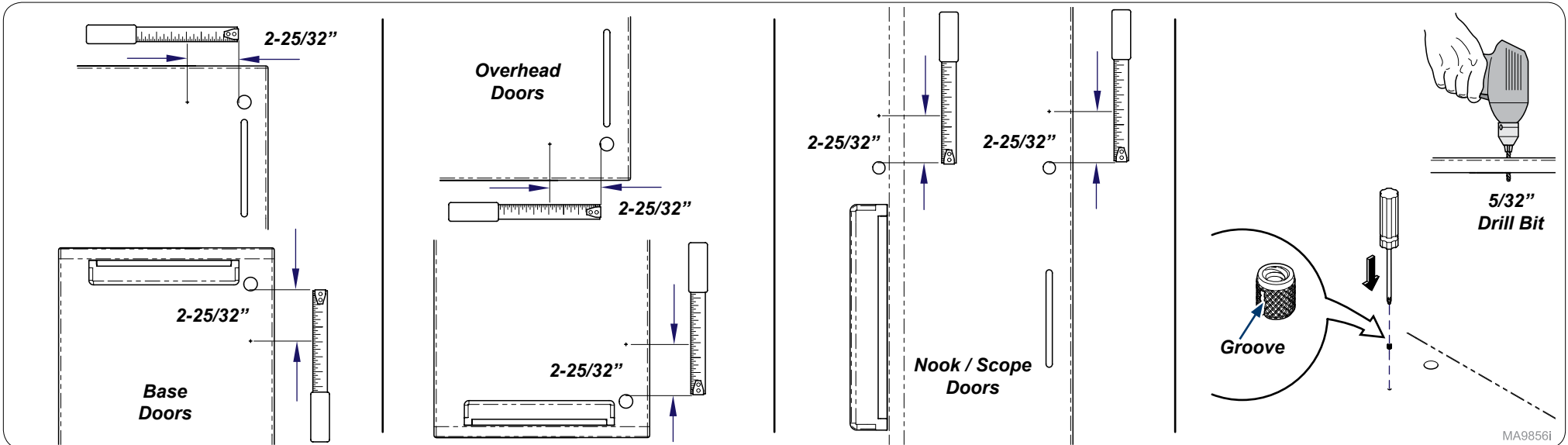
MA9855i

Step 3:
Measure 1/4" from 3/4" hole and mark as shown. Use hole punch and hammer to start mounting holes. **Note: Make sure mounting mark is parallel with edge of door.**



MA9708i

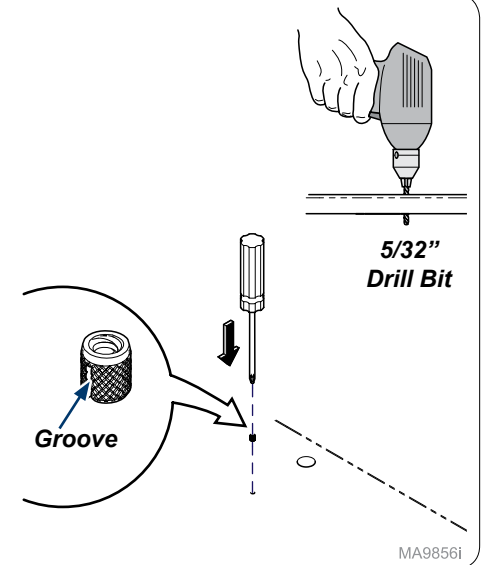
Step 4: (Base shown)
Install cam lock into inside of door and secure with screws (x2).

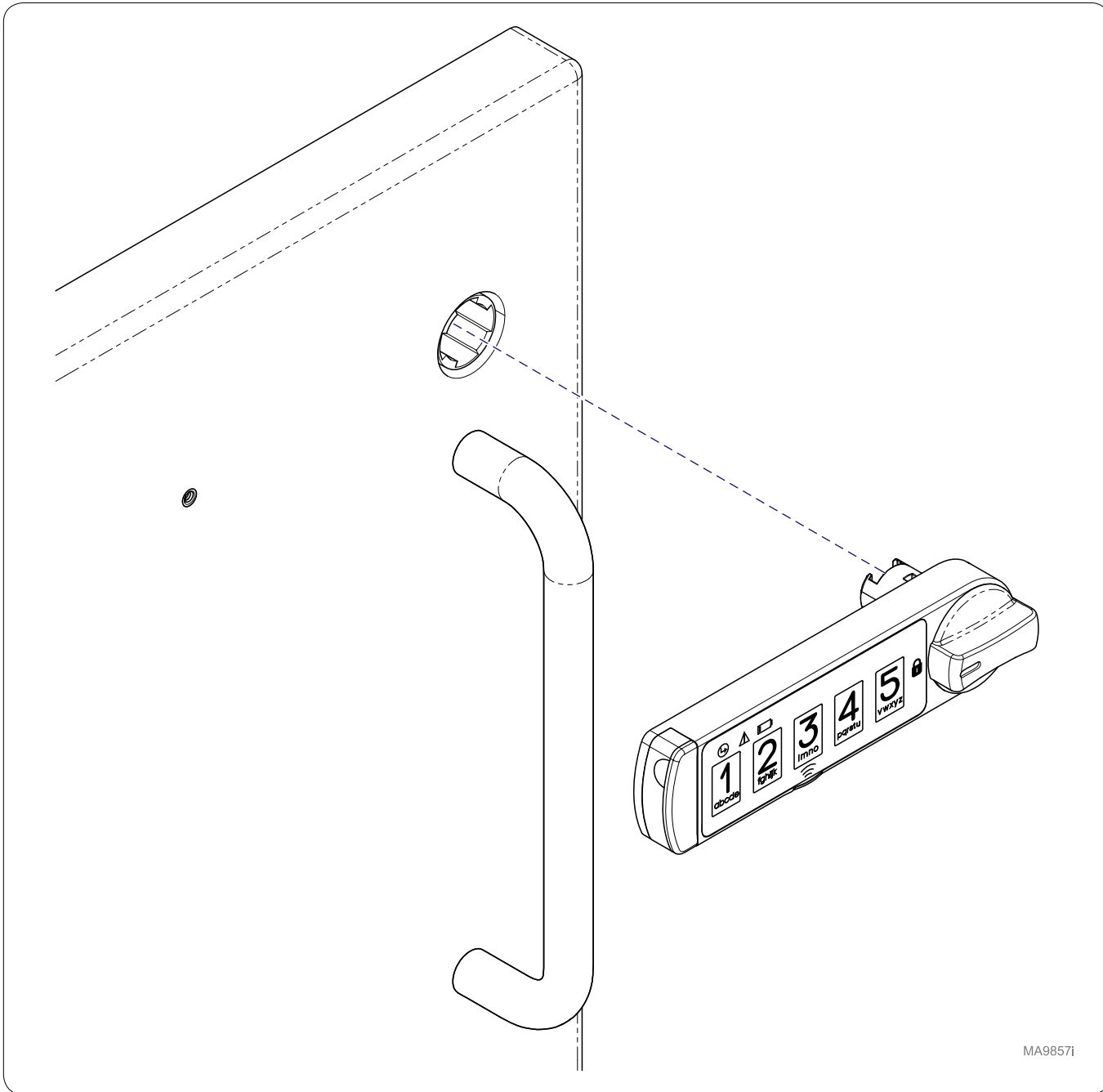


MA9856i

Step 5:
Measure 2-25/32" from 3/4" hole and mark hole as shown.

Step 6:
Drill 5/32" hole in door. Push Thread Insert groove first into door. **Note: Keep insert flush with mullion face.**



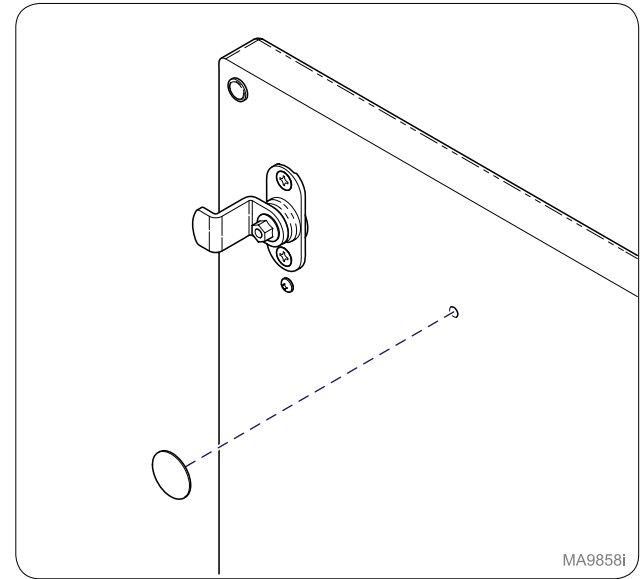


MA98571

Step 7: (Base shown)

Use manufacture's instructions to assemble Keyless Lock.

Note: After assembling lock, continue to Step 8 to finish installation.

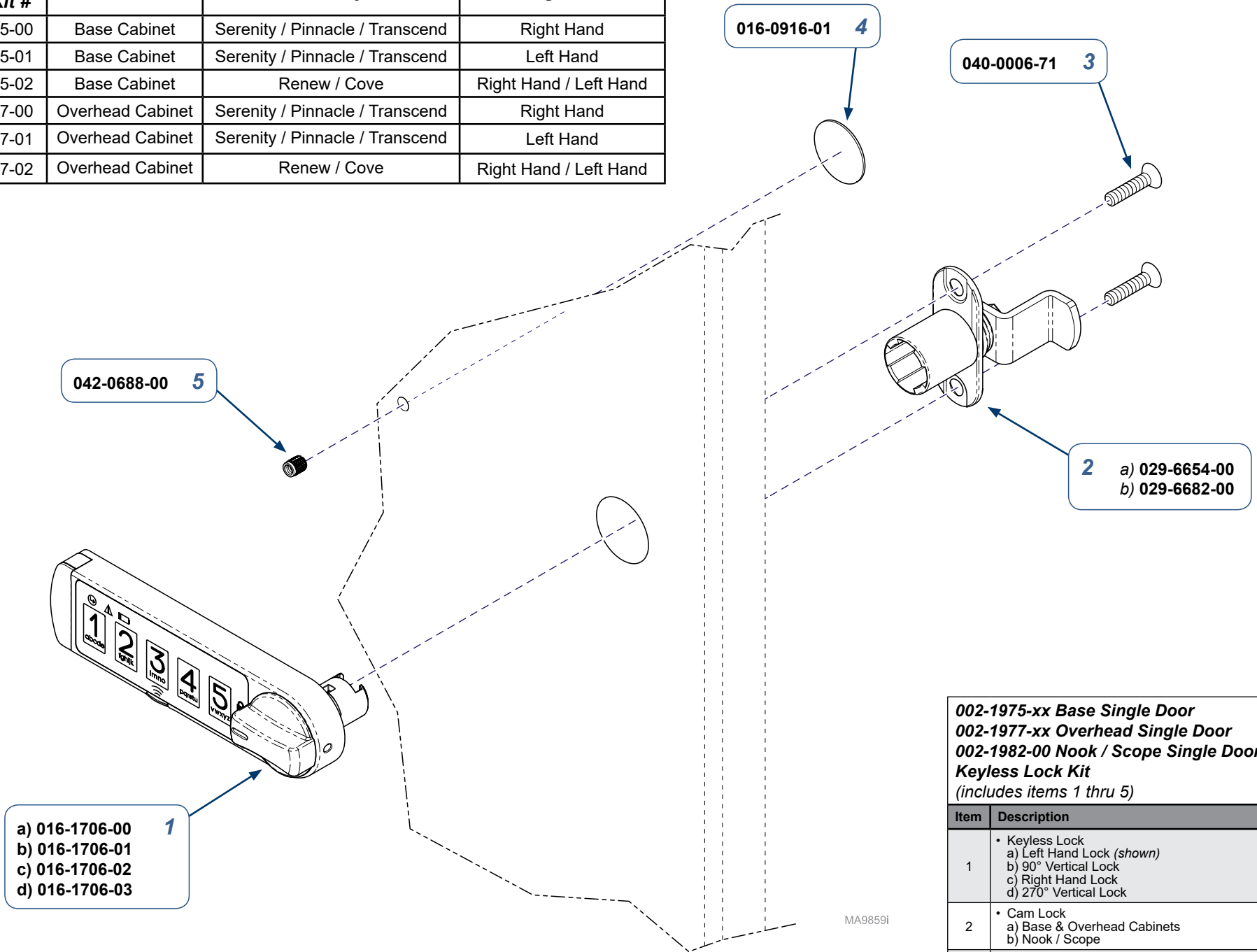


MA9858i

Step 8: (Base shown)

Install Cover Cap onto back side of door.

Keyless Lock Kit #	Unit	Panel Style	Hinge Side
002-1975-00	Base Cabinet	Serenity / Pinnacle / Transcend	Right Hand
002-1975-01	Base Cabinet	Serenity / Pinnacle / Transcend	Left Hand
002-1975-02	Base Cabinet	Renew / Cove	Right Hand / Left Hand
002-1977-00	Overhead Cabinet	Serenity / Pinnacle / Transcend	Right Hand
002-1977-01	Overhead Cabinet	Serenity / Pinnacle / Transcend	Left Hand
002-1977-02	Overhead Cabinet	Renew / Cove	Right Hand / Left Hand



002-1975-xx Base Single Door
002-1977-xx Overhead Single Door
002-1982-00 Nook / Scope Single Door
Keyless Lock Kit
(includes items 1 thru 5)

Item	Description	Qty.
1	• Keyless Lock a) Left Hand Lock (shown) b) 90° Vertical Lock c) Right Hand Lock d) 270° Vertical Lock	1
2	• Cam Lock a) Base & Overhead Cabinets b) Nook / Scope	1
3	• Screw (#6 x 5/8")	2
4	• Cover Cap	1
5	• Press-Fit Thread Insert	1

Serial Numbers / Dates: all

TP200 Rev. A