



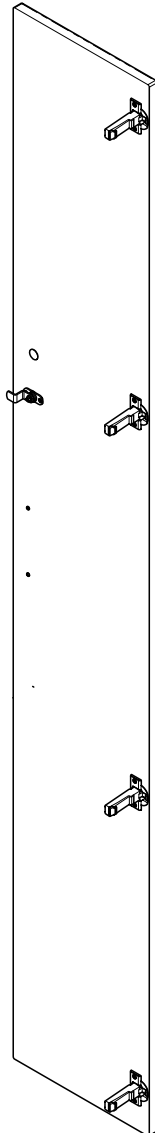
[002-1979-00] Tall Unit & [002-1980-xx] Tall Split Single Door Keyless Lock Installation

Contents:
Installation 1-3
Exploded View 4

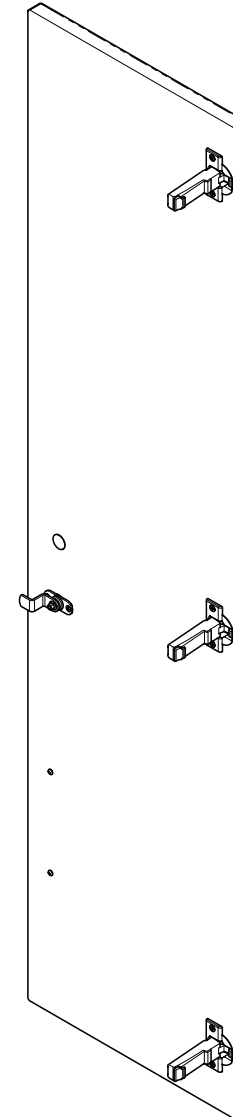
Special Tools:
none

Language of origin: English

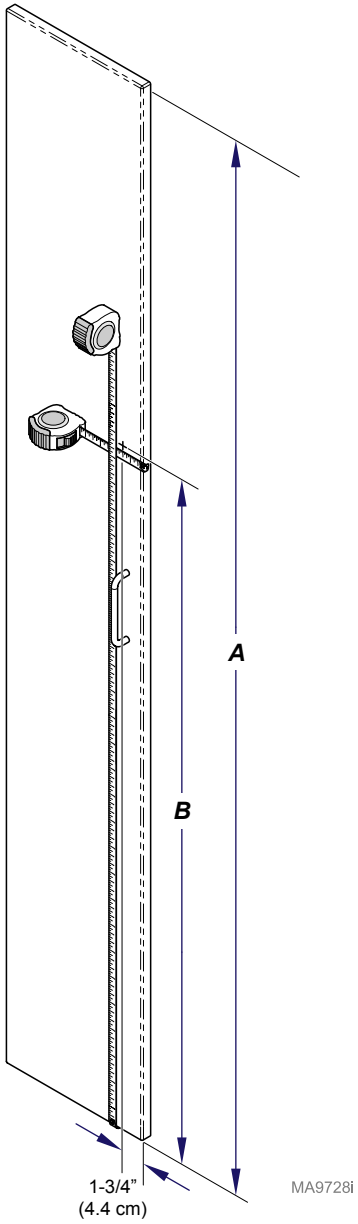
Tall Unit



Tall Split



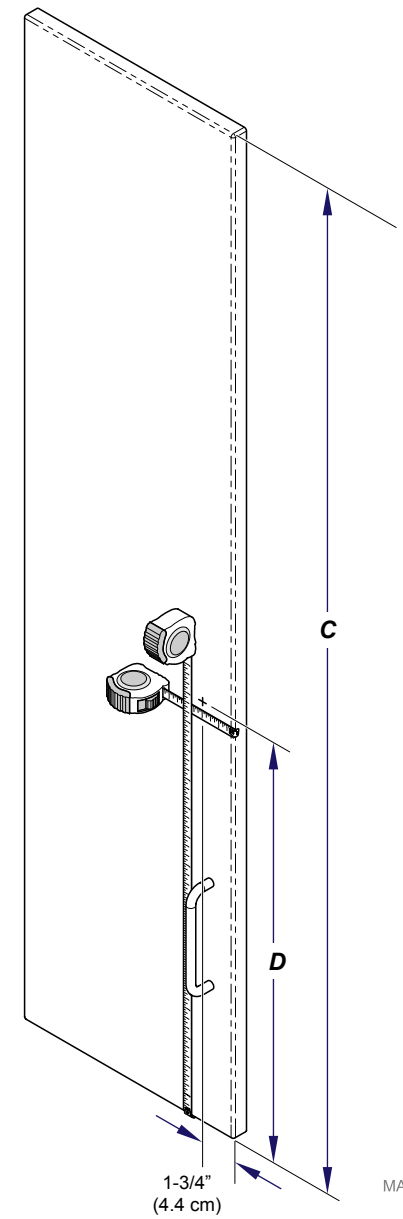
MA9867i



(A) Door Length	(B) Lock Location
79-3/4" (202.6 cm)	51-1/16" (129.7 cm)
67-3/4" (172.1 cm)	45-1/16" (114.5 cm)

MA9728i

(C) Door Length	(D) Lock Location
49-3/8" (125.4 cm)	20-11/16" (52.5 cm)
37-3/8" (94.9 cm)	14-11/16" (37.3 cm)



MA9729i

Step 1: Tall Unit

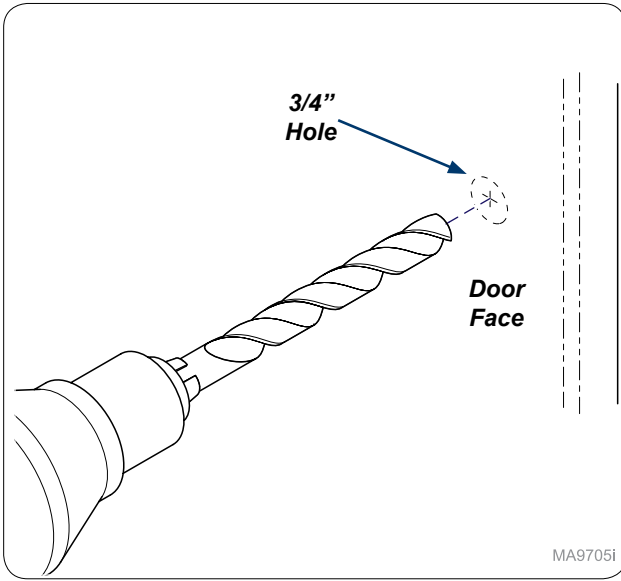
Measure from edge of door 1-3/4" (4.4 cm) and mark door. Use chart to measure from bottom of door up to mark door.

Note: May need to remove handle to make measurements.

Step 1: Tall Split

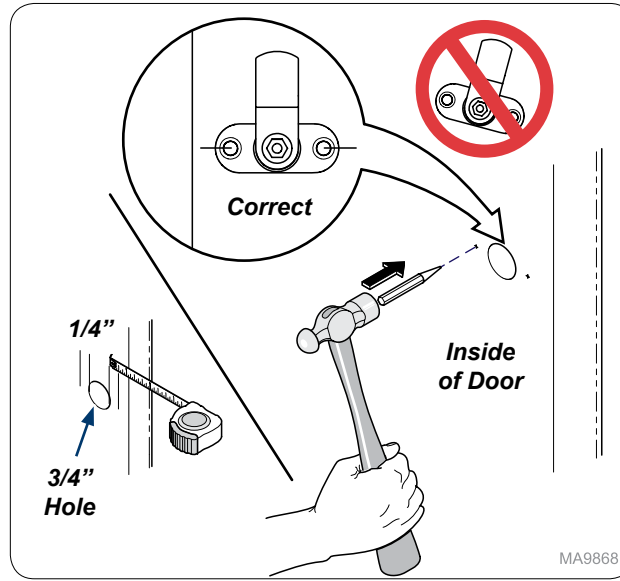
Measure from edge of door 1-3/4" (4.4 cm) and mark door. Use chart to measure from bottom of door up to mark door.

Note: May need to remove handle to make measurements.



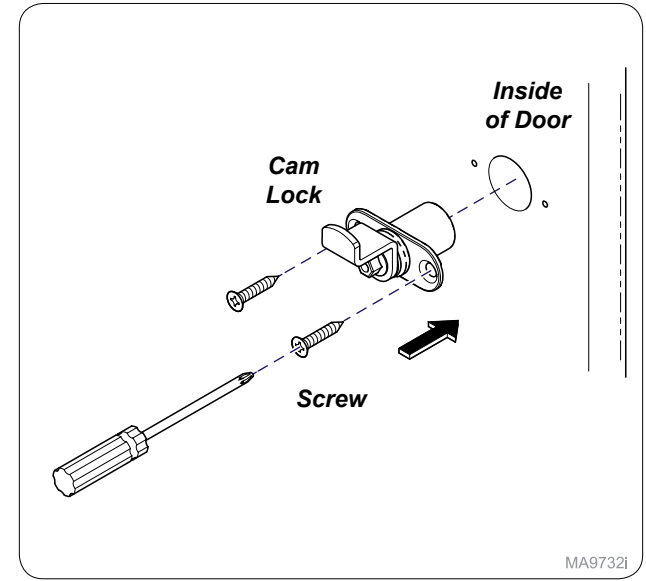
MA9705i

Step 2:
Drill 3/4" hole through door face.



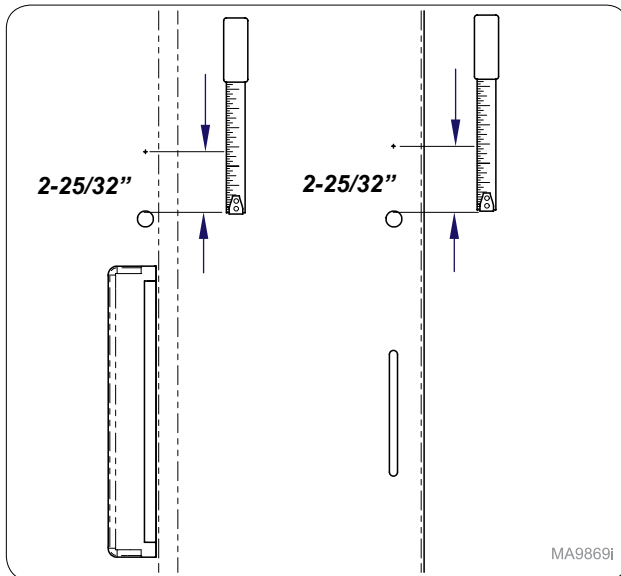
MA9868i

Step 3:
Measure 1/4" from 3/4" hole and mark as shown. Use hole punch and hammer to start mounting holes. **Note: Make sure mounting mark are as shown on door.**



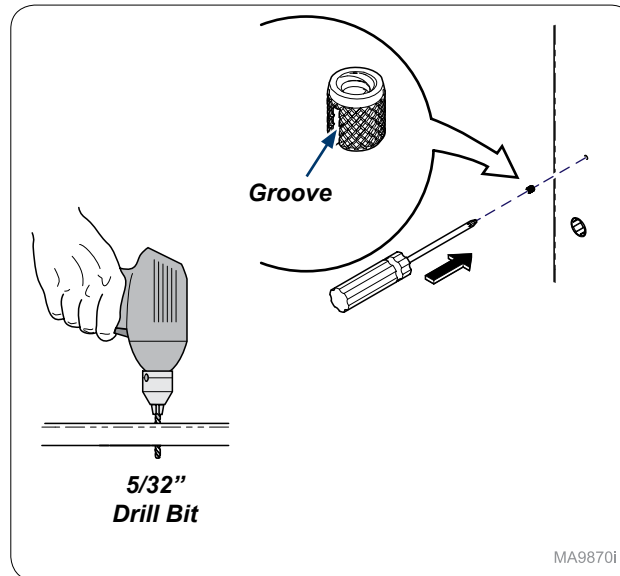
MA9732i

Step 4:
Install cam lock into inside of door and secure with screws (x2).



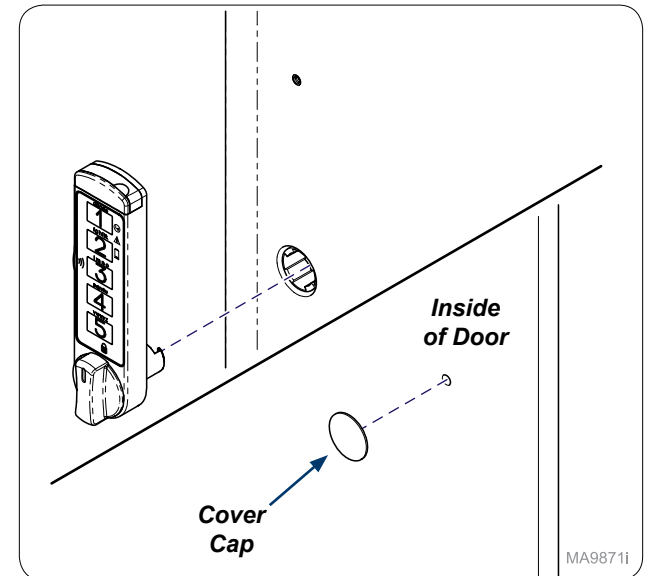
MA9869i

Step 5:
Measure 2-25/32" from 3/4" hole and mark hole as shown.



MA9870i

Step 6:
Drill 5/32" hole in door. Push Thread Insert groove first into door. **Note: Keep insert flush with door face.**



MA9871i

Step 7:
Use manufacture's instructions to assemble Keyless Lock. **Note: After assembling lock, Place cover cap on inside of door to cover hole drilled for insert.**

016-0916-01 3

042-0688-00 2

4 040-0006-71

5 SEE CHART

1 016-1706-01

Keyless Lock Kit #	Cam	Where Used
002-1979-00	029-6682-01	ALL
002-1980-00	029-6654-00	Only 37.375" Tall Cabinet Split and Tall Cabinet Window Doors - Serenity / Pinnacle / Transcend
002-1980-01	029-6682-01	All other Tall Cabinet Split Single Doors

Item	Description	Qty.
1	• 90° Vertical Keyless Lock	1
2	• Press-Fit Thread Insert	1
3	• Cover Cap	1
4	• Screw (#6 x 5/8")	2
5	• Cam Lock	2

Serial Numbers / Dates: all

MA9872i