

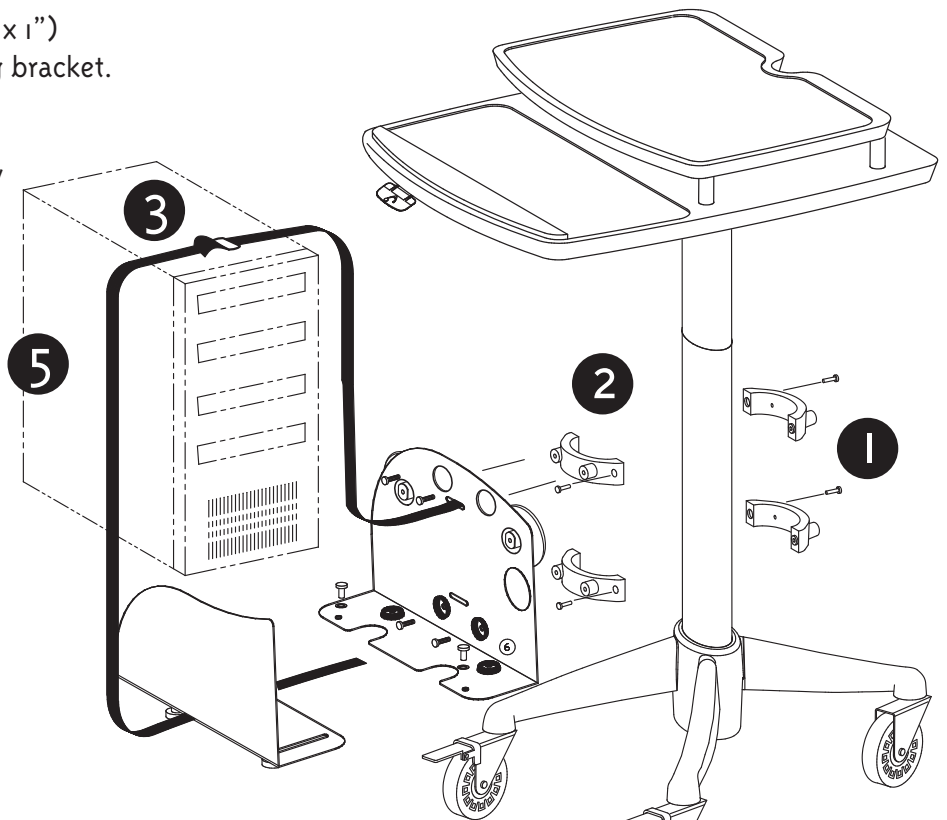
Tools required:
Phillips head screwdriver
Electric Drill with Drive Extension
1/2" Drill Bit

Parts Included:
(1) CPU Mounting Bracket Assembly

(2) Sets of Mounting Bracket Assemblies
(4) 10-24 x 7/8" Long Phillips Drive Pan Head Machine Screws
(4) 10-24 x 1" Long Phillips Drive Pan Head Machine Screws
(4) 1/4-20 Heavy Duty Snap Toggles
(4) 1/4-20 x 2" Long Phillips Drive Pan Head Machine Screws
(2) Cable Ties
(1) Safety Strap

FOR COLUMN MOUNT:

- 1 Measuring up 2 " from the top of the hub, attach screws (2 - 10-24 x 1") into the back of accessory mounting bracket.
- 2 Attach CPU2 accessory securely to mounting brackets through screw holes with (4) 10-24 x 7/8" screws.
- 3 Undo velcro security strap.
- 4 Loosen and remove knobs, washers and carriage bolts. Flip assembly 90 degrees so knob is facing down and carriage bolt is on top.
- 5 Place CPU into CPU2 holder. Secure Velcro Security Straps. For best results, place loop of velcro strap on top of cpu. pull end of strap through loop and pull to tighten.
- 6 Tighten knobs.
- 7 For cable management, use the provided Techflex sleeving.
- 8 For access cables, wrap around the provided cable management holders (fig. a).



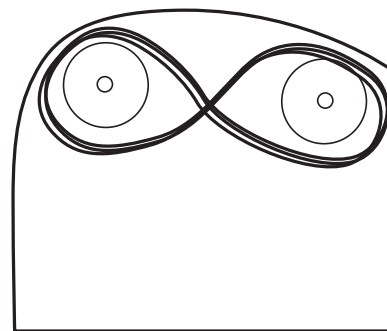
SHIPPING ASSEMBLY METHOD



USE THIS ASSEMBLY METHOD



4



8


(fig. a)

Tools required:
#2 Phillips Drive Screw driver or #2 Square bit drive

Parts Included:
(1) CPU Mounting Bracket Assembly

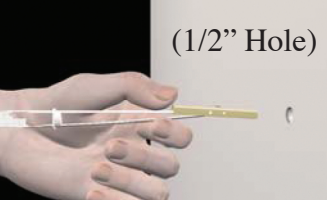
(2) Sets of Mounting Bracket Assemblies
(4) 10-24 x 7/8" Long Phillips Drive Pan Head Machine Screws
(4) 10-24 x 1" Long Phillips Drive Pan Head Machine Screws
(2) Cable Ties
(1) Safety Strap

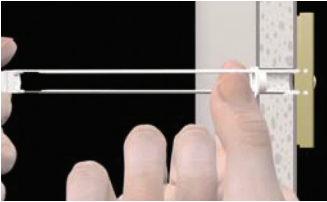
FOR WALL-MOUNT:

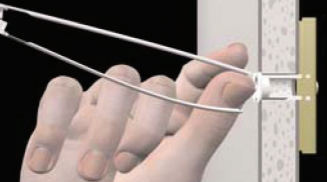


Caution
Proper installation of toggle bolts required to provide secure wall mounting. Minimum drywall thickness to be 1/2".

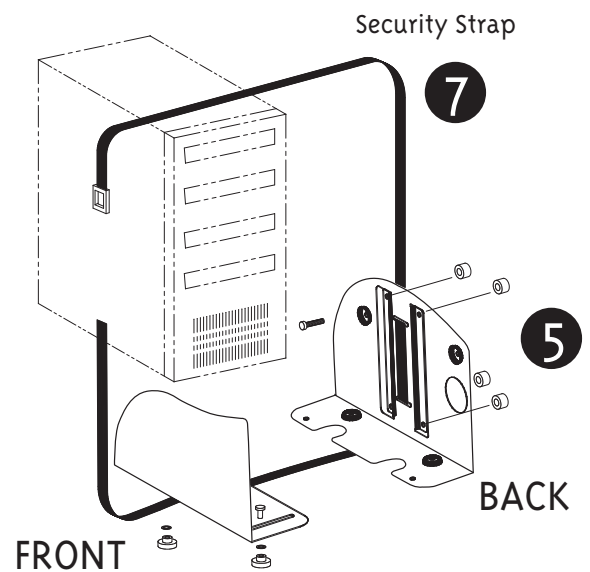
- 1 Undo Security Strap.
- 2 Locate (4) holes in back panel of CPU holder. Use punch to establish hole location in wall.
- 3 Using the hole locations, drill (4) 1/2" holes.
- 4 Install Heavy Duty Toggle bolts.

a.  (1/2" Hole) Drill 1/2" size hole. Hold metal channel flat alongside plastic straps and slide channel through the hole. Minimum clearance behind wall: only 1 7/8"

b.  Hold ends of straps together between thumb & forefinger and pull toward you until channel rests behind wall. Ratchet cap along straps with other hand until flange of cap is flush with wall.

c.  Place thumb between straps at wall. Push thumb side to side, snapping off straps level with flange of cap.

- 5 Insert and secure (4) 1/4-20 x 3" Long Phillips Drive Pan Head Machine Screws and (4) spacers.
- 6 Open CPU holder by unscrewing knobs. Loosen and remove knobs, washers and carriage bolts. Flip assembly 90 degrees so knob is facing down and carriage bolt is on top.
- 7 Place CPU into holder. Secure it by tightening security strap.
- 8 Note: It is important for proper holding of CPU or other devices, that the security strap must go in front of the CPU holder's front panel (see diagram).



SHIPPING ASSEMBLY METHOD

-  KNOB
-  WASHER
-  CARRIAGE BOLT

USE THIS ASSEMBLY METHOD

-  KNOB
-  WASHER
-  CARRIAGE BOLT