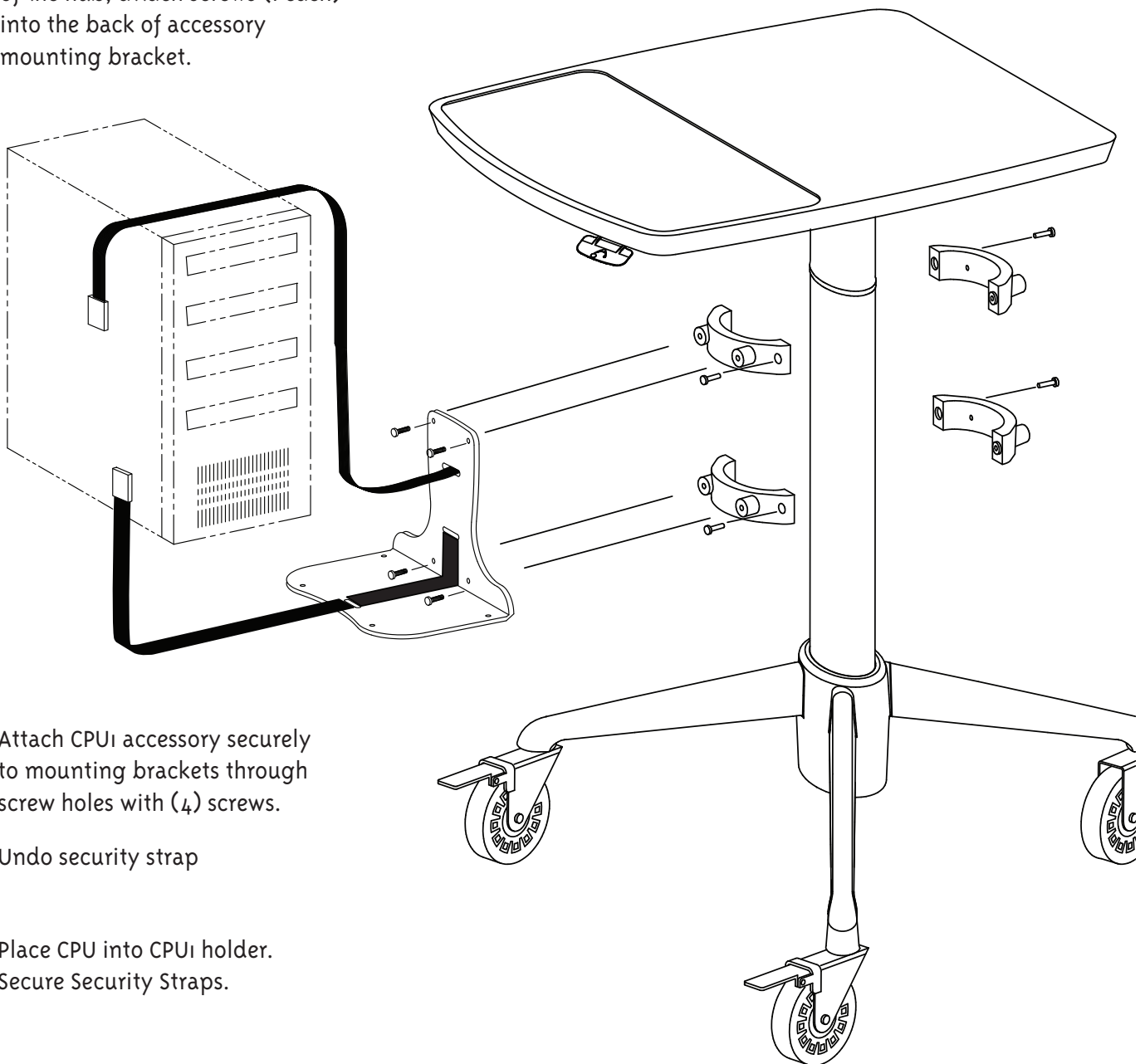




Tools required:
#2 Phillips Drive Screw driver or #2 Square bit drive

Parts Included:
(1) CPU Mounting Bracket
(2) Sets of Mounting Bracket Assemblies
(4) 10-24 x 7/8" Long Phillips Drive Pan Head Machine Screws
(4) 10-24 x 1" Long Phillips Drive Pan Head Machine Screws
(2) Cable Ties
(1) Safety Strap

- 1 Measuring up 2" from the top of the hub, attach screws (1 each) into the back of accessory mounting bracket.



- 2 Attach CPU accessory securely to mounting brackets through screw holes with (4) screws.
- 3 Undo security strap
- 4 Place CPU into CPU holder. Secure Security Straps.