



DC Laptop & Flat Panel Carts

Quick Reference

Set-up Guide



60 Vista Drive | Versailles, OH 45380-0286
T: 1.800.MIDMARK | www.midmark.com | MMDCSG09 REV B



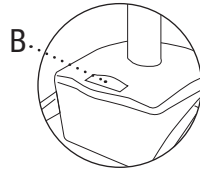
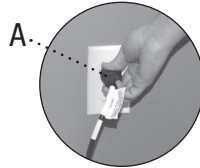
Please read all parts of this guide. When set-up is complete, do not discard guide.
Please file guide in secure place for future reference.

T: 1.800.MIDMARK | www.midmark.com | Version 5.0

1. Prepare for Cart Set-up

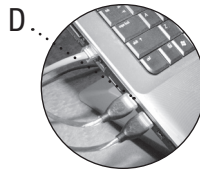
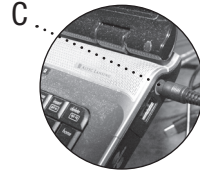
Plug-in system to AC outlet (cart will come out of “sleep mode”) (A). The charging indicator on the fuel gauge (B) will flash while charging and will turn off when the battery is fully charged. The average time for the battery to reach full load is 5-6 hours.

Note: Battery life is maximized when fully charged at least once a week.



2. Technology Component(s) Set-up

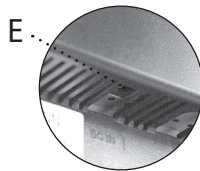
1. Remove internal battery from laptop! Doing so will ensure a maximum runtime* for you power system.
2. Connect power adapter cable into appropriate connection port (C) (usually found on the side panels of laptop).
3. Connect input cable into USB port of laptop (D) (usually found on the left side panel of laptop).



Monitor Setup - DC Monitor is Recommended (if Laptop Cart is being used, disregard this step)

1. Connect power adapter cable into appropriate connection port (E) (usually found either on the bottom or back panel of monitor).

* Runtimes are highly dependent on the power management settings on each technology component.

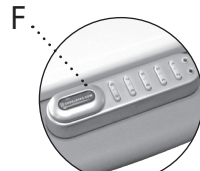


3. Electronic Keyless Lock System (optional)

To unlock: Enter code (2244), turn lever to unlocked position (F) (turning knob clockwise)

To Lock: Turn lever to closed position (G), and enter code to lock.

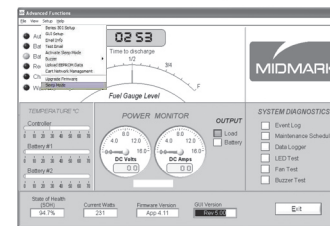
To change user code from factory code, enter #, user code, enter new user code, enter user code again for confirmation (for example #, 2244, 6688, 6688).



NOTE: When your DC Cart has not been used or has been inactive for over a 24 hour period, it is recommended that the unit be put into “Sleep” mode to insure battery life. Please follow these steps (once unit is in sleep mode, to awaken unit simply plug-in to AC outlet).

- Go to the Advanced Diagnostic Screen. Go to :Setup” in the menu bar. Scroll down to “Sleep Mode”, read prompt and click yes.

WARNING: If not deploying immediately, make sure the power system remains plugged in.



Diagnostic Screen

Tech Specs

- DC Powered - Series 301 Software (Rev. 5.0)
- Cart compatibility: DC Powered - series 301 software is compatible with all DC series carts.

Minimum PC Configuration

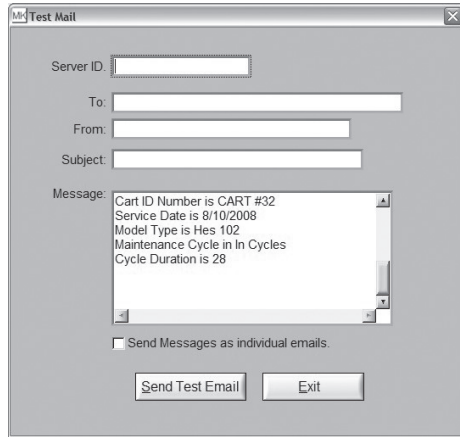
- Operating System: Windows 2000 + Service Pack 3

Recommended PC Configuration:

- Operating System: Windows XP + Service Pack 2
- System Memory: 80K
- Hard Disk (free space): 15MB
- Screen Resolution: High Resolution 1280+
- Port Availability: USB 2.0
- Not compatible with Windows Vista

8. Test Email

- Provides a testing capability for the user to evaluate the information provided.



9. Event Logging (not part of setup, but an integral part of the software program)

- Important: Battery carries a limited 12 month warranty (only if claims are submitted with Event Logs).
- Provides a sequence of events experienced by the power system. Events displayed are battery state of health, low battery, and shut down.

| | Date | Time | Function | Status | Charge | Remaining | Voltage | Current | R-Vol | R-Cur | Temp1 | Temp2 | Temp3 | | |
|----|----------|-------|----------|-----------|--------|-----------|---------|---------|-------|-------|-------|-------|-------|----|----|
| 3 | 5/2/2008 | 14:44 | C | On Batt | 0% | 9999 | 14.19 | 0.07 | 14.21 | 0 | 29 | 25 | 24 | | |
| 4 | 5/2/2008 | 14:44 | 4 | On AC | 100% | 9999 | 13.99 | 0.14 | 14.01 | 0.13 | 29 | 25 | 24 | | |
| 5 | 5/2/2008 | 14:44 | 18 | Full Batt | 0% | 0 | 14.39 | 0.14 | 14.4 | 0 | 29 | 25 | 24 | | |
| 6 | 5/2/2008 | 16:45 | E | On Batt | 100% | 9999 | 14.01 | 0.11 | 14.02 | 0 | 29 | 25 | 25 | | |
| 7 | 5/2/2008 | 16:45 | 19 | On AC | 100% | 9999 | 14.3 | 0.12 | 14.3 | 0.11 | 29 | 25 | 25 | | |
| 8 | 5/2/2008 | 16:45 | 24 | Full Batt | 0% | 0 | 14.38 | 0.14 | 14.4 | 0 | 29 | 25 | 25 | | |
| 9 | 5/2/2008 | 15:46 | 16 | On Batt | 100% | 9999 | 14.61 | 0.04 | 14.63 | 0 | 29 | 25 | 25 | | |
| 10 | 5/2/2008 | 15:46 | 29 | On AC | 100% | 9999 | 14.38 | 0.13 | 14.38 | 0.13 | 29 | 25 | 25 | | |
| 11 | 5/2/2008 | 15:46 | 34 | Full Batt | 0% | 0 | 14.41 | 0.14 | 14.42 | 0 | 29 | 25 | 25 | | |
| 12 | 5/2/2008 | 8:24 | 6 | On Batt | 100% | 9999 | 13.65 | 0.13 | 13.65 | 0 | 28 | 24 | 24 | | |
| 13 | 5/2/2008 | 8:48 | 42 | power-up | 99% | 9999 | 0 | 0 | 13.05 | 0 | 28 | 24 | 24 | | |
| 14 | 5/2/2008 | 8:48 | 45 | On AC | 0% | 0 | 13.05 | 0 | 13.05 | 0 | 28 | 24 | 24 | | |
| 15 | 5/2/2008 | 8:49 | 0 | Full Batt | 100% | 9999 | 0 | 0 | 14.31 | 0.14 | 14.41 | 0.64 | 28 | 24 | 24 |

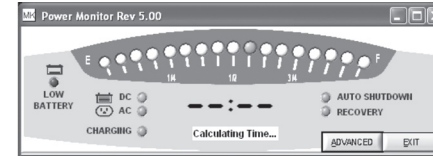
11. Your Initial Set-up is complete. Please allow batteries to fully charge (average time is 5-6 hours).

4. Software Setup

Load DC Live™ (Series 301) Software CD into laptop. Software will automatically install. If it does not automatically install, go to start menu of computer, select “my computer”, find software cd, and double-click cd. Select Setup Installer and go through setup instructions. When complete, reboot computer and reopen the DC Live™ (Series 301) software program.

Main Users Screen

Will appear once program in launched.



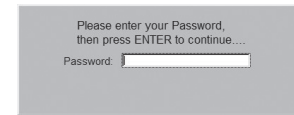
Main User's Screen

Diagnostics Screen

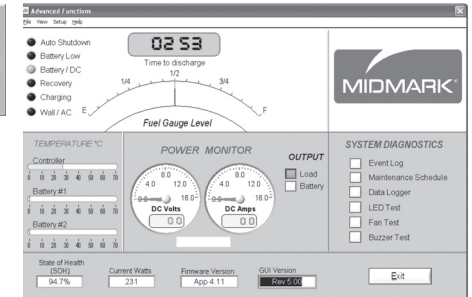
To access diagnostic screen, enter password (**SERIES 301**). The Diagnostic Screen will appear (to change password, go to item #6).

The diagnostic Interface Screen has a pull down menu item called “Setup” found in the upper margin. This must be selected to access the edit of the initial system parameters.

See following steps (pages 3-6) for setup options.



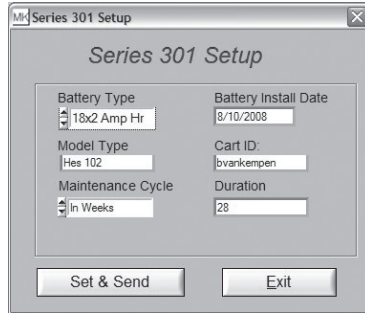
Password Screen



Diagnostic Screen

5. System Setup (not needed if evaluating cart)

Within the diagnostic screen, access the Setup menu item. Scroll down through the items and find Series 301 Setup. Once screen appears proceed to enter appropriate configuration/system settings.



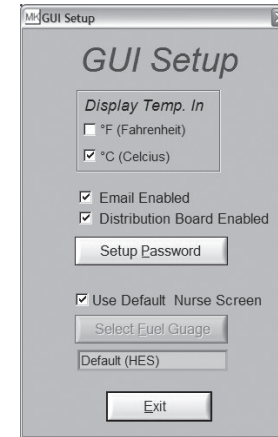
Setup Screen

The following are brief descriptions of each field:

- Set Battery; Select the proper battery type that is installed
- Service Date; Automatically updated when required fields are completed
- Model Type; Battery Model Type
- Cart ID; This field is user defined
- Maintenance Cycle; Two cycle types available.
 1. Number of weeks
 2. Amp Hours: Number of amp hours from initialization
- Duration; Threshold value of the chosen maintenance cycle
- Set & Send; Send information to the device or save it to a file.
- Exit; Close screen and return to diagnostic screen

6. GUI (Graphic User Interface) Setup

- Change temperature display
- Change default Diagnostic Screen Access password



7. Email Setup

- IP Address of the mail server of the network which this device is within.
- Sender Email is the address assigned by the network administrator
- Recipient Email is the address of the location that the Email alerts will be sent to
- Subject is a user defined field
- Message Options Screen

